

- LEGEND**
- PROPERTY BOUNDARY
 - EX. CONTOUR
 - PROP. CONTOUR
 - EX. TREELINE
 - LOD
 - TREE PROTECTION FENCE
 - NOISE CONTOUR (dBA Ldn)
 - CLEARING AREA
 - SPECIMEN TREE WITH LIMITS OF CRITICAL ROOT ZONE

M.N.C.P.P.C. APPROVALS

PROJECT NAME: EYA / ARTS DISTRICT HYATTSVILLE EAST VILLAGE
PROJECT NUMBER: DSP-06029 & SP-070003

Approval of	Approval Date	Approval Signature	Approval Title
01	1/4/10	25	1/4/10

M.N.C.P.P.C. APPROVALS

PROJECT NAME: EYA / ARTS DISTRICT HYATTSVILLE EAST VILLAGE
PROJECT NUMBER: DSP-06029 & SP-070003

Approval of	Approval Date	Approval Signature	Approval Title
01	1/4/10	25	1/4/10

M-NCPCC
Prince George's County Planning Department
Environmental Planning Section

APPROVAL
TREE CONSERVATION PLAN
TCP II / 063 / 07

Approval of	Approval Date
01	1/24/08

DSP-06029

DEVELOPER:
LH EAST ASSOCIATES, LIMITED PARTNERSHIP
C/O EYA Inc.
by: LH East Development, Inc.
A Maryland Corporation General Partner
4800 Hampden Lane, Suite 300
Bethesda, Maryland 20814

APPROVED PLAN

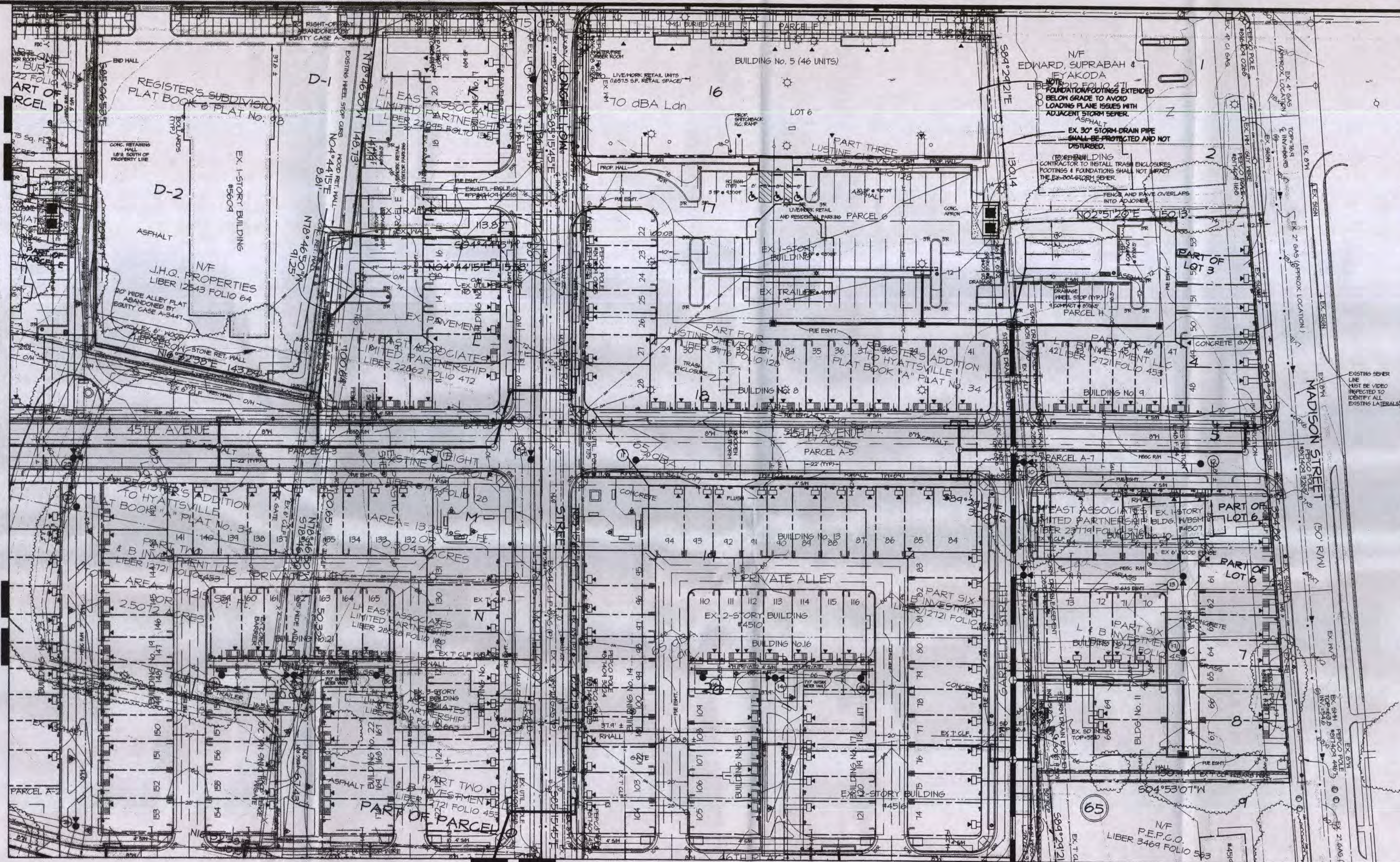
TREE CONSERVATION PLAN - TYPE II
EYA / ARTS DISTRICT
HYATTSVILLE, EAST VILLAGE
HYATTSVILLE DISTRICT NO. 16 &
RIVERDALE DISTRICT NO. 19
PRINCE GEORGE'S COUNTY, MARYLAND

T-2: SHEET 2 OF 5
GRAPHIC SCALE 1" = 30'

12-3-09	1/23/09	Revised to reflect changes to DSP-06029-01, SP-070003-01 & SP-070003-02	MP
	12/10/07	Revised per Resolutions No. 07-195 and 07-196	ST
	9/18/07	Revised per MNCPPC EPS memo dated 8/1/07	KM
DATE	DESCRIPTION	BY	
12-3-09	REVISIONS		
DATE	DESCRIPTION	BY	
12-3-09	REVISIONS		
DATE	DESCRIPTION	BY	
12-3-09	REVISIONS		

1081 WOODBURN ROAD, SUITE 200
METHUEN, MASSACHUSETTS 01844
BEN DYER ASSOCIATES, INC.
Engineers / Surveyors / Planners
TELEPHONE (800) 480-0000
COPYRIGHT © 2007 BEN DYER ASSOCIATES, INC.
DESIGNED BY: BEN DYER ASSOCIATES, INC.
DRAWN BY: BEN DYER ASSOCIATES, INC.
SCALE: 1" = 30'
DATE: MARCH 2007
J-52008
54,004-Y

MATCH LINE "A" (SEE SHEET 2 OF 5, BDAI DWG. NO. 54.004-Y)



- LEGEND**
- PROPERTY BOUNDARY
 - EX. CONTOUR
 - PROP. CONTOUR
 - EX. TREELINE
 - LOD
 - TREE PROTECTION FENCE
 - NOISE CONTOUR (dBA Ldn)
 - CLEARING AREA
 - SPECIMEN TREE WITH LIMITS OF CRITICAL ROOT ZONE

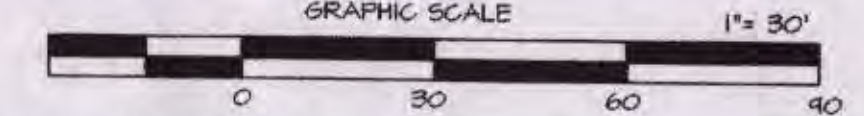
ESP 06029 1

MATCH LINE "B" (SEE SHEET 4 OF 5, BDAI DWG. NO. 54.011-Y)

TREE CONSERVATION PLAN - TYPE II
EYA / ARTS DISTRICT
HYATTSVILLE, EAST VILLAGE

HYATTSVILLE DISTRICT NO. 16 &
RIVERDALE DISTRICT NO. 19
PRINCE GEORGE'S COUNTY, MARYLAND

T-3: SHEET 3 OF 5



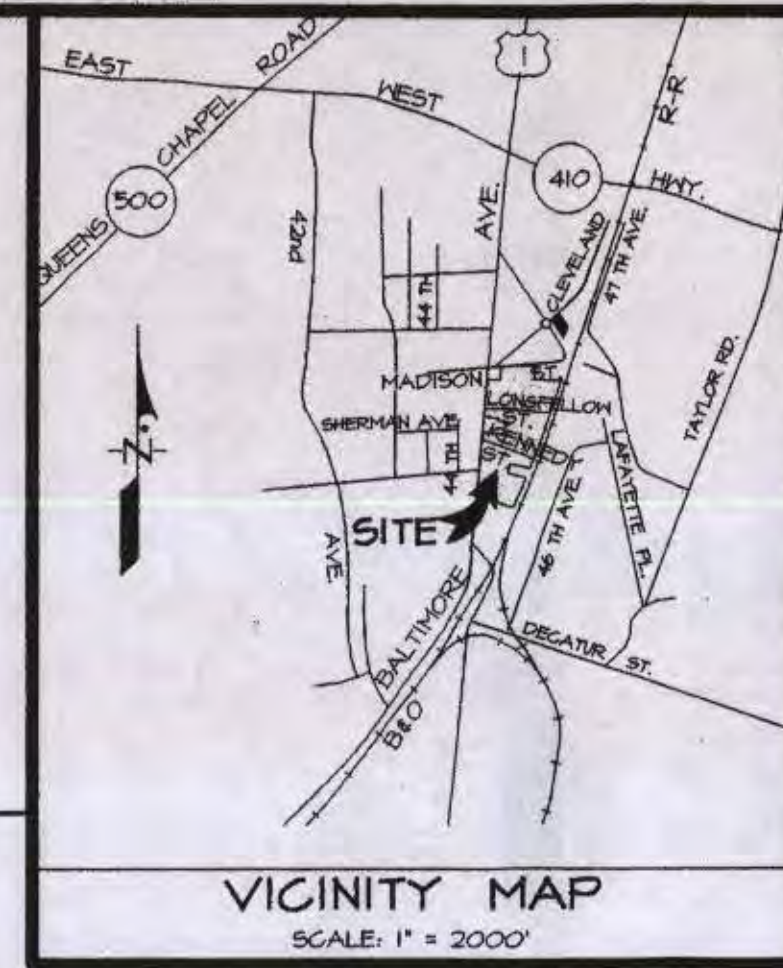
M.N.C.P.P.C. APPROVALS			
PROJECT NAME: EYA / ARTS DISTRICT HYATTSVILLE EAST VILLAGE			
PROJECT NUMBER: DSP-06029 & SP-070003			
For Conditions of Approval see Site Plan Cover Sheet or Approval Sheet. The Restrictions Listed Below Apply to This Sheet.			
Approval of Revision #	Approval Date	Reviewer's Signature	Certification Date
01	11.9.07	R6	1.10.07
02	1.4.08	R6	1.16.08

M.N.C.P.P.C. APPROVALS			
PROJECT NAME: EYA / ARTS DISTRICT HYATTSVILLE EAST VILLAGE			
PROJECT NUMBER: SP-060001			
For Conditions of Approval see Site Plan Cover Sheet or Approval Sheet. The Restrictions Listed Below Apply to This Sheet.			
Approval of Revision #	Approval Date	Reviewer's Signature	Certification Date
01	11.9.07	R6	1.10.07

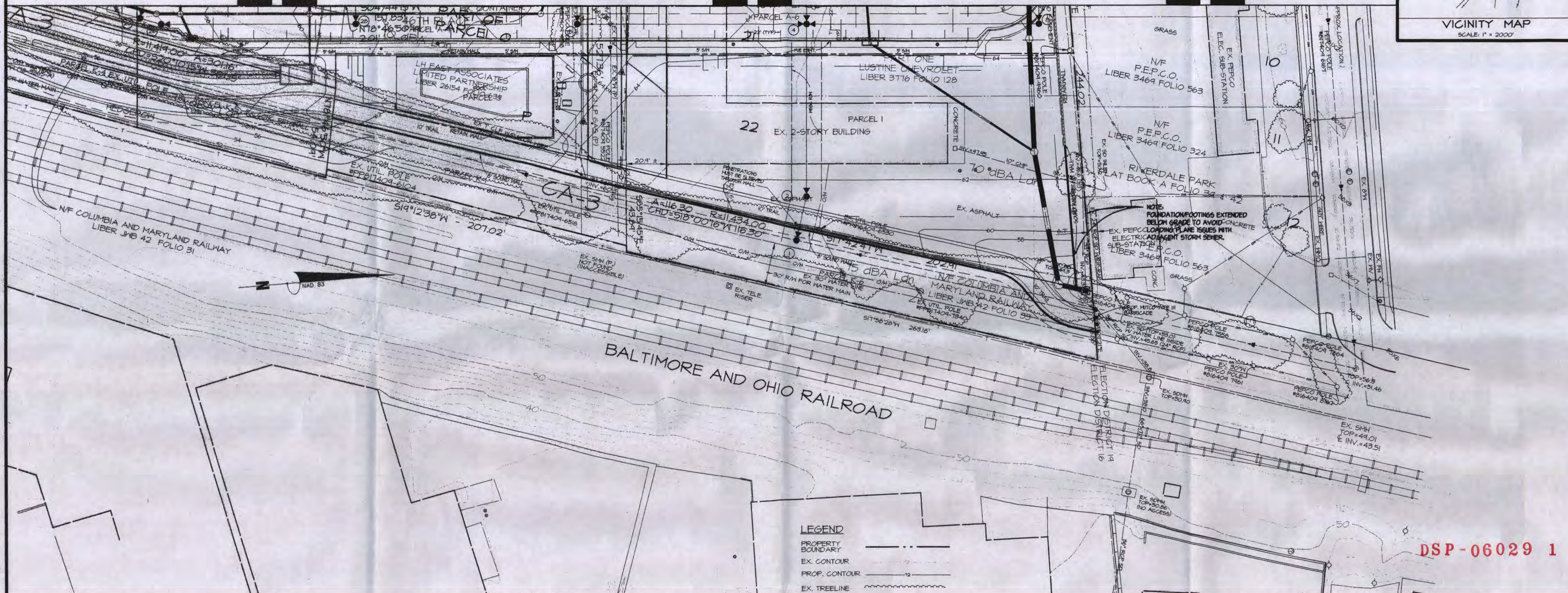
M-NCPCC
Prince George's County Planning Department
Environmental Planning Section
APPROVAL
TREE CONSERVATION PLAN
TCP II / 063 / 07
Approved by: *K. Houlton* DATE: 12/30/07

DEVELOPER
LH EAST ASSOCIATES, LIMITED PARTNERSHIP
c/o EYA Inc.
by LH East Development, Inc.
A Maryland Corporation General Partner
4800 Hampden Lane, Suite 300
Bethesda, Maryland 20814

12-3-09 DATE <i>M. Lark</i>		1721 WOODMOORE ROAD, SUITE 200 MITCHELLVILLE, MARYLAND 20721 BEN DYER ASSOCIATES, INC. Engineers / Surveyors / Planners TELEPHONE (301) 450-2000
1/23/09	Revised to reflect changes to DSP-06029-01.	MP
12/10/07	Revised per Resolutions No. 07-195 and 07-196.	ST
9/18/07	Revised per MNCPPC EPS memo dated 8/1/07.	KM
DATE	DESCRIPTION	BY
REVISIONS		
SCALE	1"=30'	DWG. NO. J-52008



MATCH LINE "B" (SEE SHEET 3 OF 5, BDAI DWG. NO. 54.010-Y)



- LEGEND**
- PROPERTY BOUNDARY
 - EX. CONTOUR
 - PROP. CONTOUR
 - EX. TREELINE
 - L&D
 - TREE PROTECTION FENCE
 - NOISE CONTOUR (dBA Ldn)
 - CLEARING AREA
 - SPECIMEN TREE WITH LIMITS OF CRITICAL ROOT ZONE

TREE CONSERVATION PLAN - TYPE II EYA / ARTS DISTRICT HYATTSVILLE, EAST VILLAGE

HYATTSVILLE DISTRICT No. 16 &
RIVERDALE DISTRICT No. 19
PRINCE GEORGE'S COUNTY, MARYLAND

APPROVED
PLAN

T-4: SHEET 4 OF 5
GRAPHIC SCALE 1" = 30'

M.N.C.P.P.C. APPROVALS

PROJECT NAME: EYA / ARTS DISTRICT HYATTSVILLE EAST VILLAGE
PROJECT NUMBER: DSP-06029 & SP-070003

Approval #	Approval Date	Approval Signature	Approval Title
01	11-9-07	[Signature]	Chairman
02	1-4-08	[Signature]	Member

M.N.C.P.P.C. APPROVALS

PROJECT NAME: EYA / ARTS DISTRICT HYATTSVILLE EAST VILLAGE
PROJECT NUMBER: SP-060001

Approval #	Approval Date	Approval Signature	Approval Title
01	11-9-07	[Signature]	Chairman
02	1-4-08	[Signature]	Member

M-NCPPC
Prince George's County Planning Department
Environmental Planning Section

APPROVAL
TREE CONSERVATION PLAN
TCP II / 063 / 07

Approval #	Approval Date	Approval Signature	Approval Title
01	1-24-08	[Signature]	Director
02			
03			
04			
05			
06			

DEVELOPER
LH EAST ASSOCIATES, LIMITED PARTNERSHIP
C/O EYA Inc.
by: LH East Development, Inc.
A Maryland Corporation General Partner
4800 Hampden Lane, Suite 300
Bethesda, Maryland 20814

DATE	DESCRIPTION	BY	DATE
12-3-09	Revised to reflect changes to DSP-06029-01, SP-070003-01 & SP-070003-02	MP	
12/10/07	Revised per Resolutions No. 07-193 and 07-196	ST	
9/18/07	Revised per MNCPPC EPS memo dated 8/1/07	KH	

1751 WOODMORE ROAD, SUITE 200
MITCHELLVILLE, MARYLAND 20721
BEN DYER ASSOCIATES, INC.
Engineers / Surveyors / Planners
TEL: 410-486-4500 FAX: 410-486-4501
COPYRIGHT © 2007 BEN DYER ASSOCIATES, INC.
J-52008
DATE MARCH, 2007
54.011-Y