

SANDY HILL PARK

TCP II

BOWIE (14th) ELECTION DISTRICT PRINCE GEORGE'S COUNTY, MARYLAND

TCP-2 LEGEND

---	BOUNDARY LINE
---	PROPERTY LINE
---	EASEMENT LINE
---	EXISTING TREE LINE
---	PROPOSED TREE LINE
---	EXISTING MINOR CONTOUR
---	EXISTING MAJOR CONTOUR
---	PROPOSED MINOR CONTOUR
---	PROPOSED MAJOR CONTOUR
---	TREE PROTECTION FENCE - TEMPORARY
---	TREE PROTECTION FENCE - PERMANENT
---	ROOT PRUNING
---	LIMIT OF DISTURBANCE
---	REGULATED STREAMS
---	PRIMARY MANAGEMENT AREA
---	WETLAND
---	WETLAND BUFFER
---	100 YEAR FLOODPLAIN
---	FLOODPLAIN BUFFER (25 FOOT)

1	SPECIMEN TREE
2	SPECIMEN TREE REMOVED
3	WOODLAND CLEARED
4	AFFORESTATION/REFORESTATION
5	WOODLAND CONSERVATION SIGN

Note:

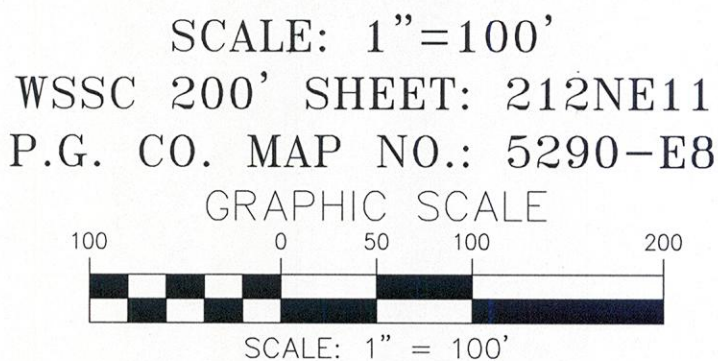
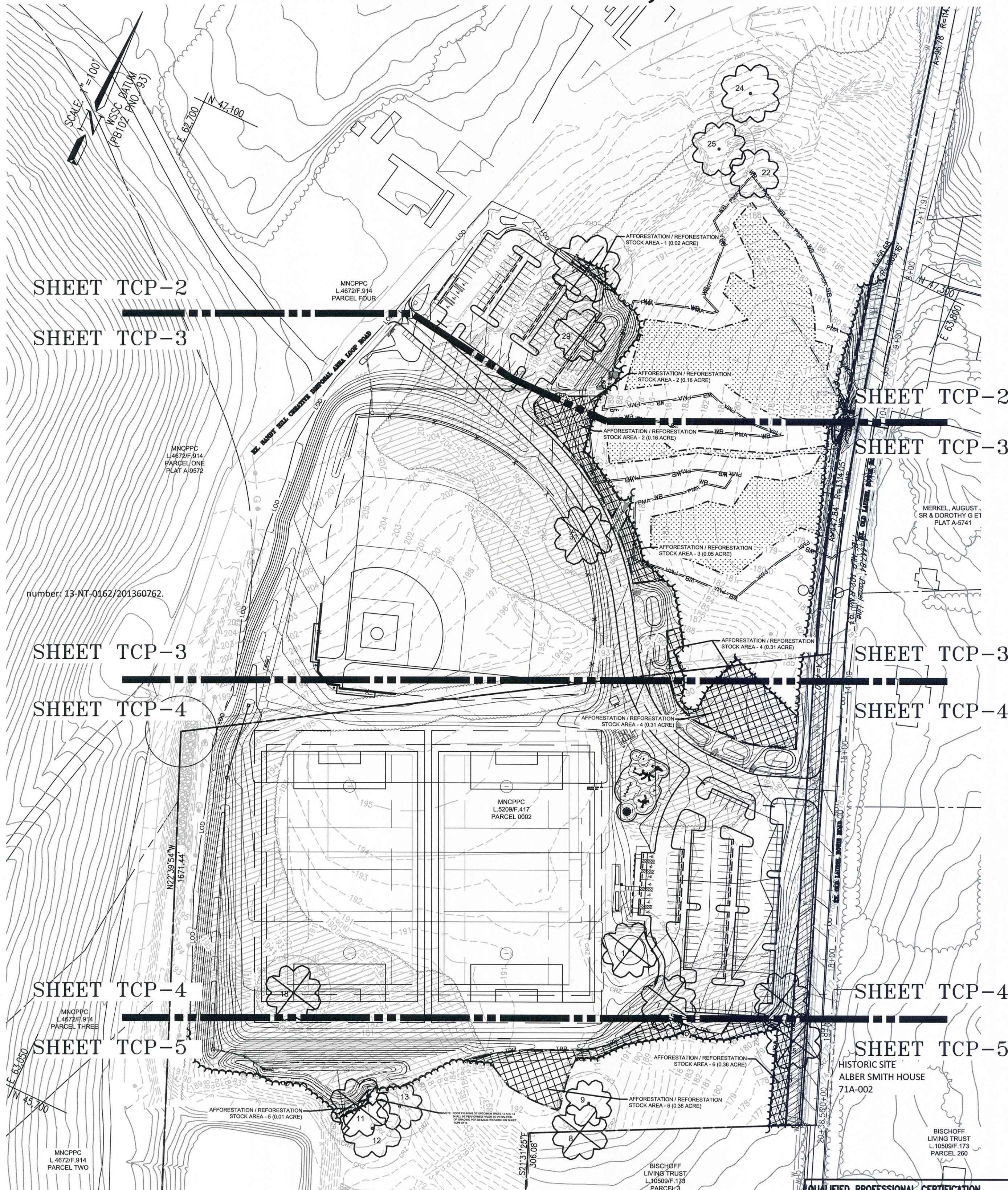
- 7.3.3 Linear and Government Projects
TCPs for linear projects are not required to include the entirety of the affected lots or parcels and can be prepared showing the limit of disturbance and a minimum of 100 feet outside the limit of disturbance. The project has received a Letter of Authorization from the State of Maryland Department of the Environment (MDE). Authorization Number 13-NT-0162/201360762
- One acre replacement for each acre disturbed is required.
- R-O-S Zones are exempt from the Tree Canopy Requirements.
- The Parks program requirements and grading standards for ball fields made impacts to wetlands and wetland buffers unavoidable (see attached Letter of Authorization from the State of Maryland Department of the Environment Water Management Administration).
- This project has received authorization to impact wetlands as shown on the plans. Authorization

Woodland Conservation Worksheet for Governmental and Linear Projects in Prince George's County			
SECTION 1-Establishing Site Information			
1 Property Description or Name:	Sandy Hill Park		
2 Project Location:	9308 Old Laurel Bowie Road, Bowie, MD 20720		
3 TCP2 Number:	TCP2-081-93	Rev. No.:	
4 NRI Number:	NRI 054-12	Rev. No.:	
5 Zone:		R-O-S	
6 Gross Tract:	85.59 Acres		
7 Project Area/Limits:	32.21 Acres		
SECTION 2-Determining Requirements			
8 Existing Woodland in Project Limits = WCT	13.14	or	40.96%
9 Woodland Cleared in Project Limits	7.40		
10 Total area of woodland cleared (subject to 1:1 replacement)	7.40		
11 Off-Site Woodland Conservation Provided (afforestation)	0.00		
12 Off-Site Woodland Conservation Provided (preservation)	0.00		
13 Woodland Conservation Requirement	13.14 Acres		
SECTION 3-Meeting the Requirements			
14 Woodland Preserved	5.74		
15 Afforestation / Reforestation	0.91		
16 Natural Regeneration	0.00		
17 Landscape Credit	0.00		
18 Specimen / Historic Tree Credit (CZR Area * 2.0)	0.00		
19 Forest Enhancement Credit (Area * 0.25)	0.00		
20 Street Tree Credit (Existing or 10-year canopy coverage)	0.00		
21 Prior Credit for Off-site Woodland Conservation	0.00		
22 Current Credit for Off-site Woodland Conservation	6.49		
23 Off-site Woodland Conservation provided (afforestation)	0.00		
24 Off-site Woodland Conservation provided (preservation)	0.00		
25 Area Approved for Fee-in-Lieu / PFA	0.00	or	\$0.00
26 Area Approved for Fee-in-Lieu / Non-PFA	0.00	or	\$0.00
27 Total Woodland Conservation Provided	13.14 Acres		
28 Prepared by: Kevin Garvey on June 10, 2016 and checked and revised by Eric J. Sturm, RLA on January 17, 2018.	Date: January 18, 2018.		

- Off-site Woodland Conservation:
- Off-site woodland conservation, 6.49 acres, will be provided at a Prince Georges County Woodland Conservation Bank prior to release of permits for grading.
 - This plan is approved in accordance with the following variance (s) from the strict requirements of subtitle 25 approved by the planning director on September 15, 2016:
A. The removal of eight Specimen Trees (section 25-122(B)(1)(6)): ST-1, 3, 5, 11, 18, 28, 29 and 31.

MISS UTILITY

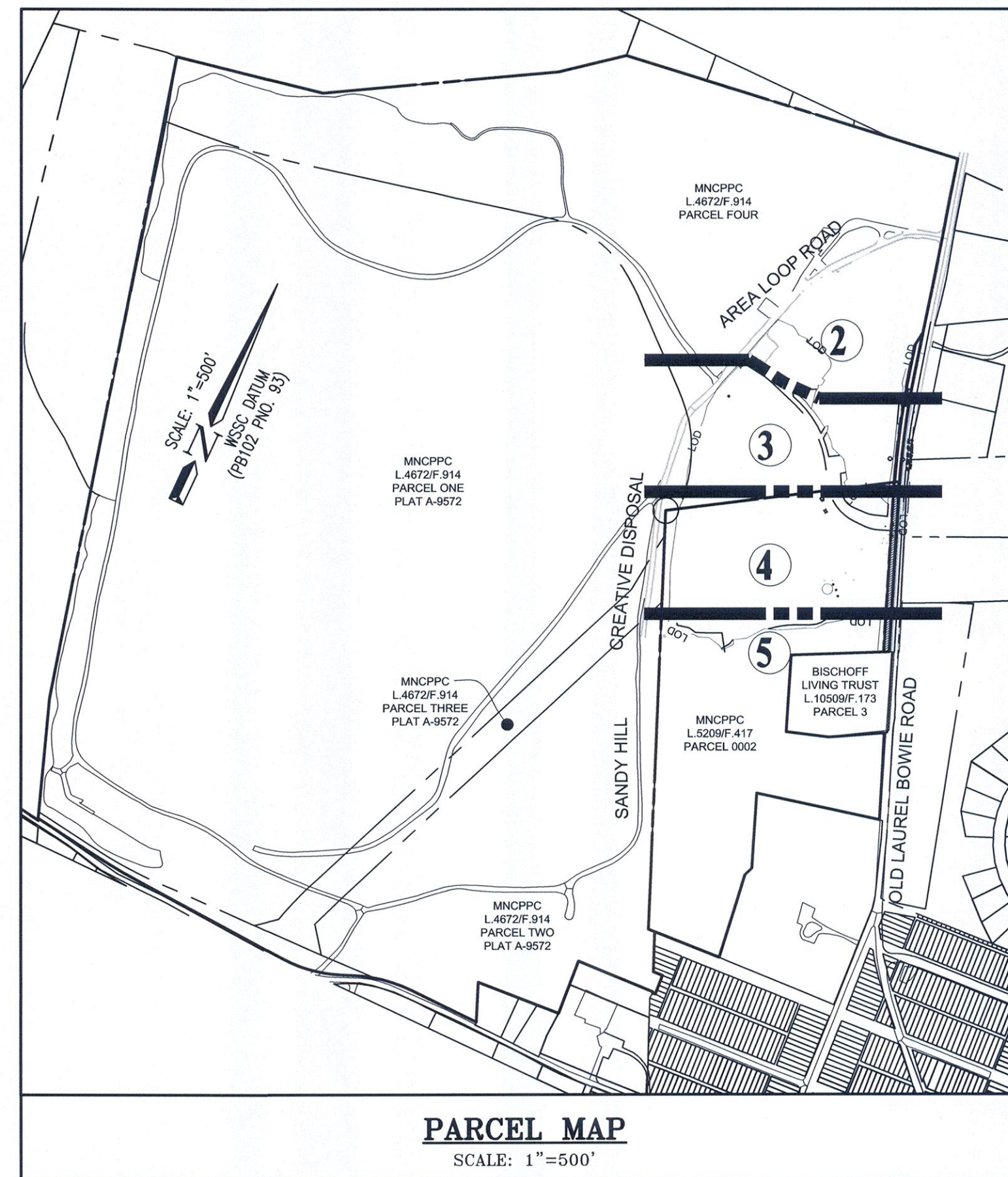
Call "Miss Utility" at 1-800-257-7777, 72 hours prior to the start of work.
The excavator must notify all public utility companies with underground facilities in the area of proposed excavation and have those facilities located by the utility companies prior to commencing excavation.



QUALIFIED PROFESSIONAL CERTIFICATION

TO THE BEST OF MY ABILITY AND KNOWLEDGE THIS PLAN COMPLIES WITH THE CURRENT REQUIREMENTS OF SUBTITLE 25 AND THE WOODLAND AND WILDLIFE CONSERVATION TECHNICAL MANUAL.

SIGNED: DATE: 1-18-18
CPJ & ASSOCIATES, INC. 1751 ELTON ROAD, SUITE 300, SILVER SPRING, MD 20903
PHONE: 301-434-7000 EMAIL: ESTURM@CPJ.ACOM



SHEET INDEX - TCP II		
SHEET NUMBER	DRAWING NUMBER	SHEET TITLE
11	TCP-1	TREE CONSERVATION OVERALL PLAN VIEW
12	TCP-2	TREE CONSERVATION PLAN VIEW
13	TCP-3	TREE CONSERVATION PLAN VIEW
14	TCP-4	TREE CONSERVATION PLAN VIEW
15	TCP-5	TREE CONSERVATION PLAN VIEW
16	TCP-6	TREE CONSERVATION NOTES AND DETAILS
17	TCP-7	TREE CONSERVATION NOTES AND DETAILS
18	TCP-8	TREE CONSERVATION NOTES AND DETAILS

Property Owners Awareness Certificate

I/ We _____ hereby acknowledge that we are aware of this Type 2 Tree Conservation Plan (TCP2) and that we understand the requirements as set forth in this TCP2.

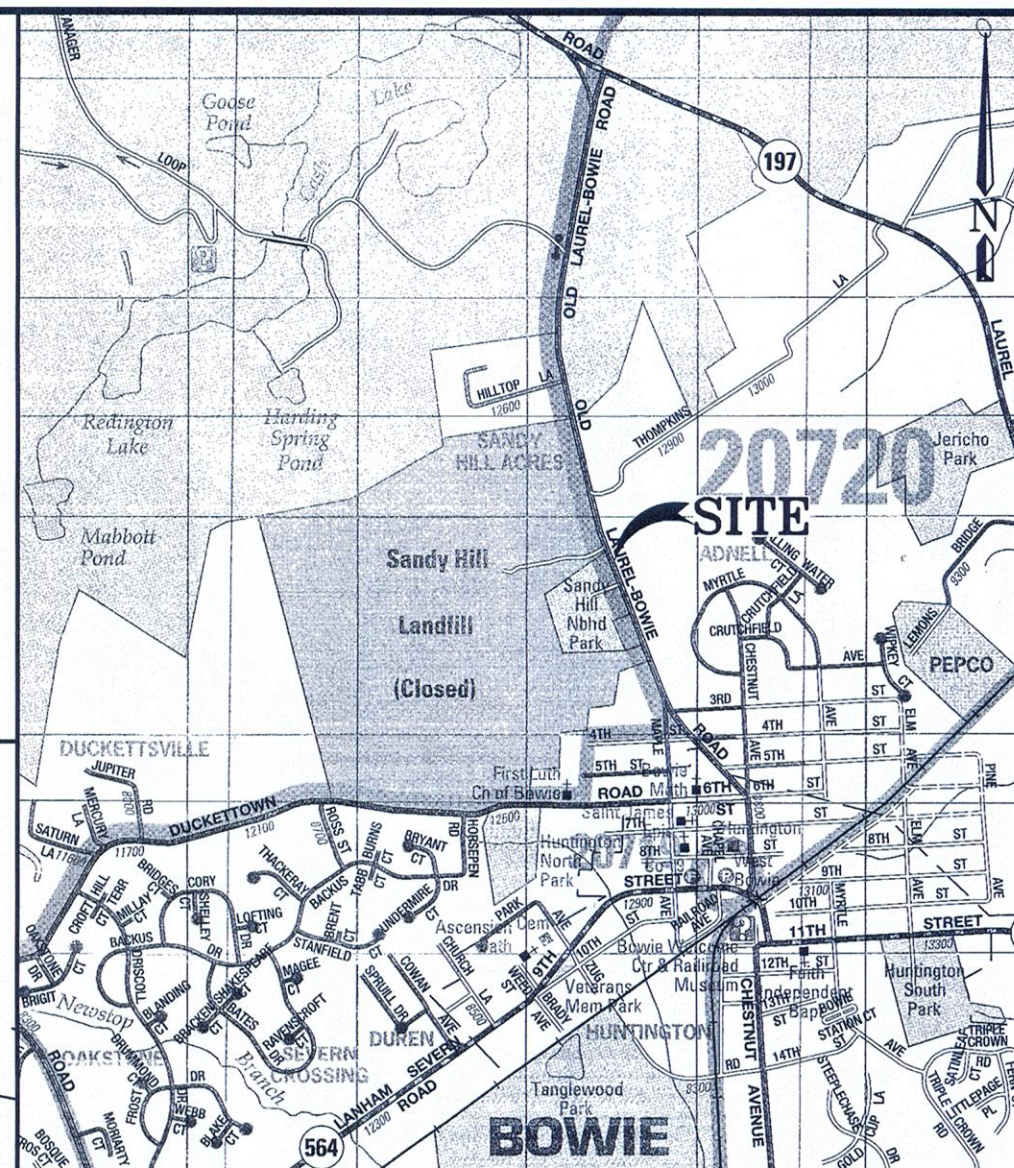
Owner or Owners Representative _____ Date _____

I/ We _____ hereby acknowledge that we are aware of this Type 2 Tree Conservation Plan (TCP2) and that we understand the requirements as set forth in this TCP2.

Contract Purchaser _____ Date _____

The Maryland-National Capital Park and Planning Commission

Prince George's County Department
of Parks and Recreation
6600 Kenilworth Avenue
Rivendale, Maryland 20737
(301) 699-2441
Contact: Francis Kang



VICINITY MAP

SCALE: 1"=2.000'

COPYRIGHT AND THE MAP PROFILE
PERMITTED USE NUMBER 2100513
AND MONTICOMERY CO. MAP PAGE # 4820-86

STATE OF MARYLAND DEPARTMENT OF THE ENVIRONMENT WATER MANAGEMENT ADMINISTRATION LETTER OF AUTHORIZATION

AUTHORIZATION NUMBER: 13-NT-0162/201360762

EFFECTIVE DATE: March 11, 2014

EXPIRATION DATE: March 11, 2017

AUTHORIZED PERSON: Maryland National Capital Parks and Planning
Commission
6600 Kenilworth Ave.
Rivendale, MD 20737
Attn: Francis Kang

IN ACCORDANCE WITH ENVIRONMENTAL ARTICLE (5-502(a) AND (5-506(b)), ANNOTATED CODE OF MARYLAND (2007 REPLENISHMENT VOLUME), COMAR 26.17.04 AND 26.23.01, AND 26.02.02 AND THE ATTACHED CONDITIONS OF AUTHORIZATION, Maryland National Capital Parks and Planning Commission (AUTHORITY) IS HEREBY AUTHORIZED BY THE WATER MANAGEMENT ADMINISTRATION (ADMINISTRATION) TO CONDUCT A REGULATED ACTIVITY IN A NATURAL WETLAND, BUFFER, OR EXPANDED BUFFER, AND/OR TO CHANGE THE COARSE, CURRENT OR CROSS SECTION OF WATERS OF THE STATE, IN ACCORDANCE WITH THE ATTACHED PLANS APPROVED BY THE ADMINISTRATION ON March 11, 2014 APPROVED PLANS AND PREPARED BY Charles P. Johnson and Associates, Inc. AND INCORPORATED HEREIN, AS DESCRIBED BELOW:

Regravel activities associated with improvements to an existing outdoor recreational facility called Sandy Hill Park, which includes regrading for new athletic fields, tennis parking, and improved access to greenways. The project will permanently impact approximately 2,417 square feet of forested wetland, wetlands, 4,089 square feet of wetland, wetlands buffers, 72 linear feet (217 square feet of riparian wetland), and 151 square feet within the 100-year floodplain. In addition, the project will temporarily impact 632 square feet of wetland, wetlands buffers, 333 square feet of wetland, wetlands buffers, and 2 linear feet (112 square feet) within a 100-year floodplain (Potomac River). The site is located on Old Laurel-Bowie Road, which is north of Duckettville Road and west of Thompsons Lane in Bowie, Prince George's County, Maryland.

MD Grid Coordinates: 1888594 N, 4188414 E

William Seiger
William Seiger, Chief
Waterways Construction Division

Attachments: Category A, Activity B(1)
Conditions of Authorization
MDESP-4 Conditions
Tree Management Practices

cc: Eric Sturm, Charles P. Johnson and Associates, Inc.
MDE WMA Compliance Program w/fee
U.S. Army Corps of Engineers Southern Region

Prince George's County Planning Department, M-NCPPC

Environmental Planning Section TYPE 2 TREE CONSERVATION PLAN APPROVAL TCP II - 081-93

Approved by	Date	DRD #	Reason for Revision
00 JPM	10/14/1993		
01 JPM	03/07/1996		
02 Kim Finch	4/16/2018		
03			
04			
05			
06			
07			
08			

UPDATES/REVISIONS :

TCP II TREE CONSERVATION OVERALL PLAN VIEW

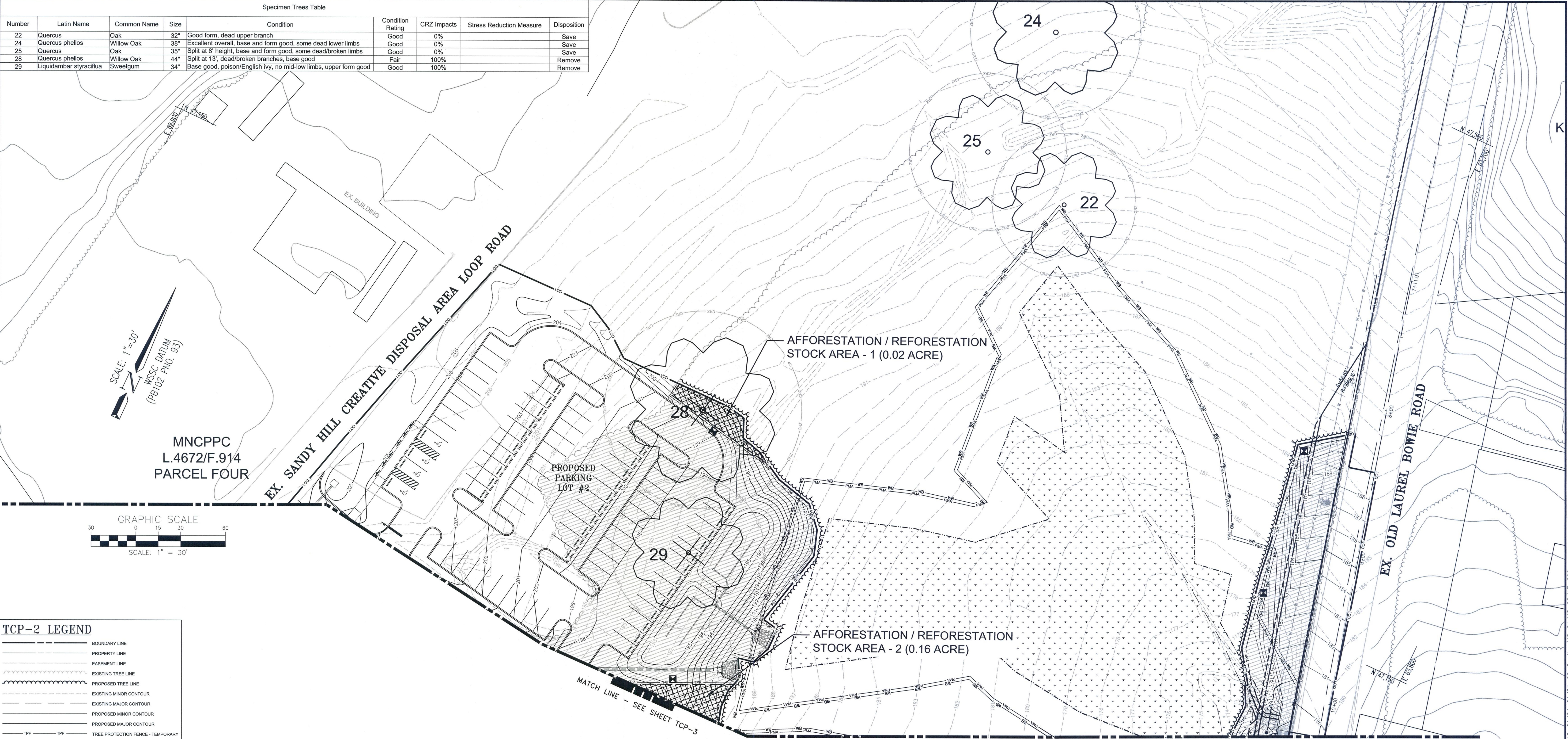
SANDY HILL PARK BOWIE (14th) ELECTION DISTRICT PRINCE GEORGE'S COUNTY, MARYLAND

CPJ Charles P. Johnson & Associates, Inc.
Civil and Environmental Engineers • Planners • Landscape Architects • Surveyors
1751 Elton Rd., Ste. 300 Silver Spring, MD 20903 301-434-7000 Fax: 301-434-9394
www.cpj.com • Silver Spring, MD • Gaithersburg, MD • Annapolis, MD • College Park, MD • Frederick, MD • Fairfax, VA

CLIENT: MNCPPC DEPARTMENT OF PARKS AND RECREATION 6600 KENILWORTH AVENUE RIVERDALE, MARYLAND 20737 TELEPHONE: 301-699-2441 CONTACT: FRANCIS KANG		TAX MAP/WSSC N/A	SITE PLAN NO. N/A
DESIGN KTG, EJS	SHEET 11	OF 103	
DRAFT ADG	TCP-1	TCP-8	
DATE FEB. 2017	FILE NO.:	41-242-222	
SCALE AS-SHOWN			

COPYRIGHT © LATEST DATE HERON CHARLES P. JOHNSON & ASSOCIATES, INC. ALL RIGHTS RESERVED. UNAUTHORIZED USE OR REPRODUCTION IS PROHIBITED.

Specimen Trees Table								
Number	Latin Name	Common Name	Size	Condition	Condition Rating	CRZ Impacts	Stress Reduction Measure	Disposition
22	Quercus	Oak	32"	Good form, dead upper branch	Good	0%		Save
24	Quercus phellos	Willow Oak	38"	Excellent overall, base and form good, some dead lower limbs	Good	0%		Save
25	Quercus	Oak	35"	Split at 8' height, base and form good, some dead/broken limbs	Good	0%		Save
28	Quercus phellos	Willow Oak	44"	Split at 13', dead/broken branches, base good	Fair	100%		Remove
29	Liquidambar styraciflua	Sweetgum	34"	Base good, poison/English Ivy, no mid-low limbs, upper form good	Good	100%		Remove



TCP-2 LEGEND

---	BOUNDARY LINE
---	PROPERTY LINE
---	EASEMENT LINE
---	EXISTING TREE LINE
---	PROPOSED TREE LINE
---	EXISTING MINOR CONTOUR
---	EXISTING MAJOR CONTOUR
---	PROPOSED MINOR CONTOUR
---	PROPOSED MAJOR CONTOUR
---	TREE PROTECTION FENCE - TEMPORARY
---	TREE PROTECTION FENCE - PERMANENT
---	ROOT PRUNING
---	LIMIT OF DISTURBANCE
---	REGULATED STREAMS
---	PRIMARY MANAGEMENT AREA
---	WETLAND
---	WETLAND BUFFER
---	100 YEAR FLOODPLAIN
---	FLOODPLAIN BUFFER (25 FOOT)
---	SPECIMEN TREE
---	SPECIMEN TREE REMOVED
---	WOODLAND CLEARED
---	AFFORESTATION/REFORESTATION
---	WOODLAND CONSERVATION SIGN

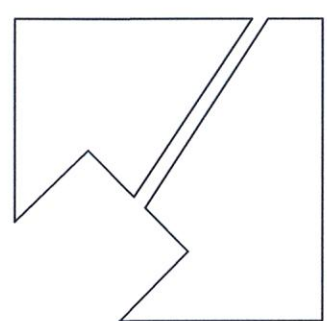
MISS UTILITY
Call "Miss Utility" at 1-800-257-7777, 72 hours prior to the start of work.
The excavator must notify all public utility companies with underground facilities in the area of proposed excavation and have those facilities located by the utility companies prior to commencing excavation.

WOODLAND CONSERVATION SUMMARY TABLE												
SHEET	GROSS PROJECT AREA	100 YR FLOODPLAIN	NET PROJECT AREA	EXISTING WOODLAND	EXISTING WOODLAND IN FLOODPLAIN	WOODLAND CLEARED NET PROJECT AREA	WOODLAND CLEARED FLOODPLAIN	WOODLAND CLEARED OFF SITE	WOODLAND PRESERVATION AREA	WOODLAND REFORESTATION AREA	WOODLAND RETAINED NOT CREDITED	WOODLAND RETAINED ASSUMED CLEARED
TCP-2	5.05 ACRES	0.00 ACRES		2.19 ACRES	0.00 ACRES	0.66 ACRES	0.00 ACRES	0.10 ACRES	1.57 ACRES	0.04 ACRES	0.00 ACRES	0.00 ACRES
TCP-3	9.97 ACRES	0.00 ACRES		4.14 ACRES	0.00 ACRES	2.28 ACRES	0.00 ACRES	0.01 ACRES	2.10 ACRES	0.24 ACRES	0.00 ACRES	0.00 ACRES
TCP-4	12.36 ACRES	0.00 ACRES		3.38 ACRES	0.00 ACRES	3.32 ACRES	0.00 ACRES	0.03 ACRES	0.32 ACRES	0.26 ACRES	0.00 ACRES	0.00 ACRES
TCP-5	4.83 ACRES	0.00 ACRES		3.43 ACRES	0.00 ACRES	1.14 ACRES	0.00 ACRES	0.04 ACRES	2.66 ACRES	0.37 ACRES	0.00 ACRES	0.00 ACRES
TCP TOTAL	32.21 ACRES	0.00 ACRES		13.14 ACRES	0.00 ACRES	7.40 ACRES	0.00 ACRES	0.18 ACRES	6.65 ACRES	0.91 ACRES	0.00 ACRES	0.00 ACRES

Prince George's County Planning Department, M-NCPPC Environmental Planning Section TYPE 2 TREE CONSERVATION PLAN APPROVAL TCPH - 081-93			
Approved by	Date	DRD #	Reason for Revision
00 JPM	10/14/1993		
01 JPM	03/07/1996		
02 Kim Finch	4/16/2018		
03			
04			
05			
06			
07			
08			

QUALIFIED PROFESSIONAL CERTIFICATION
TO THE BEST OF MY ABILITY AND KNOWLEDGE THIS PLAN COMPLIES WITH THE CURRENT REQUIREMENTS OF SUBTITLE 25 AND THE WOODLAND AND WILDLIFE CONSERVATION TECHNICAL MANUAL.

SIGNED: [Signature] DATE: 1-18-18
CPJ & ASSOCIATES, INC. ARCHITECT/ENGINEER
1751 ELTON ROAD, SUITE 300, SILVER SPRING, MD 20903
PHONE: 301-434-7000 EMAIL: ESTURM@CPJA.COM



The Maryland-National Capital
Park and Planning Commission
Prince George's County Department
of Parks and Recreation
6600 Kenilworth Avenue
Riverdale, Maryland 20737
(301) 699-2441
Contact: Francis Kang

UPDATES/REVISIONS :

TCP II
TREE CONSERVATION PLAN VIEW

SANDY HILL PARK
BOWIE (14th) ELECTION DISTRICT
PRINCE GEORGE'S COUNTY, MARYLAND

CPJ Charles P. Johnson & Associates, Inc.
Civil and Environmental Engineers • Planners • Landscape Architects • Surveyors
1751 Elton Rd., Ste. 300 Silver Spring, MD 20903 301-434-7000 Fax: 301-434-9394
www.cpja.com • Silver Spring, MD • Gaithersburg, MD • Annapolis, MD • College Park, MD • Frederick, MD • Fairfax, VA

CLIENT: MNCPPC DEPARTMENT OF PARKS AND RECREATION
6600 KENILWORTH AVENUE
RIVERDALE, MARYLAND 20737
TELEPHONE: (301) 699-2441
CONTACT: FRANCIS KANG

TAX-MAP/WSSC: N/A

SITE PLAN NO.: N/A

DESIGN: KTG, EJS

SHEET: 12 OF 103

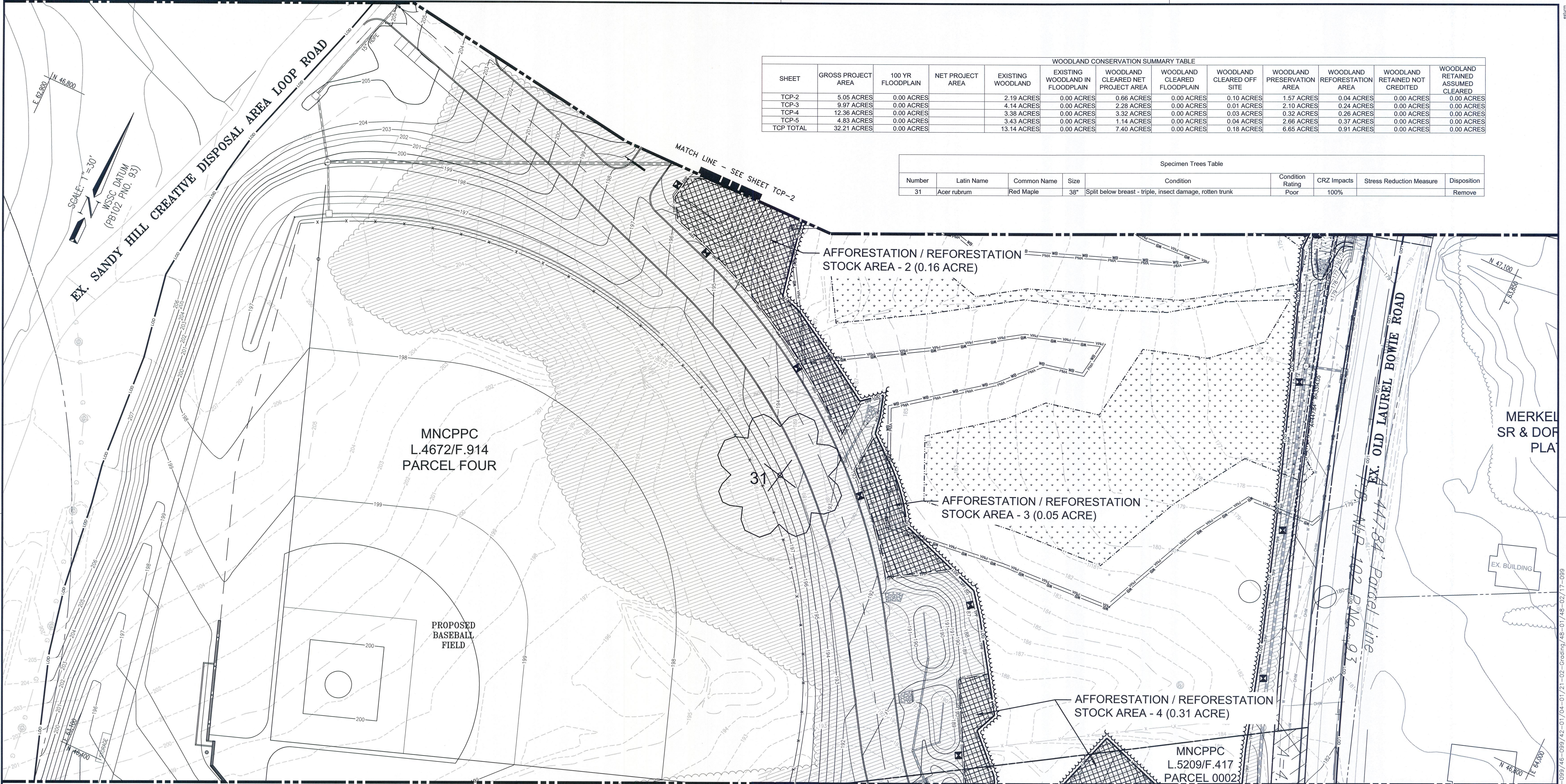
DRAFT: ADG

TCP-2 TCP-8

DATE: FEB, 2017

FILE NO.: 41-242-222

SCALE: 1" = 30'



WOODLAND CONSERVATION SUMMARY TABLE											
SHEET	GROSS PROJECT AREA	100 YR FLOODPLAIN	NET PROJECT AREA	EXISTING WOODLAND	EXISTING WOODLAND IN FLOODPLAIN	WOODLAND CLEARED NET PROJECT AREA	WOODLAND CLEARED FLOODPLAIN	WOODLAND CLEARED OFF SITE	WOODLAND PRESERVATION AREA	WOODLAND REFORESTATION AREA	WOODLAND RETAINED NOT CREDITED
TCP-2	5.05 ACRES	0.00 ACRES		2.19 ACRES	0.00 ACRES	0.66 ACRES	0.00 ACRES	0.10 ACRES	1.57 ACRES	0.04 ACRES	0.00 ACRES
TCP-3	9.97 ACRES	0.00 ACRES		4.14 ACRES	0.00 ACRES	2.28 ACRES	0.00 ACRES	0.01 ACRES	2.10 ACRES	0.24 ACRES	0.00 ACRES
TCP-4	12.36 ACRES	0.00 ACRES		3.38 ACRES	0.00 ACRES	3.32 ACRES	0.00 ACRES	0.03 ACRES	0.32 ACRES	0.26 ACRES	0.00 ACRES
TCP-5	4.83 ACRES	0.00 ACRES		3.43 ACRES	0.00 ACRES	1.14 ACRES	0.00 ACRES	0.04 ACRES	2.66 ACRES	0.37 ACRES	0.00 ACRES
TCP TOTAL	32.21 ACRES	0.00 ACRES		13.14 ACRES	0.00 ACRES	7.40 ACRES	0.00 ACRES	0.18 ACRES	6.65 ACRES	0.91 ACRES	0.00 ACRES

Specimen Trees Table									
Number	Latin Name	Common Name	Size	Condition			Condition Rating	CRZ Impacts	Stress Reduction Measure
31	Acer rubrum	Red Maple	38"	Split below breast - triple, insect damage, rotten trunk			Poor	100%	Remove

TCP-2 LEGEND

BOUNDARY LINE

PROPERTY LINE

EASEMENT LINE

EXISTING TREE LINE

PROPOSED TREE LINE

EXISTING MINOR CONTOUR

EXISTING MAJOR CONTOUR

PROPOSED MINOR CONTOUR

PROPOSED MAJOR CONTOUR

TTPF TTPF

TTPF TTPF

RP RP

LOD

PMA PMA

WETLAND

WB WB

FP FP

FB FB

1

2

WOODLAND CLEARED

AFFORESTATION/REFORESTATION

WETLAND BUFFER

100 YEAR FLOODPLAIN

FLOODPLAIN BUFFER (25 FOOT)

SPECIMEN TREE

SPECIMEN TREE REMOVED

WOODLAND CONSERVATION SIGN

Prince George's County Planning Department, M-NCPPC Environmental Planning Section TYPE 2 TREE CONSERVATION PLAN APPROVAL TCPH - 081-93			
Approved by	Date	DRD #	Reason for Revision
00 JPM	10/14/1993		
01 JPM	03/07/1996		
02 Kim Fuch	4/16/2018		
03			
04			
05			
06			
07			
08			

QUALIFIED PROFESSIONAL CERTIFICATION

TO THE BEST OF MY ABILITY AND KNOWLEDGE THIS PLAN COMPLIES WITH THE CURRENT REQUIREMENTS OF SUBTITLE 25 AND THE WOODLAND AND WILDLIFE CONSERVATION TECHNICAL MANUAL.

SIGNED: ERIC J. STURM, RLA #755
CPJ & ASSOCIATES, INC.
1751 ELTON ROAD, SUITE 300, SILVER SPRING, MD 20903
PHONE: 301-434-7000 EMAIL: ESTURM@CPJA.COM

DATE: 1-18-18

UPDATES/REVISIONS :

MISS UTILITY

Call "Miss Utility" at 1-800-257-7777, 72 hours prior to the start of work. The excavator must notify all public utility companies with underground facilities in the area of proposed excavation and have those facilities located by the utility companies prior to commencing excavation.

The Maryland-National Capital Park and Planning Commission

Prince George's County Department of Parks and Recreation
6600 Kenilworth Avenue
Riverdale, Maryland 20737
(301) 699-2441
Contact: Francis Kang

TCP II
TREE CONSERVATION PLAN VIEW

SANDY HILL PARK
BOWIE (14th) ELECTION DISTRICT
PRINCE GEORGE'S COUNTY, MARYLAND

CPJ Charles P. Johnson & Associates, Inc.
Civil and Environmental Engineers • Planners • Landscape Architects • Surveyors
1751 Elton Rd., Ste. 300 Silver Spring, MD 20903 301-434-7000 Fax: 301-434-9394
www.cpja.com • Silver Spring, MD • Gaithersburg, MD • Annapolis, MD • College Park, MD • Frederick, MD • Fairfax, VA

CLIENT: MNCPPC DEPARTMENT OF PARKS AND RECREATION
6600 KENILWORTH AVENUE
RIVERDALE, MARYLAND 20737
TELEPHONE: (301) 699-2441
CONTACT: FRANCIS KANG

TAX MAP/WSSC
N/A

DESIGN
KTG, EJS

DRAFT
ADG

DATE
FEB. 2017

SCALE
1" = 30'

SITE PLAN NO.
N/A

SHEET
13

OF
103

TCP-3
TCP-8

FILE NO.:
41-242-222

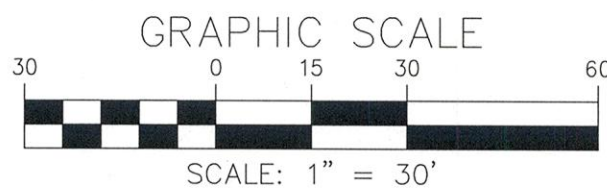
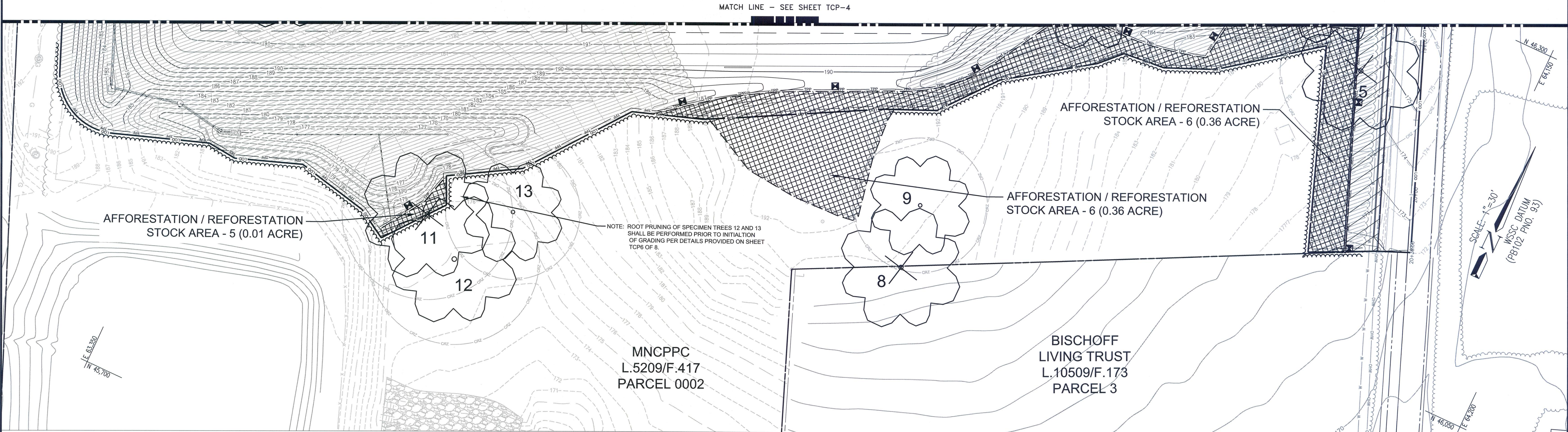
COPYRIGHT © LATEST DATE HERSON CHARLES P. JOHNSON & ASSOCIATES, INC. ALL RIGHTS RESERVED. UNAUTHORIZED USE OR REPRODUCTION IS PROHIBITED.

P:\41242\DWG\22-02.dwg, 1/18/2018 11:44:05 AM, SS-750-LM in Print Room.pc3

Last Saved 1/18/2018 Last Plotted 1/18/2018 11:44 AM Sheet P:\41242\DWG\22-02

WOODLAND CONSERVATION SUMMARY TABLE												
SHEET	GROSS PROJECT AREA	100 YR FLOODPLAIN	NET PROJECT AREA	EXISTING WOODLAND	EXISTING WOODLAND IN FLOODPLAIN	WOODLAND CLEARED NET PROJECT AREA	WOODLAND CLEARED FLOODPLAIN	WOODLAND CLEARED OFF SITE	WOODLAND PRESERVATION AREA	WOODLAND REFORESTATION AREA	WOODLAND RETAINED NOT CREDITED	WOODLAND RETAINED ASSUMED CLEARED
TCP-2	5.05 ACRES	0.00 ACRES		2.19 ACRES	0.00 ACRES	0.66 ACRES	0.00 ACRES	0.10 ACRES	1.57 ACRES	0.04 ACRES	0.00 ACRES	0.00 ACRES
TCP-3	9.97 ACRES	0.00 ACRES		4.14 ACRES	0.00 ACRES	2.28 ACRES	0.00 ACRES	0.01 ACRES	2.10 ACRES	0.24 ACRES	0.00 ACRES	0.00 ACRES
TCP-4	12.36 ACRES	0.00 ACRES		3.38 ACRES	0.00 ACRES	3.32 ACRES	0.00 ACRES	0.03 ACRES	0.32 ACRES	0.00 ACRES	0.00 ACRES	0.00 ACRES
TCP-5	4.83 ACRES	0.00 ACRES		3.43 ACRES	0.00 ACRES	1.14 ACRES	0.00 ACRES	0.04 ACRES	2.66 ACRES	0.37 ACRES	0.00 ACRES	0.00 ACRES
TCP TOTAL	32.21 ACRES	0.00 ACRES		13.14 ACRES	0.00 ACRES	7.40 ACRES	0.00 ACRES	0.18 ACRES	6.65 ACRES	0.91 ACRES	0.00 ACRES	0.00 ACRES

Specimen Trees Table									
Number	Latin Name	Common Name	Size	Condition	Condition Rating	CRZ Impacts	Stress Reduction Measure	Disposition	
5	Quercus rubra	Red Oak	36"	Many large limbs broken, lower trunk/roots good, upper form fair	Fair	100%		Remove	
8	Dead	Dead	32"		Dead	N/A		Remove	
9	Acer rubrum	Red Maple	30"	Heavy poison ivy damage, split at 10', poor upper form	Poor	0%		Save	
11	Acer rubrum	Red Maple	36"	Good, exposed roots at base	Good	100%		Remove	
12	Acer rubrum	Red Maple	38"	Split below breast, roots exposed at base, good upper form	Good	10%	Root prune	Save	
13	Quercus palustris	Pin Oak	30"	Exposed roots at base, good form	Good	11%	Root prune	Save	



TCP-2 LEGEND

---	BOUNDARY LINE
---	PROPERTY LINE
---	EASEMENT LINE
---	EXISTING TREE LINE
---	PROPOSED TREE LINE
---	EXISTING MINOR CONTOUR
---	EXISTING MAJOR CONTOUR
---	PROPOSED MINOR CONTOUR
---	PROPOSED MAJOR CONTOUR
---	TREE PROTECTION FENCE - TEMPORARY
---	TREE PROTECTION FENCE - PERMANENT
---	ROOT PRUNING
---	LIMIT OF DISTURBANCE
---	REGULATED STREAMS
---	PRIMARY MANAGEMENT AREA
---	WETLAND
---	WETLAND BUFFER
---	100 YEAR FLOODPLAIN
---	FLOODPLAIN BUFFER (25 FOOT)

	SPECIMEN TREE
	SPECIMEN TREE REMOVED
	WOODLAND CLEARED
	AFFORESTATION/REFORESTATION
	WOODLAND CONSERVATION SIGN

Prince George's County Planning Department, M-NCPPC Environmental Planning Section TYPE 2 TREE CONSERVATION PLAN APPROVAL TCP-II - 081-93				
Approved by	Date	DRD #	Reason for Revision	
00 JPM	10/14/1993			
01 JPM	03/07/1996			
02 Kim Finch	4/16/2018			
03				
04				
05				
06				
07				
08				

QUALIFIED PROFESSIONAL CERTIFICATION

TO THE BEST OF MY ABILITY AND KNOWLEDGE THIS PLAN COMPLIES WITH THE CURRENT REQUIREMENTS OF SUBTITLE 25 AND THE WOODLAND AND WILDLIFE CONSERVATION TECHNICAL MANUAL.

SIGNED:
CPJA & ASSOCIATES, INC. 1751 ELTON ROAD, SUITE 300, SILVER SPRING, MD 20903
PHONE: 301-434-7000 EMAIL: ESTURM@CPJA.COM

DATE: 1-18-18

UPDATES/REVISIONS :

MISS UTILITY

Call "Miss Utility" at 1-800-257-7777, 72 hours prior to the start of work. The excavator must notify all public utility companies with underground facilities in the area of proposed excavation and have those facilities located by the utility companies prior to commencing excavation.

The Maryland-National Capital Park and Planning Commission

Prince George's County Department of Parks and Recreation
6600 Kenilworth Avenue
Riverdale, Maryland 20737
(301) 699-2441
Contact: Francis Kang

TCP II TREE CONSERVATION PLAN VIEW					
SANDY HILL PARK BOWIE (14th) ELECTION DISTRICT PRINCE GEORGE'S COUNTY, MARYLAND					
CPJ Charles P. Johnson & Associates, Inc. Civil and Environmental Engineers • Planners • Landscape Architects • Surveyors 1751 Elton Rd., Ste. 300 Silver Spring, MD 20903 301-434-7000 Fax: 301-434-9394 www.cpja.com • Silver Spring, MD • Gaithersburg, MD • Annapolis, MD • College Park, MD • Frederick, MD • Fairfax, VA					
CLIENT: MNCPPC DEPARTMENT OF PARKS AND RECREATION 6600 KENILWORTH AVENUE RIVERDALE, MARYLAND 20737 TELEPHONE: (301) 699-2441 CONTACT: FRANCIS KANG	TAX MAP/WSSC N/A	SITE PLAN NO. N/A			
DESIGN KTG, EJS	SHEET 15	OF 103			
DRAFT ADG	DATE FEB, 2017	TCP-5 TCP-8			
SCALE 1" = 30'	FILE NO: 41-242-222				
COPYRIGHT © LATEST DATE HEREON CHARLES P. JOHNSON & ASSOCIATES, INC. ALL RIGHTS RESERVED. UNAUTHORIZED USE OR REPRODUCTION IS PROHIBITED.					

GENERAL TREE CONSERVATION PLAN NOTES

1. THIS PLAN IS SUBMITTED TO FULFILL THE WOODLAND CONSERVATION REQUIREMENTS FOR A GRADING PERMIT.
2. CUTTING OR CLEARING OF WOODLAND NOT IN CONFORMANCE WITH THIS PLAN OR WITHOUT THE EXPRESSED WRITTEN CONSENT OF THE PLANNING DIRECTOR OR DESIGNEE SHALL BE SUBJECT TO A \$9.00 PER SQUARE FOOT MITIGATION FEE.
3. A PRE-CONSTRUCTION MEETING IS REQUIRED PRIOR TO THE ISSUANCE OF GRADING PERMITS. THE DEPARTMENT OF PERMITTING, INSPECTIONS AND ENFORCEMENT (DPIE) SHALL BE CONTACTED PRIOR TO THE START OF ANY WORK ON THE SITE TO CONDUCT A PRE-CONSTRUCTION MEETING WHERE IMPLEMENTATION OF WOODLAND CONSERVATION MEASURES SHOWN ON THIS PLAN WILL BE DISCUSSED IN DETAIL.
4. THE DEVELOPER OR BUILDER OF THE LOTS OR PARCELS SHOWN ON THIS PLAN SHALL NOTIFY FUTURE BUYERS OF ANY WOODLAND CONSERVATION AREAS THROUGH THE PROVISION OF A COPY OF THIS PLAN AT TIME OF CONTRACT SIGNING. FUTURE PROPERTY OWNERS ARE ALSO SUBJECT TO THIS REQUIREMENT.
5. THE OWNERS OF THE PROPERTY SUBJECT TO THIS TREE CONSERVATION PLAN ARE SOLELY RESPONSIBLE FOR CONFORMANCE TO THE REQUIREMENTS CONTAINED HEREIN.
6. THE PROPERTY IS WITHIN THE RURAL TIER, IS ZONED R-O-S AND ENVIRONMENTAL STRATEGY AREA (ESA)3.
7. THE PROPERTY IS NOT ADJACENT TO A ROADWAY WHICH IS A DESIGNATED AS SCENIC, HISTORIC, SCENIC AND HISTORIC, PARKWAY, OR SCENIC BYWAY.
8. THE PROPERTY IS ADJACENT TO STATE ROUTE 197 (OLD LAUREL-BOWIE ROAD) WHICH IS CLASSIFIED AS A ARTERIAL ROADWAY.
9. THIS PLAN IS GRANDFATHERED UNDER CB-27-2010, SECTION 25-117 (G).

TREE PRESERVATION AND RETENTION NOTES

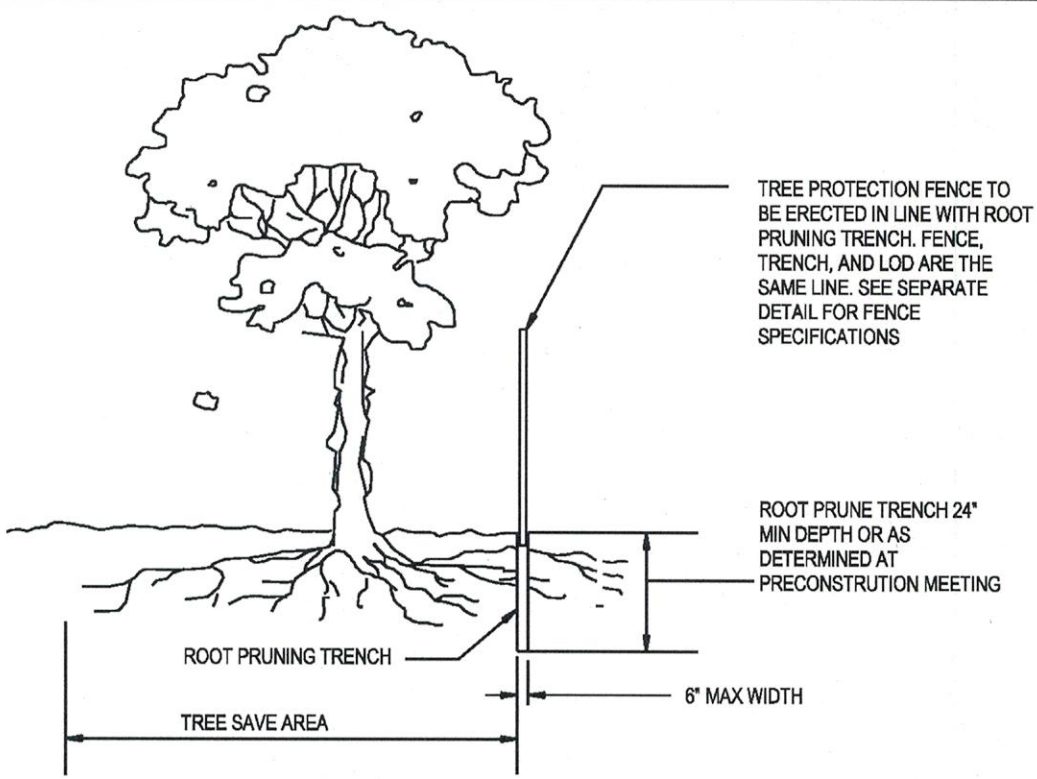
1. ALL WOODLANDS DESIGNATED ON THIS PLAN FOR PRESERVATION ARE THE RESPONSIBILITY OF THE PROPERTY OWNER. THE WOODLAND AREAS SHALL REMAIN IN A NATURAL STATE. THIS INCLUDES THE CANOPY TREES AND UNDERSTORY VEGETATION. A REVISED TREE CONSERVATION PLAN IS REQUIRED PRIOR TO CLEARING WOODLAND AREAS THAT ARE NOT SPECIFICALLY IDENTIFIED TO BE CLEARED ON THE APPROVED TCP2.
2. TREE AND WOODLAND CONSERVATION METHODS SUCH AS ROOT PRUNING SHALL BE CONDUCTED AS NOTED ON THIS PLAN.
3. THE LOCATION OF ALL TEMPORARY TREE PROTECTION FENCING (TPFS) SHOWN ON THIS PLAN SHALL BE FLAGGED OR STAKED IN THE FIELD PRIOR TO THE PRE-CONSTRUCTION MEETING. UPON APPROVAL OF THE LOCATIONS BY THE COUNTY INSPECTOR, INSTALLATION OF THE TPFS MAY BEGIN.
4. ALL TEMPORARY TREE PROTECTION FENCING REQUIRED BY THIS PLAN SHALL BE INSTALLED PRIOR TO COMMENCEMENT OF CLEARING AND GRADING OF THE SITE AND SHALL REMAIN IN PLACE UNTIL THE BOND IS RELEASED FOR THE PROJECT. FAILURE TO INSTALL AND MAINTAIN TEMPORARY OR PERMANENT TREE PROTECTIVE DEVICES IS A VIOLATION OF THIS TCP2.
5. WOODLAND PRESERVATION AREAS SHALL BE POSTED WITH SIGNAGE AS SHOWN ON THE PLANS AT THE SAME TIME AS THE TEMPORARY TPF INSTALLATION. THESE SIGNS MUST REMAIN IN PERPETUITY.
6. THE DEVELOPER AND/OR BUILDER IS RESPONSIBLE FOR THE COMPLETE PRESERVATION OF ALL FORESTED AREAS SHOWN ON THE APPROVED PLAN TO REMAIN UNDISTURBED. ONLY TREES OR PARTS THEREOF DESIGNATED BY THE COUNTY AS DEAD, DYING, OR HAZARDOUS MAY BE REMOVED.
7. A TREE IS CONSIDERED HAZARDOUS IF A CONDITION IS PRESENT WHICH LEADS A CERTIFIED ARBORIST OR LICENSED TREE EXPERT TO BELIEVE THAT THE TREE OR A PORTION OF THE TREE HAS A POTENTIAL TO FALL AND STRIKE A STRUCTURE, PARKING AREA, OR OTHER HIGH USE AREA AND RESULT IN PERSONAL INJURY OR PROPERTY DAMAGE.
8. DURING THE INITIAL STAGES OF CLEARING AND GRADING, IF HAZARDOUS TREES ARE PRESENT, OR TREES ARE PRESENT THAT ARE NOT HAZARDOUS BUT ARE LEANING INTO THE DISTURBED AREA, THE PERMITEE SHALL REMOVE SAID TREES USING A CHAIN SAW. CORRECTIVE MEASURES REQUIRING THE REMOVAL OF THE HAZARDOUS TREE OR PORTIONS THEREOF SHALL REQUIRE AUTHORIZATION BY THE COUNTY INSPECTOR. ONLY AFTER APPROVAL BY THE INSPECTOR MAY THE TREE BE CUT BY CHAINSAW TO NEAR THE EXISTING GROUND LEVEL. THE STUMP SHALL NOT BE REMOVED OR COVERED WITH SOIL, MULCH OR OTHER MATERIALS THAT WOULD INHIBIT SPROUTING.
9. IF A TREE OR TREES BECOME HAZARDOUS PRIOR TO PERMIT CLOSURE FOR THE PROJECT, DUE TO STORM EVENTS OR OTHER SITUATIONS NOT RESULTING FROM AN ACTION BY THE PERMITEE, PRIOR TO REMOVAL, A CERTIFIED ARBORIST OR A LICENSED TREE EXPERT MUST CERTIFY THAT THE TREE OR THE PORTION OF THE TREE IN QUESTION HAS A POTENTIAL TO FALL AND STRIKE A STRUCTURE, PARKING AREA, OR OTHER HIGH USE AREA AND MAY RESULT IN PERSONAL INJURY OR PROPERTY DAMAGE. IF A TREE OR PORTIONS THEREOF ARE IN IMMINENT DANGER OF STRIKING A STRUCTURE, PARKING AREA, OR OTHER HIGH USE AREA AND MAY RESULT IN PERSONAL INJURY OR PROPERTY DAMAGE THEN THE CERTIFICATION IS NOT REQUIRED AND THE PERMITEE SHALL TAKE CORRECTIVE ACTION IMMEDIATELY. THE CONDITION OF THE AREA SHALL BE FULLY DOCUMENTED THROUGH PHOTOGRAPHS PRIOR TO CORRECTIVE ACTION BEING TAKEN. THE PHOTOS SHALL BE SUBMITTED TO THE INSPECTOR FOR DOCUMENTATION OF THE DAMAGE. IF CORRECTIVE PRUNING MAY ALLEVIATE A HAZARDOUS CONDITION, THE CERTIFIED ARBORIST OR A LICENSED TREE EXPERT MAY PROCEED WITHOUT FURTHER AUTHORIZATION. THE PRUNING MUST BE DONE IN ACCORDANCE WITH THE LATEST EDITION OF THE APPROPRIATE ANSI A-300 PRUNING STANDARDS. THE CONDITION OF THE AREA SHALL BE FULLY DOCUMENTED THROUGH PHOTOGRAPHS PRIOR TO CORRECTIVE ACTION BEING TAKEN. THE PHOTOS SHALL BE SUBMITTED TO THE INSPECTOR FOR DOCUMENTATION OF THE DAMAGE. DEBRIS FROM THE TREE REMOVAL OR PRUNING THAT OCCURS WITHIN 35 FEET OF THE WOODLAND EDGE MAY BE REMOVED AND PROPERLY DISPOSED OF BY RECYCLING, CHIPPING OR OTHER ACCEPTABLE METHODS. ALL DEBRIS THAT IS MORE THAN 35 FEET FROM THE WOODLAND EDGE SHALL BE CUT UP TO ALLOW CONTACT WITH THE GROUND, THUS ENCOURAGING DECOMPOSITION. THE SMALLER MATERIALS SHALL BE PLACED INTO BRUSH PILES THAT WILL SERVE AS WILDLIFE HABITAT. TREE WORK TO BE COMPLETED WITHIN A ROAD RIGHT-OF-WAY REQUIRES A PERMIT FROM THE MARYLAND DEPARTMENT OF NATURAL RESOURCES UNLESS THE TREE REMOVAL IS SHOWN WITHIN THE APPROVED LIMITS OF DISTURBANCE ON A TCP2. THE WORK IS REQUIRED TO BE CONDUCTED BY A LICENSED TREE EXPERT.

WHEN VIRGINIA PINES ARE PRESENT WITHIN 40 FEET OF THE LIMITS OF DISTURBANCE IN A PRESERVATION AREA:

1. THE SUBJECT PROPERTY CONTAINS VIRGINIA PINES (PINUS VIRGINIANA) THAT ARE SUBJECT TO WIND THROW. ALL VIRGINIA PINES GREATER THAN 6 INCHES IN DIAMETER WITHIN 40 FEET OF THE FINAL PROPOSED LIMIT OF DISTURBANCE OR THE BOUNDARY OF THE PROPERTY SHALL BE CUT DOWN BY HAND DURING THE CLEARING OF THE SITE.
2. AFTER THE VIRGINIA PINES HAVE BEEN REMOVED, THE CONTRACTOR RESPONSIBLE FOR IMPLEMENTATION OF THIS TCP2 SHALL SUBMIT AN EVALUATION OF THE STOCKING LEVELS FOR THE RESIDUAL STAND, MANAGEMENT TECHNIQUES TO BE APPLIED TO THE RESIDUAL STAND, AND SUPPLEMENTAL PLANTING REQUIREMENTS TO THE M-NCPPC PLANNING DEPARTMENT. THIS EVALUATION SHALL BE SUBMITTED PRIOR TO THE ISSUANCE OF THE FIRST BUILDING PERMIT TO ENSURE THAT ALL HIGH RISK TREES HAVE BEEN REMOVED. A PLANTING SCHEDULE AND/OR DETAILS FOR THE MANAGEMENT OF NATURAL REGENERATION TO FULLY RESTOCK THE SITE MUST BE SHOWN ON THE PLAN.

OFF-SITE WOODLAND CONSERVATION

1. PRIOR TO THE ISSUANCE OF THE FIRST PERMIT FOR THE DEVELOPMENT SHOWN ON THIS TCP2, ALL OFF SITE WOODLAND CONSERVATION REQUIRED BY THIS PLAN SHALL BE IDENTIFIED ON AN APPROVED TCP2 PLAN AND A PUBLIC TRANSFER CERTIFICATE SHALL BE PROVIDED TO THE M-NCPPC, PLANNING DEPARTMENT PRIOR TO ISSUANCE OF ANY PERMIT FOR THE ASSOCIATED PLAN.

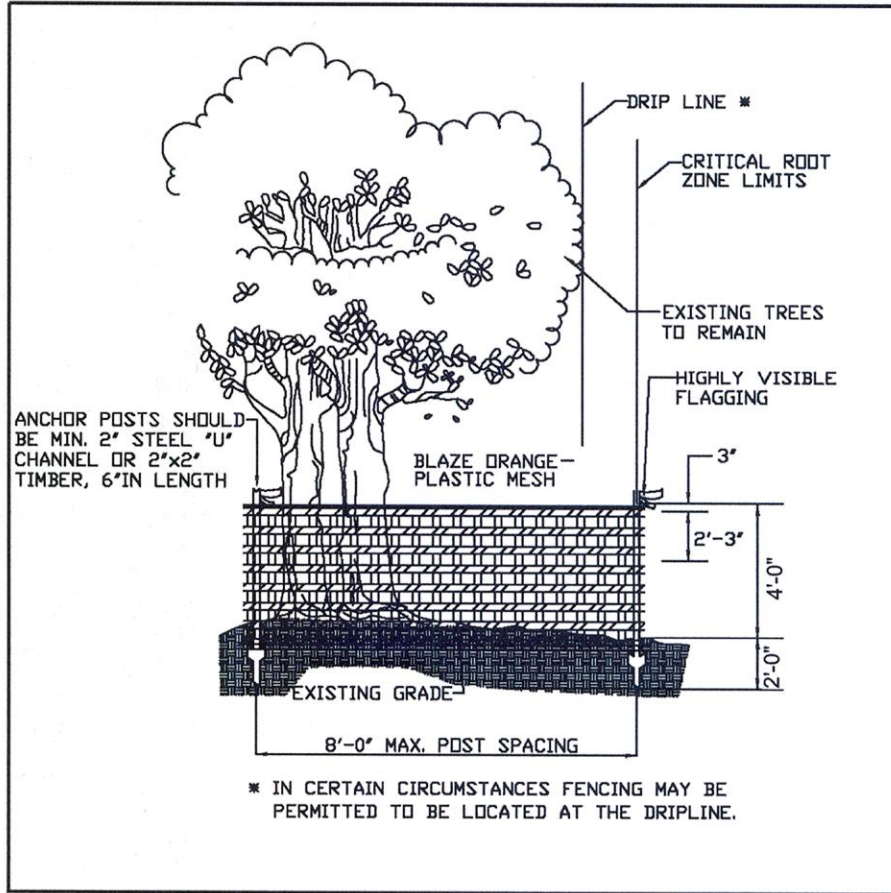


NOTES:

1. RETENTION AREAS WILL BE SET AS PART OF THE REVIEW PROCESS AND PRECONSTRUCTION MEETING.
2. BOUNDARIES OF RETENTION AREAS MUST BE STAKED AT THE PRECONSTRUCTION MEETING AND FLAGGED PRIOR TO TRENCHING.
3. EXACT LOCATION OF TRENCH SHALL BE DETERMINED IN THE FIELD IN COORDINATION WITH THE FOREST CONSERVATION (FC) INSPECTOR.
4. TRENCH SHOULD BE IMMEDIATELY BACKFILLED WITH EXCAVATED SOIL OR OTHER ORGANIC SOIL AS SPECIFIED PER PLAN OR BY THE FC INSPECTOR.
5. ROOTS SHALL BE CLEANLY CUT USING VIBRATORY KNIFE OR OTHER ACCEPTABLE EQUIPMENT.
6. ALL PRUNING MUST BE EXECUTED WITH LOD SHOWN ON PLANS OR AS AUTHORIZED IN WRITING BY THE FC INSPECTOR.

ROOT PRUNING DETAIL

NTS



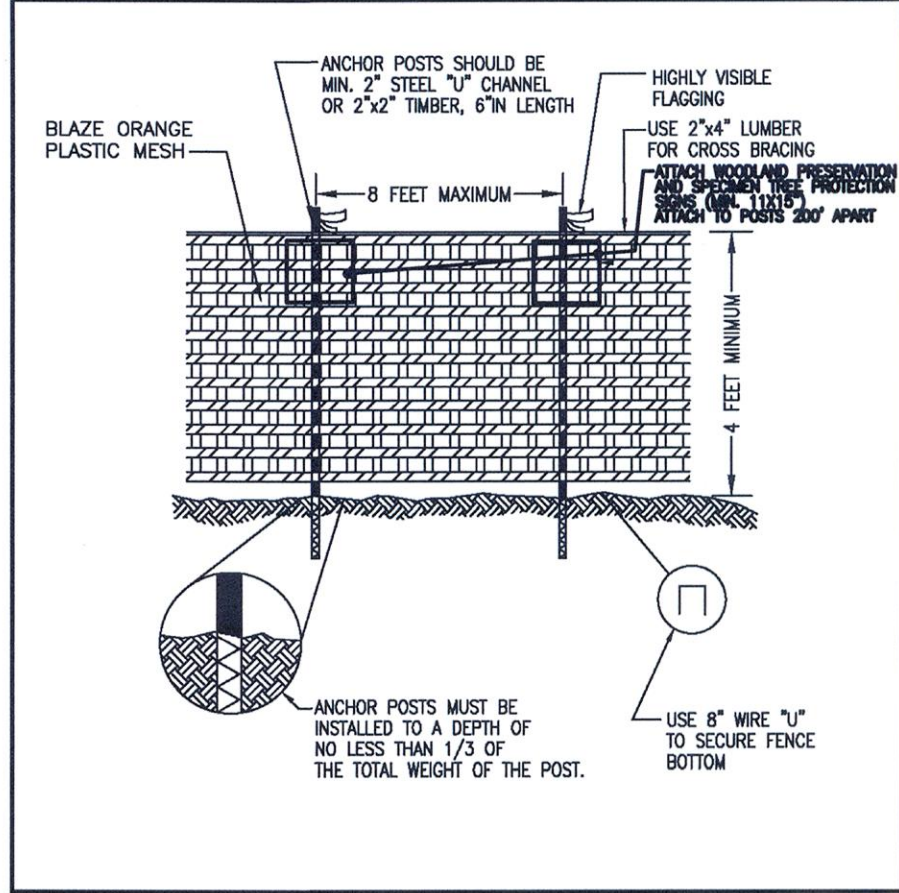
NOTES: (MUST BE INCLUDED WITH DETAIL)

1. FOREST PROTECTION DEVICE ONLY.
2. RETENTION AREA WILL BE SET AS PART OF THE REVIEW PROCESS.
3. BOUNDARIES OF RETENTION AREA SHOULD BE STAKED AND FLAGGED PRIOR TO INSTALLING DEVICES.
4. AVOID ROOT DAMAGE WHEN PLACING ANCHOR POSTS.
5. DEVICE SHOULD BE PROPERLY MAINTAINED DURING CONSTRUCTION
6. PROTECTIVE SIGNAGE IS ALSO REQUIRED.

TEMPORARY FENCE PROTECTION DETAIL FOR WOODLAND PRESERVATION AREAS (TPF)

August 2010

A-4, DET-5



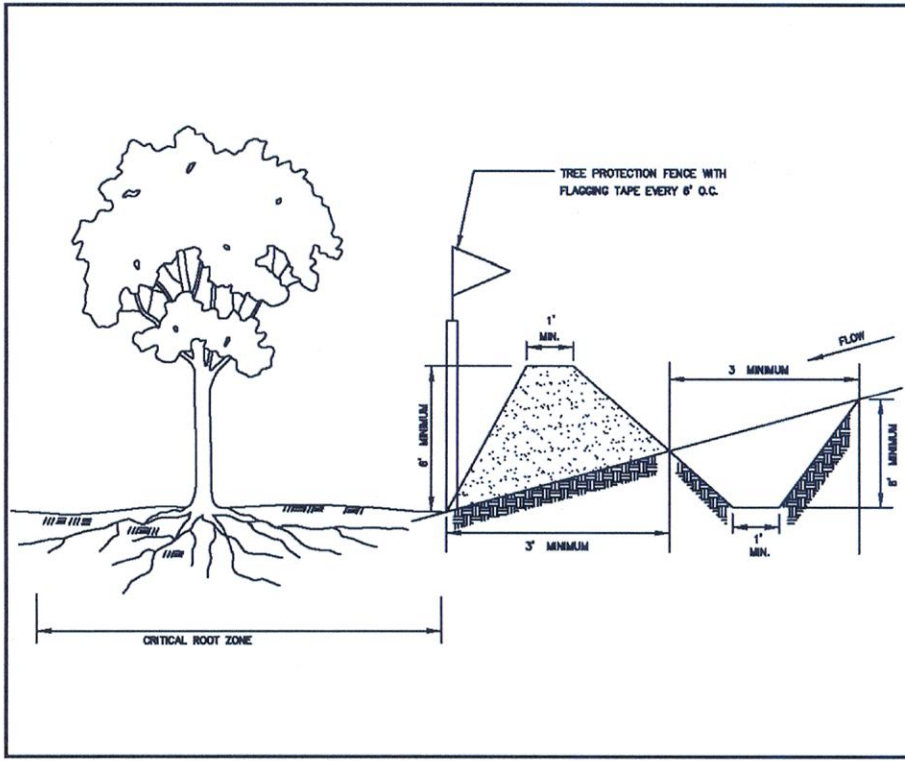
NOTES: (MUST BE INCLUDED WITH DETAIL)

1. FOREST PROTECTION DEVICE ONLY.
2. RETENTION AREA WILL BE SET AS PART OF THE REVIEW PROCESS.
3. BOUNDARIES OF RETENTION AREA SHOULD BE STAKED AND FLAGGED PRIOR TO INSTALLING DEVICES.
4. AVOID ROOT DAMAGE WHEN PLACING ANCHOR POSTS.
5. DEVICE SHOULD BE PROPERLY MAINTAINED DURING CONSTRUCTION
6. PROTECTIVE SIGNAGE IS ALSO REQUIRED.

TYPE 1 (TEMPORARY) TREE PROTECTION FENCE DETAIL FOR WOODLAND PRESERVATION AREAS (TPF)

August 2010

A-4, DET-4



NOTES:

1. COMBINATION SEDIMENT CONTROL AND FOREST PROTECTION DEVICE.
2. BOUNDARIES OF THE RETENTION AREA WILL BE SET AS PART OF THE FOREST CONSERVATION PLAN REVIEW PROCESS.
3. BOUNDARIES OF RETENTION AREA SHOULD BE STAKED PRIOR TO INSTALLING PROTECTIVE DEVICE.
4. ROOT DAMAGE SHOULD BE AVOIDED.
5. THE TOE OF SLOPE SHOULD BE OUTSIDE THE CRITICAL ROOT ZONE.
6. EQUIPMENT IS PROHIBITED WITHIN CRITICAL ROOT ZONE OF RETENTION AREA; PLACE DIKE ACCORDINGLY.
7. ALL STANDARD MAINTENANCE FOR EARTHEN DIKES AND SWALES APPLY TO THESE DETAILS.
8. ALL STANDARD RECLAMATION PRACTICES FOR EARTHEN DIKES AND SWALES SHALL APPLY TO THESE DETAILS.

TYPE 3 (TEMPORARY) TREE PROTECTION FENCE COMBINATION SILT FENCE & TREE PROTECTION (TPF)

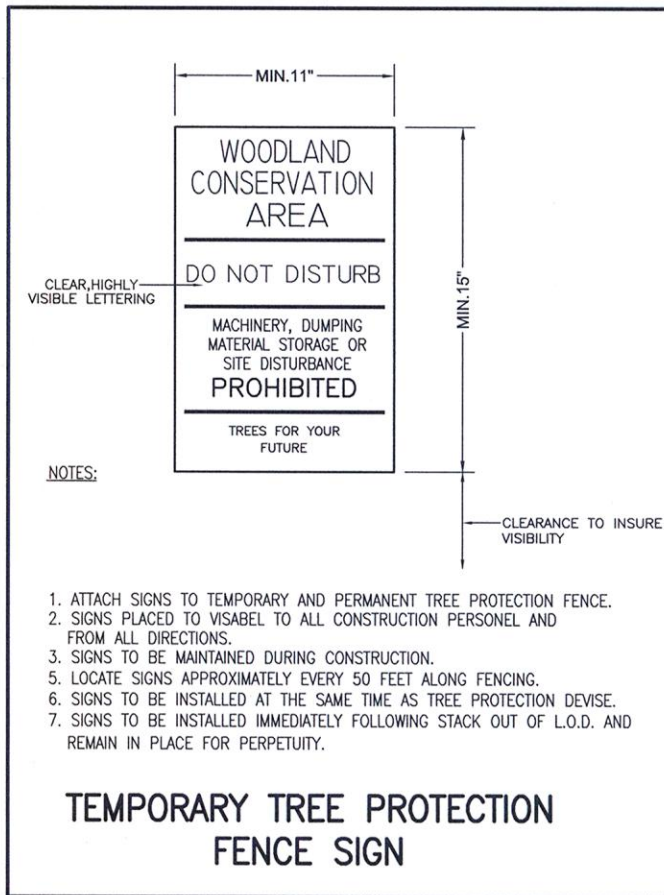
August 2010

A-4, DET-7

Specimen Trees Table									
Number	Latin Name	Common Name	Size	Condition	Condition Rating	CRZ Impacts	Stress Reduction Measure	Disposition	
1	Quercus velutina	Black Oak	41"	Insect damage on trunk, dead upper branches	Poor	100%	Remove	(See note below)	
3	Juniperus virginiana	Cedar	36"	Dying	Poor	100%	Remove		
5	Quercus rubra	Red Oak	36"	Many large limbs broken, lower trunk/roots good, upper form fair	Fair	100%	Remove		
7	Dead	Dead	32"		Dead	N/A	Remove		
8	Dead	Dead	32"		Dead	N/A	Remove		
9	Acer rubrum	Red Maple	30"	Heavy poison ivy damage, split at 10', poor upper form	Poor	0%	Save		
11	Acer rubrum	Red Maple	36"	Good, exposed roots at base	Good	100%	Remove		
12	Acer rubrum	Red Maple	38"	Split below breast, roots exposed at base, good upper form	Good	10%	Root prune	Save	
13	Quercus palustris	Pin Oak	30"	Exposed roots at base, good form	Good	0%	Save		
18	Quercus phellos	Willow Oak	36"	Form good, lower good, upper limb damage, English ivy	Good	11%	Root prune	Save	
22	Quercus	Oak	32"	Good form, dead upper branch	Good	100%	Remove		
24	Quercus phellos	Willow Oak	38"	Excellent overall, base and form good, some dead lower limbs	Good	0%	Save		
25	Quercus	Oak	35"	Split at 8' height, base and form good, some dead/broken limbs	Good	0%	Save		
28	Quercus phellos	Willow Oak	44"	Split at 13', dead/broken branches, base good	Fair	100%	Remove		
29	Liquidambar styraciflua	Sweetgum	34"	Base good, poison/English ivy, no mid-low limbs, upper form good	Good	100%	Remove		
31	Acer rubrum	Red Maple	38"	Split below breast - triple, insect damage, rotten trunk	Poor	100%	Remove		

Notes:

1. Specimen tree 1 will be evaluated for saving by a Prince Georges County Arborist. This plan provides for mitigating for the loss of the tree should it be deemed necessary.
2. This plan is approved in accordance with the following variance (s) from the strict requirements of subtitle 25 approved by the Planning Director on September 15, 2016:
A. The removal of eight Specimen Trees (section 25-122(B)(1)(6)): ST's-1, 3, 5, 11, 18, 28, 29 and 31.



Prince George's County Planning Department, M-NCPPC Environmental Planning Section TYPE 2 TREE CONSERVATION PLAN APPROVAL TCPH - 081-93				
Approved by	Date	DRD #	Reason for Revision	
00 JPM	10/14/1993			
01 JPM	03/07/1996			
02 Kim Fuch	4/16/2018			
03				
04				
05				
06				
07				
08				

QUALIFIED PROFESSIONAL CERTIFICATION

TO THE BEST OF MY ABILITY AND KNOWLEDGE THIS PLAN COMPLIES WITH THE CURRENT REQUIREMENTS OF SUBTITLE 25 AND THE WOODLAND AND WILDLIFE CONSERVATION TECHNICAL MANUAL.

SIGNED: DATE: 1-18-18
CPJ & ASSOCIATES, INC. ARCHITECT ERIC J. STURM, RLA #755
1751 ELTON ROAD, SUITE 300, SILVER SPRING, MD 20903
PHONE: 301-434-7000 EMAIL: ESTURM@CPJA.COM

UPDATES/REVISIONS :

MISS UTILITY

Call "Miss Utility" at 1-800-257-7777, 72 hours prior to the start of work. The excavator must notify all public utility companies with underground facilities in the area of proposed excavation and have those facilities located by the utility companies prior to commencing excavation.

The Maryland-National Capital
Park and Planning Commission

Prince George's County Department
of Parks and Recreation

6600 Kenilworth Avenue
Riverdale, Maryland 20737
(301) 699-2441

Contact: Francis Kang

TCP II
TREE CONSERVATION NOTES AND DETAILS

SANDY HILL PARK
BOWIE (14th) ELECTION DISTRICT
PRINCE GEORGE'S COUNTY, MARYLAND

CPJ Charles P. Johnson & Associates, Inc.
Civil and Environmental Engineers • Planners • Landscape Architects • Surveyors
1751 Elton Rd., Ste. 300 Silver Spring, MD 20903 301-434-7000 Fax: 301-434-9394
www.cpja.com • Silver Spring, MD • Gaithersburg, MD • Annapolis, MD • College Park, MD • Frederick, MD • Fairfax, VA

CLIENT: MNCPPC DEPARTMENT OF PARKS AND RECREATION 6600 KENILWORTH AVENUE RIVERDALE, MARYLAND 20737 TELEPHONE: (301) 699-2441 CONTACT: FRANCIS KANG	TAX MAP/WSSC: N/A	SITE PLAN NO. N/A
DESIGN: KTG, EJS	SHEET: 16	OF: 103
DRAFT: ADG	TCP-6	TCP-8
DATE: FEB. 2017	FILE NO.:	
SCALE: AS-SHOWN	41-242-222	

COPYRIGHT © LATEST DATE HERSON CHARLES P. JOHNSON & ASSOCIATES, INC. ALL RIGHTS RESERVED. UNAUTHORIZED USE OR REPRODUCTION IS PROHIBITED.

AFFORESTATION AND REFORESTATION NOTES

- ALL AFFORESTATION AND REFORESTATION BONDS, BASED ON SQUARE FOOTAGE, SHALL BE POSTED WITH THE COUNTY PRIOR TO THE ISSUANCE OF ANY PERMITS. THESE BONDS WILL BE RETAINED AS SURETY UNTIL ALL REQUIRED ACTIVITIES HAVE BEEN SATISFIED OR THE REQUIRED TIMEFRAME FOR MAINTENANCE HAS PASSED, WHICHEVER IS LONGER.
- THE PLANTING OF AFFORESTATION OR REFORESTATION AREAS SHALL BE COMPLETED PRIOR TO THE ISSUANCE OF THE FIRST BUILDING PERMIT. (THIS STANDARD NOTE MAY BE MODIFIED AS NECESSARY TO ADDRESS WHICH BUILDING PERMITS ARE ADJACENT TO THE PROPOSED PLANTING AREA.) SEEDLING PLANTING IS TO OCCUR FROM NOVEMBER THROUGH MAY ONLY. NO PLANTING SHALL BE DONE WHILE GROUND IS FROZEN. PLANTING WITH LARGER CALIPER STOCK OR CONTAINERIZED STOCK MAY BE DONE AT ANY TIME PROVIDED A DETAILED MAINTENANCE SCHEDULE IS PROVIDED.
- IF PLANTING CANNOT OCCUR DUE TO PLANTING CONDITIONS, THE DEVELOPER OR PROPERTY OWNER SHALL INSTALL THE FENCING AND SIGNAGE IN ACCORDANCE WITH THE APPROVED TYPE 2 TREE CONSERVATION PLAN. PLANTING SHALL THEN BE ACCOMPLISHED DURING THE NEXT PLANTING SEASON. IF PLANTING IS DELAYED BEYOND THE TRANSFER OF THE PROPERTY TITLE TO THE HOMEOWNER, THE DEVELOPER OR BUILDER SHALL OBTAIN A SIGNED STATEMENT FROM THE PURCHASER INDICATING THAT THEY UNDERSTAND THAT THE REFORESTATION AREA IS LOCATED ON THEIR PROPERTY AND THAT REFORESTATION WILL OCCUR DURING THE NEXT PLANTING SEASON. A COPY OF THAT DOCUMENT SHALL BE PRESENTED TO THE GRADING INSPECTOR AND THE COUNTY.
- REFORESTATION AREAS SHALL NOT BE MOWED. THE MANAGEMENT OF COMPETING VEGETATION AROUND INDIVIDUAL TREES AND THE REMOVAL OF NOXIOUS, INVASIVE, AND NON-NATIVE VEGETATION WITHIN THE REFORESTATION AREAS IS ACCEPTABLE.
- ALL REQUIRED TEMPORARY TREE PROTECTION FENCING SHALL BE INSTALLED PRIOR TO THE CLEARING AND GRADING OF THE SITE AND SHALL REMAIN IN PLACE UNTIL THE PERMANENT TREE PROTECTION FENCING IS INSTALLED WITH THE REQUIRED PLANTING. THE TEMPORARY FENCING IS NOT REQUIRED TO BE INSTALLED IF THE PERMANENT FENCING IS INSTALLED PRIOR TO CLEARING AND GRADING OF THE SITE. FAILURE TO INSTALL AND MAINTAIN TEMPORARY OR PERMANENT TREE PROTECTIVE FENCING IS A VIOLATION OF THIS TCP2.
- AFFORESTATION/REFORESTATION AREAS SHALL BE POSTED WITH NOTIFICATION SIGNAGE, AS SHOWN ON THE PLANS, AT THE SAME TIME AS THE PERMANENT PROTECTION FENCING INSTALLATION. THESE SIGNS SHALL REMAIN IN PERPETUITY.
- THE COUNTY INSPECTOR SHALL BE NOTIFIED PRIOR TO SOIL PREPARATION OR INITIATION OF ANY TREE PLANTING ON THIS SITE.
- AT TIME OF ISSUANCE OF THE FIRST PERMIT, THE FOLLOWING INFORMATION SHALL BE SUBMITTED TO THE M-NCPPC PLANNING DEPARTMENT REGARDING THE CONTRACTOR RESPONSIBLE FOR IMPLEMENTATION OF THIS PLAN: CONTRACTOR NAME, BUSINESS NAME (IF DIFFERENT), ADDRESS, AND PHONE NUMBER. RESULTS OF ANNUAL SURVIVAL CHECKS FOR EACH OF THE REQUIRED FOUR YEARS AFTER TREE PLANTING SHALL BE REPORTED TO THE M-NCPPC, PLANNING DEPARTMENT.
- FAILURE TO ESTABLISH THE AFFORESTATION OR REFORESTATION WITHIN THE PRESCRIBED TIME FRAME WILL RESULT IN THE FORFEITURE OF THE REFORESTATION BOND AND/OR A VIOLATION OF THIS PLAN INCLUDING THE ASSOCIATED \$9.00 PER SQUARE FOOT PENALTY UNLESS THE COUNTY INSPECTOR APPROVES A WRITTEN EXTENSION.

PLANTING SPECIFICATION NOTES

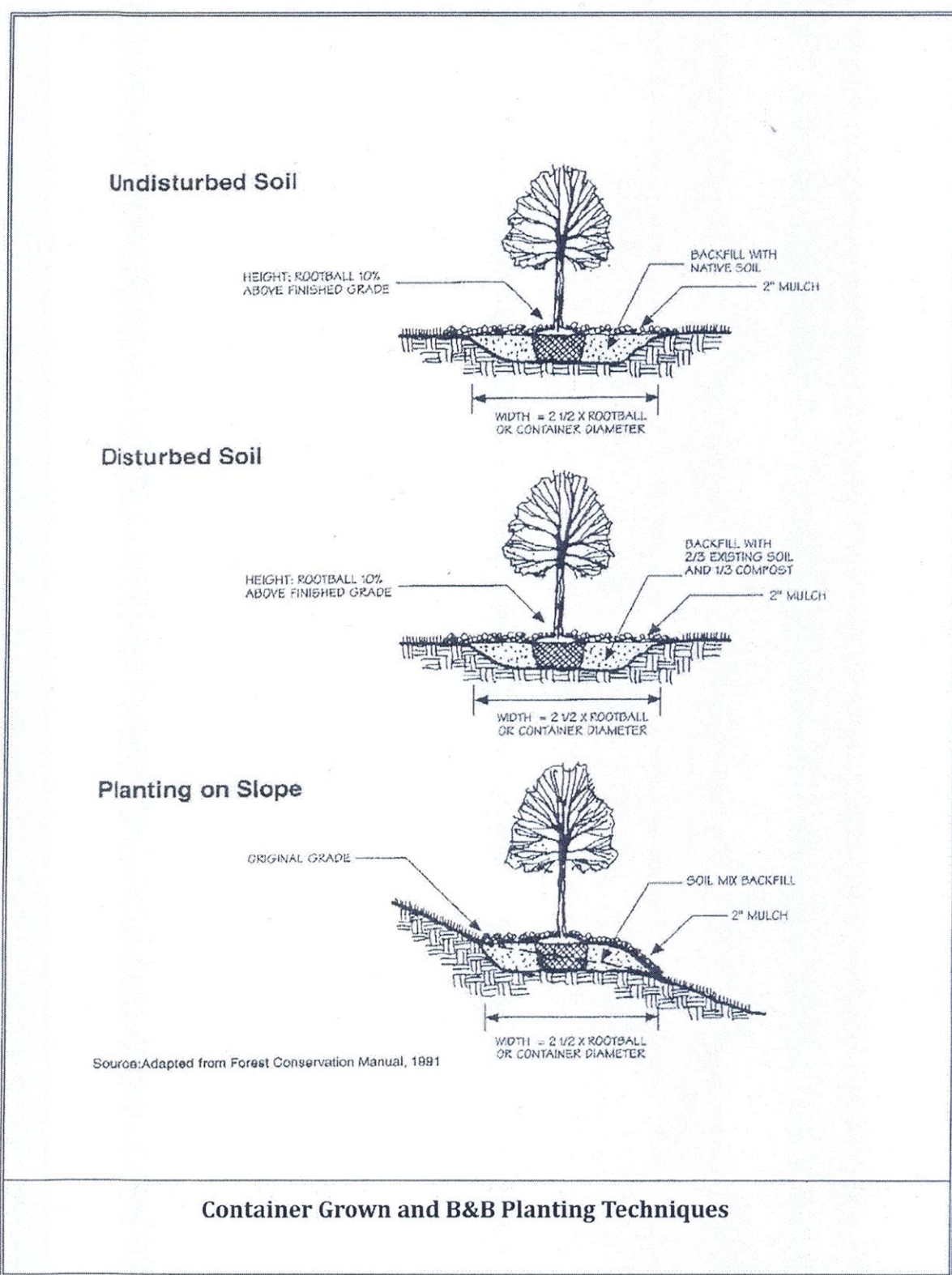
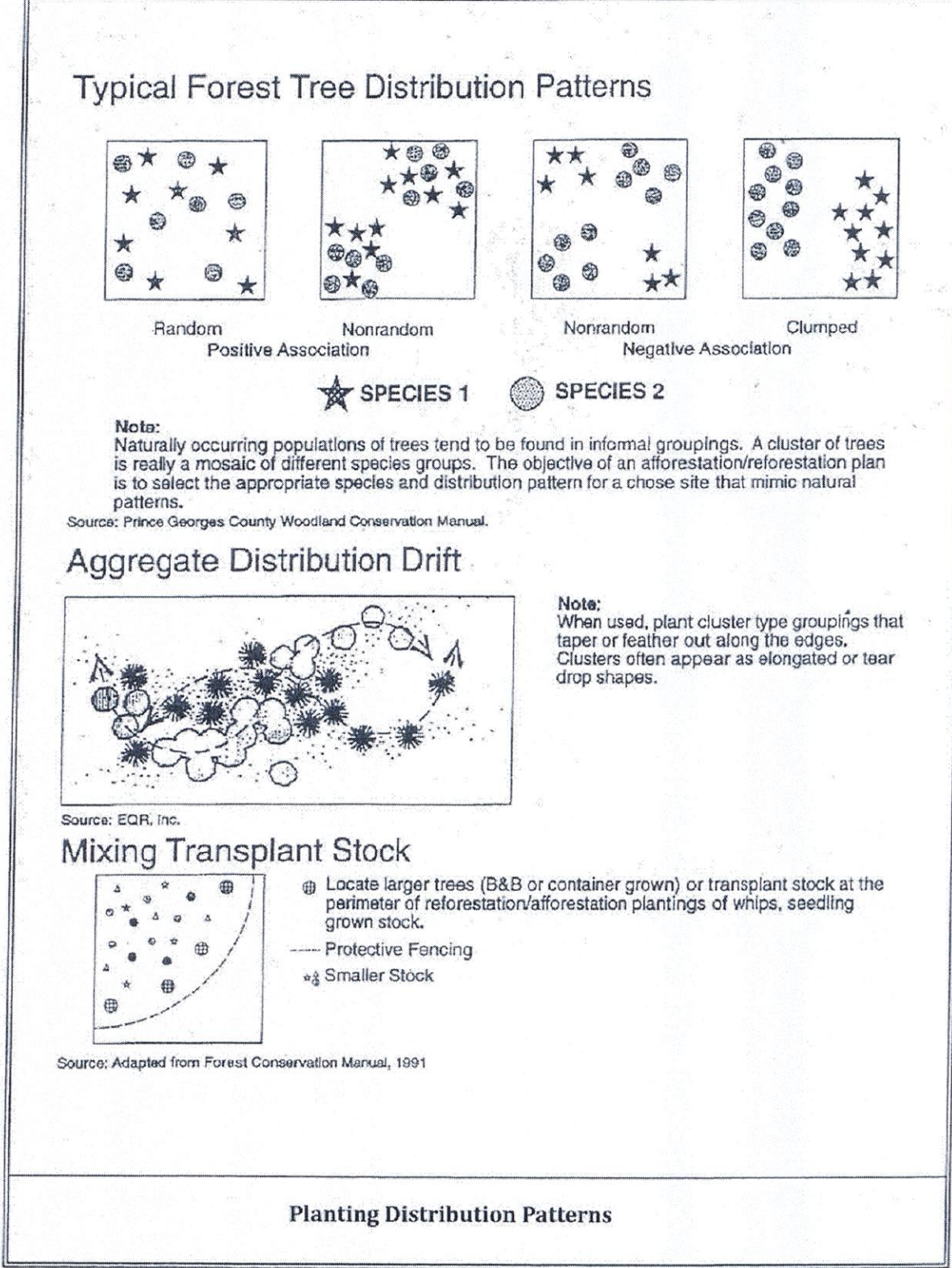
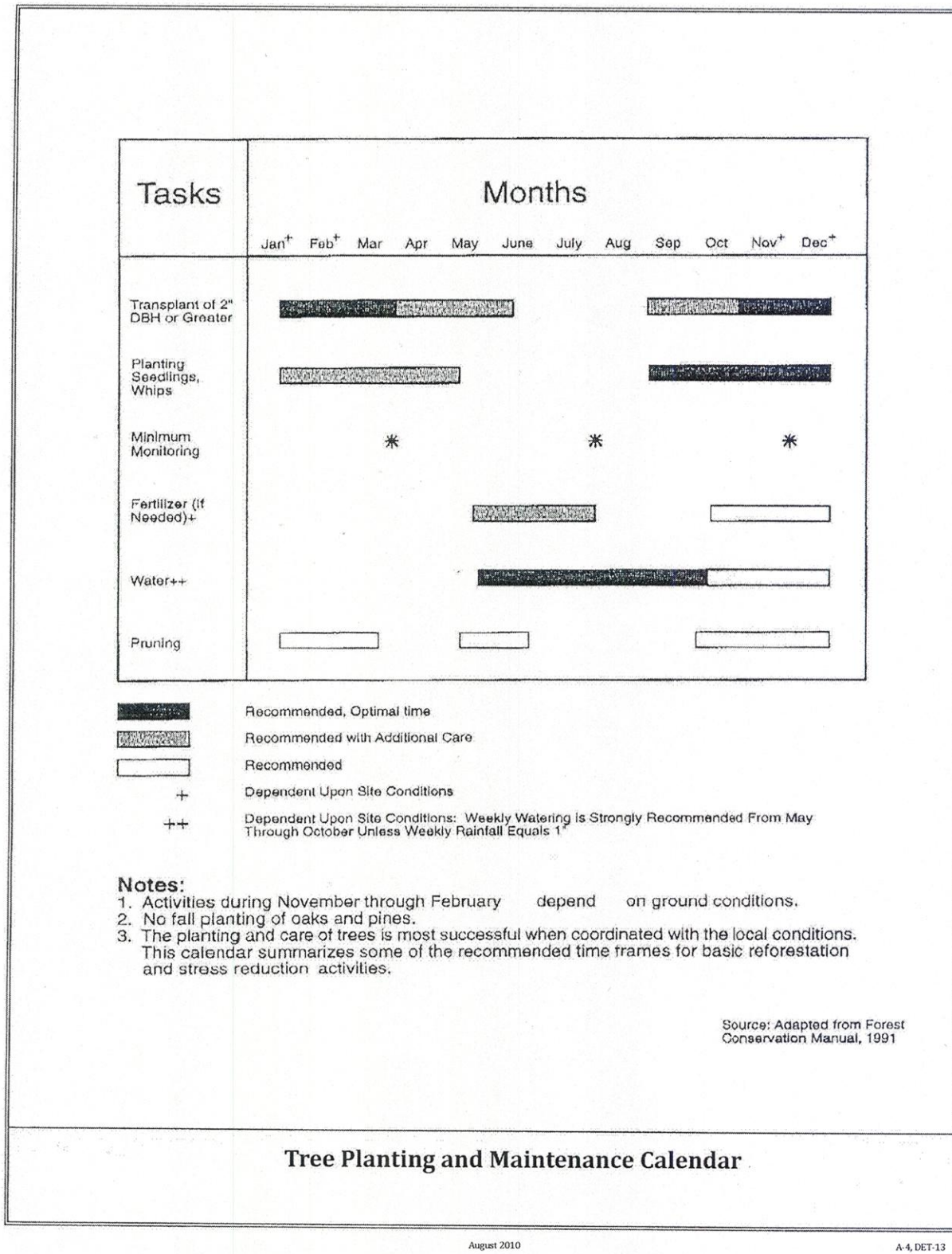
- QUANTITY: (SEE PLANT SCHEDULE)
- TYPE: (SEE PLANT SCHEDULE)
- PLANT QUALITY STANDARDS: THE PLANTS SELECTED SHALL BE HEALTHY AND STURDY REPRESENTATIVES OF THEIR SPECIES. SEEDLINGS SHALL HAVE A MINIMUM TOP GROWTH OF 18". THE DIAMETER OF THE ROT COLLAR (THE PART OF THE ROOT JUST BELOW GROUND LEVEL) SHALL BE AT LEAST 3/4". THE ROOTS SHALL BE WELL DEVELOPED AND AT LEAST 8" LONG. NO MORE THAN TWENTY-FIVE PERCENT (25%) OF THE ROOT SYSTEM (BOTH PRIMARY AND AUXILIARY/FIBROUS ROOTS) SHALL BE PRESENT.

PLANTS THAT DO NOT HAVE AN ABUNDANCE OF WELL DEVELOPED TERMINAL BUDS ON THE LEADERS AND BRANCHES SHALL BE REJECTED.

PLANTS SHALL BE SHIPPED BY THE NURSERY IMMEDIATELY AFTER LIFTING FROM THE FIELD OR REMOVAL FROM THE GREEN HOUSE, AND PLANTED IMMEDIATELY UPON RECEIPT BY THE LANDSCAPE CONTRACTOR.

IF THE PLANTS CANNOT BE PLANTED IMMEDIATELY AFTER DELIVERY TO THE REFORESTATION SITE, THEY SHALL BE STORED IN THE SHADE WITH THEIR ROOT MASSES PROTECTED FROM DIRECT EXPOSURE TO SUN AND WIND BY THE USE OF STRAW, PEAT MOSS, COMPOST, OR OTHER SUITABLE MATERIAL AND SHALL BE MAINTAINED THROUGH PERIODIC WATERING, UNTIL THE TIME OF PLANTING. ALL PLANTING STOCK WILL MEET OR EXCEED THE STANDARDS SET BY THE AMERICAN NURSERY AND LANDSCAPE ASSOCIATION.

- PLANT HANDLING: THE QUANTITY OF SEEDLINGS TAKEN TO THE FIELD SHALL NOT EXCEED THE QUANTITY THAT CAN BE PLANTED IN A DAY. SEEDLINGS, ONCE REMOVED FROM THE NURSERY OR TEMPORARY STORAGE AREA SHALL BE PLANTED IMMEDIATELY.
- TIMING OF PLANTING: THE BEST TIME TO PLANT SEEDLINGS IS WHILE THEY ARE DORMANT, PRIOR TO SPRING BUDDING. THE MOST SUITABLE MONTHS FOR PLANTING ARE MARCH AND APRIL, WHEN THE SOIL IS MOIST, BUT MAY BE PLANTED FROM MARCH THROUGH NOVEMBER. NO PLANTING SHALL BE DONE WHILE GROUND IS FROZEN. PLANTING SHALL OCCUR WITHIN ONE GROWING SEASON OF THE ISSUANCE OF GRADING/BUILDING PERMITS AND/OR REACHING THE FINAL GRADES AND STABILIZATION OF PLANTING AREAS.
- SEEDLING PLANTING: TREE SEEDLINGS SHALL BE HAND PLANTED USING A DIBBLE BAR OR SHARP-SHOOTER SHOVEL. IT IS IMPORTANT THAT THE SEEDLING BE PLACED IN THE HOLE SO THAT THE ROOTS CAN SPREAD OUT NATURALLY; THEY SHOULD NOT BE TWISTED, BALLED UP OR BENT. MOIST SOIL SHOULD THEN BE PACKED FIRMLY AROUND THE ROOTS. SEEDLINGS SHOULD BE PLANTED AT A DEPTH WHERE THEIR ROOTS LIE JUST BELOW THE GROUND SURFACE. AIR POCKETS SHOULD NOT BE LEFT AFTER CLOSING THE HOLE WHICH WOULD ALLOW THE ROOTS TO DRY OUT. SEE PLANTING DETAILS FOR FURTHER EXPLANATION. IF THE CONTRACTOR WISHES TO PLANT BY ANOTHER METHOD, THE PREPARER OF THIS TREE CONSERVATION PLAN MUST BE CONTACTED AND GIVE HIS APPROVAL BEFORE PLANTING MAY BEGIN.
- SPACING: SEE PLANT SCHEDULE AND/OR PLANTING PLAN FOR SPACING REQUIREMENTS. ALSO REFER TO THE PLANTING LAYOUT DETAIL FOR A DESCRIPTION OF THE GENERAL PLANTING THEORY.
- SOIL: UPON THE COMPLETION OF ALL GRADING OPERATIONS, A SOIL TEST SHALL BE CONDUCTED TO DETERMINE WHAT SOIL PREPARATION AND SOIL AMENDMENTS, IF ANY, ARE NECESSARY TO CREATE GOOD TREE GROWING CONDITIONS. SOIL SAMPLES SHALL BE TAKEN AT A RATE THAT PROVIDES ONE SOIL SAMPLE FOR EACH AREA THAT APPEARS TO HAVE A DIFFERENT SOIL TYPE (IF THE ENTIRE AREA APPEARS UNIFORM, THEN ONLY ONE SAMPLE IS NECESSARY), AND SUBMITTED FOR TESTING TO A PRIVATE COMPANY. THE COMPANY OF CHOICE SHALL MAKE RECOMMENDATIONS FOR IMPROVING THE EXISTING SOIL. THE SOIL WILL BE TESTED AND RECOMMENDED FOR CORRECTIONS OF SOIL TEXTURE, PH, MAGNESIUM, PHOSPHORUS, POTASSIUM, CALCIUM AND ORGANIC MATTER.
- SOIL IMPROVEMENT MEASURES: THE SOIL SHALL THEN BE IMPROVED ACCORDING TO THE RECOMMENDATIONS MADE BY THE TESTING COMPANY.
- FENCING AND SIGNAGE: FINAL PROTECTIVE FENCING SHALL BE PLACED ON THE VISIBLE AND/OR DEVELOPMENT SIDE OF PLANTING AREAS. THE FINAL PROTECTIVE FENCE SHALL BE INSTALLED UPON COMPLETION OF PLANTING OPERATIONS UNLESS IT WAS INSTALLED DURING THE INITIAL STAGES OF DEVELOPMENT. SIGNS SHALL BE POSTED PER THE SIGNAGE DETAIL ON THIS SHEET.
- PLANTING METHOD: CONSULT THE PLANTING DETAIL(S) SHOWN ON THIS PLAN.
- MULCHING: APPLY TWO-INCH THICK LAYER OF WOODCHIP OR SHREDDED HARDWOOD MULCH (AS NOTED) TO EACH PLANTING SITE (SEE DETAIL SHOWN ON THIS PLAN).
- GROUND COVER ESTABLISHMENT: THE REMAINING DISTURBED AREA BETWEEN SEEDLING PLANTING SITES SHALL BE SEEDED AND STABILIZED WITH WHITE CLOVER SEED AT THE RATE OF 5 LBS/ACRE.
- MOWING: NO MOWING SHALL BE ALLOWED IN ANY PLANTING AREA.
- SURVIVAL CHECK FOR BOND RELEASE: THE SEEDLING PLANTING IS TO BE CHECKED AT THE END OF EACH YEAR FOR FOUR YEARS TO ASSURE THAT NO LESS THAN 75% OF THE ORIGINAL PLANTED QUANTITY SURVIVES. IF THE MINIMUM NUMBER HAS NOT BEEN PROVIDED THE AREA MUST BE SUPPLEMENTED WITH ADDITIONAL SEEDLINGS TO REACH THE REQUIRED NUMBER AT TIME OF PLANTING.
- SOURCE OF SEEDLINGS: STATE NAME, ADDRESS, AND PHONE NUMBER OF NURSERY OR SUPPLIER.



Plant Schedule				
Quan.	Latin Name	Common Name	Size	Cond.
Site Stocking Area - 1 (0.02 Acre @ 300/1 Acre = 6 Trees)				
3	Acer rubrum	Red Maple	1" Cal.	5-7 Gal. +
3	Ilex opaca	American Holly	3-4' Ht.	5-7 Gal. +
Site Stocking Area - 2 (0.12 Acre @ 300/1 Acre = 36 Trees)				
7	Pinus virginiana	Virginia Pine	3-4' Ht.	5-7 Gal. +
7	Quercus velutina	Black Oak	1" Cal.	5-7 Gal. +
7	Sassafras albidum	Sassafras	1" Cal.	5-7 Gal. +
7	Liquidambar styraciflua	Sweetgum	1" Cal.	5-7 Gal. +
8	Nyssa sylvatica	Black Gum	1" Cal.	5-7 Gal. +
Site Stocking Area - 3 (0.07 Acre @ 300/1 Acre = 21 Trees)				
7	Pinus virginiana	Virginia Pine	3-4' Ht.	5-7 Gal. +
7	Quercus velutina	Black Oak	1" Cal.	5-7 Gal. +
7	Liquidambar styraciflua	Sweetgum	1" Cal.	5-7 Gal. +
Site Stocking Area - 4 (0.24 Acre @ 300/1 Acre = 72 Trees)				
12	Acer rubrum	Red Maple	1" Cal.	5-7 Gal. +
12	Ilex opaca	American Holly	3-4' Ht.	5-7 Gal. +
12	Nyssa sylvatica	Black Gum	1" Cal.	5-7 Gal. +
12	Pinus virginiana	Virginia Pine	3-4' Ht.	5-7 Gal. +
12	Quercus velutina	Black Oak	1" Cal.	5-7 Gal. +
12	Sassafras albidum	Sassafras	1" Cal.	5-7 Gal. +
Site Stocking Area - 5 (0.01 Acre @ 300/1 Acre = 3 Trees)				
1	Acer rubrum	Red Maple	1" Cal.	5-7 Gal. +
1	Ilex opaca	American Holly	3-4' Ht.	5-7 Gal. +
1	Nyssa sylvatica	Black Gum	1" Cal.	5-7 Gal. +
Site Stocking Area - 6 (0.32 Acre @ 300/1 Acre = 96 Trees)				
16	Acer rubrum	Red Maple	1" Cal.	5-7 Gal. +
16	Ilex opaca	American Holly	3-4' Ht.	5-7 Gal. +
16	Liquidambar styraciflua	Sweetgum	1" Cal.	5-7 Gal. +
16	Nyssa sylvatica	Black Gum	1" Cal.	5-7 Gal. +
16	Quercus velutina	Black Oak	1" Cal.	5-7 Gal. +
16	Sassafras albidum	Sassafras	1" Cal.	5-7 Gal. +

Prince George's County Planning Department, M-NCPPC				
Environmental Planning Section				
TYPE 2 TREE CONSERVATION PLAN APPROVAL				
TCP1 - 081-93				
Approved by	Date	DRD #	Reason for Revision	
00 JPM	10/14/1993			
01 JPM	03/07/1996			
02 Kim Finch	4/16/2018			
03				
04				
05				
06				
07				
08				

QUALIFIED PROFESSIONAL CERTIFICATION

TO THE BEST OF MY ABILITY AND KNOWLEDGE THIS PLAN COMPLIES WITH THE CURRENT REQUIREMENTS OF SUBTITLE 25 AND THE WOODLAND AND WILDLIFE CONSERVATION TECHNICAL MANUAL.

SIGNED: DATE: 1-18-18

CPJ & ASSOCIATES, INC. 1751 ELTON ROAD, SUITE 300, SILVER SPRING, MD 20903 PHONE: 301-434-7000 EMAIL: ESTURM@CPJA.COM

UPDATES/REVISIONS :

MISS UTILITY

Call "Miss Utility" at 1-800-257-7777, 72 hours prior to the start of work. The excavator must notify all public utility companies with underground facilities in the area of proposed excavation and have those facilities located by the utility companies prior to commencing excavation.

The Maryland-National Capital Park and Planning Commission

Prince George's County Department of Parks and Recreation
6600 Kenilworth Avenue
Riverdale, Maryland 20737
(301) 699-2441
Contact: Francis Kang

TCP II
TREE CONSERVATION NOTES AND DETAILS

SANDY HILL PARK
BOWIE (14th) ELECTION DISTRICT
PRINCE GEORGE'S COUNTY, MARYLAND

CPJ Charles P. Johnson & Associates, Inc.
Civil and Environmental Engineers • Planners • Landscape Architects • Surveyors
1751 Elton Rd., Ste. 300 Silver Spring, MD 20903 301-434-7000 Fax: 301-434-9394
www.cpja.com • Silver Spring, MD • Gaithersburg, MD • Annapolis, MD • College Park, MD • Frederick, MD • Fairfax, VA

CLIENT: MNCPPC DEPARTMENT OF PARKS AND RECREATION
6600 KENILWORTH AVENUE
RIVERDALE, MARYLAND 20737
TELEPHONE: (301) 699-2441
CONTACT: FRANCIS KANG

TAX MAP/WSSC: N/A
SHEET: 17 OF 103
DESIGN: KTG, EJS
DRAFT: ADG
DATE: FEB., 2017
SCALE: AS SHOWN

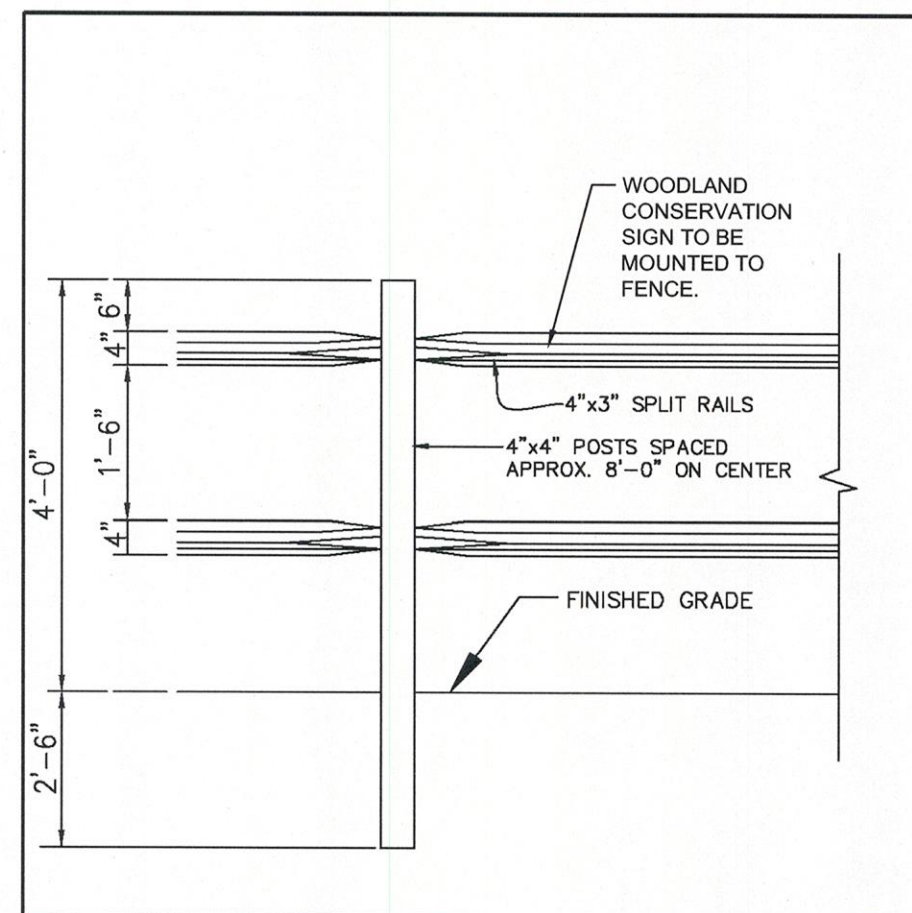
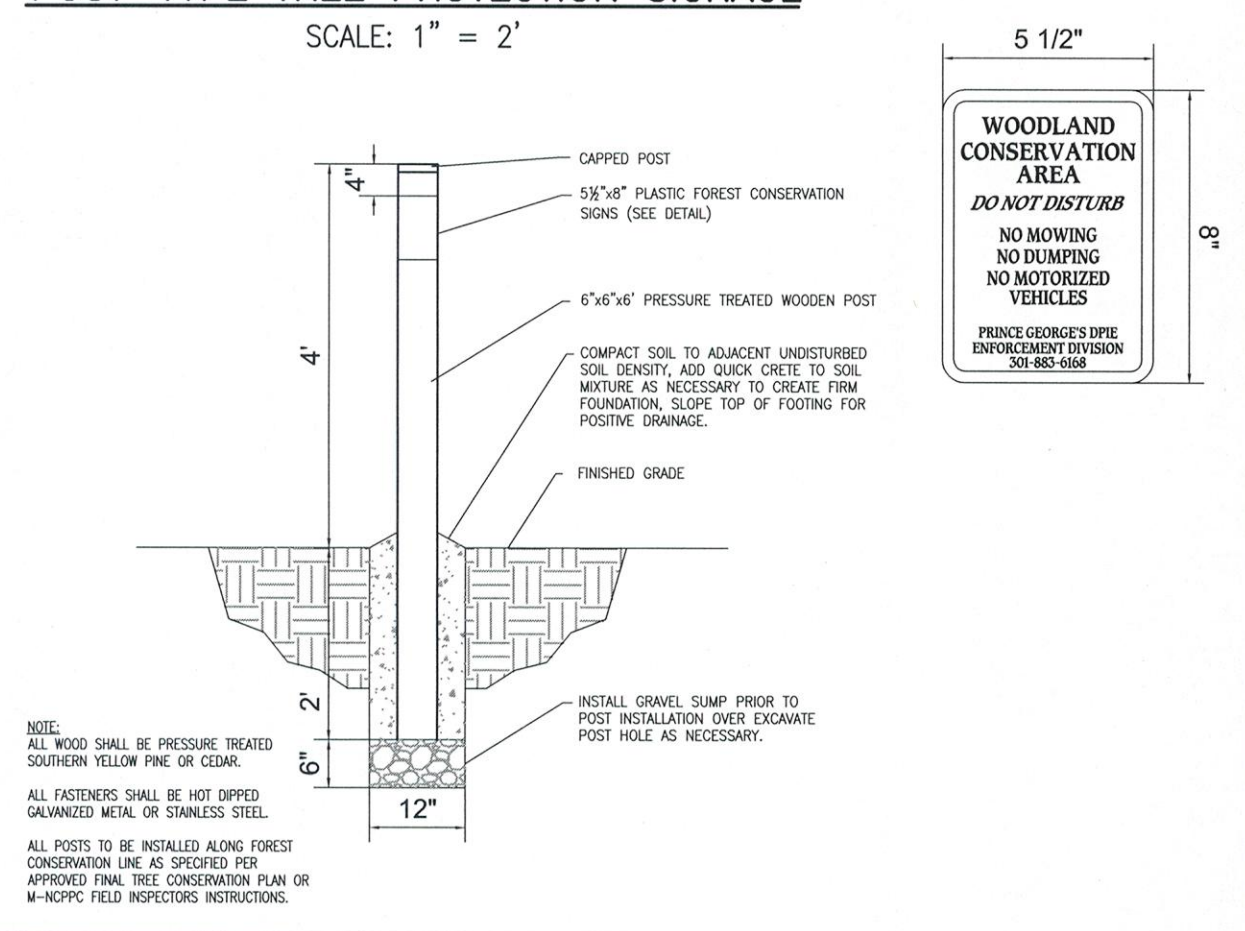
SITE PLAN NO.: N/A
TCP-7
FILE NO.: 41-242-222

COPYRIGHT © LATEST DATE HEREON CHARLES P. JOHNSON & ASSOCIATES, INC. ALL RIGHTS RESERVED. UNAUTHORIZED USE OR REPRODUCTION IS PROHIBITED.

1. REFORESTATION FENCING AND SIGNAGE SHALL REMAIN IN PLACE IN ACCORDANCE WITH THE APPROVED TYPE 2 TREE CONSERVATION PLAN.

2. REFORESTATION AREAS SHALL NOT BE MOWED; HOWEVER, THE MANAGEMENT OF COMPETING VEGETATION AND REMOVAL OF NOXIOUS, INVASIVE, AND NON-NATIVE VEGETATION AROUND INDIVIDUAL TREES IS ACCEPTABLE.

SCALE: 1" = 2'



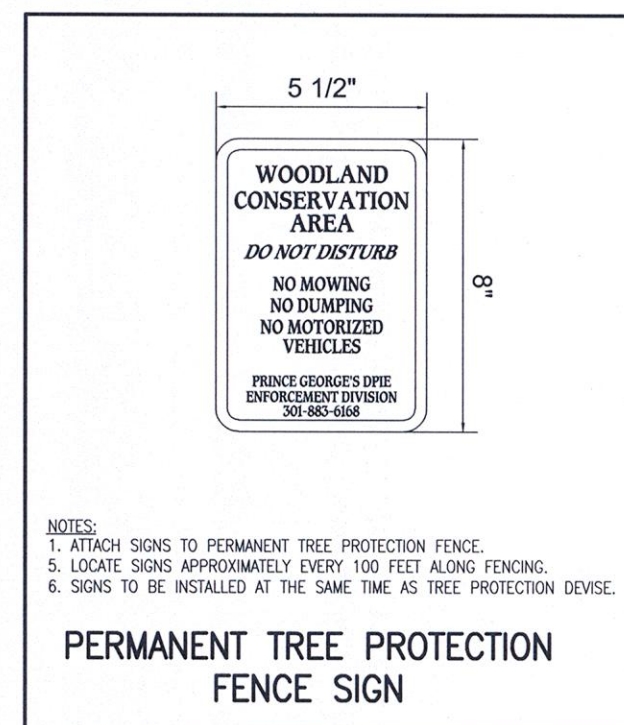
NOTES:

1. POSTS SHALL STAND PLUMB.
2. RAILS SHALL BE HUNG WITH UNIFORM HEIGHT AND SPACING.
3. REFORESTATION SIGNS TO BE ATTACHED TO WOOD POSTS EVERY 100 FEET..
4. TOP OF SIGN TO BE FLUSH WITH TOP OF WOOD POST.
5. SIGNS TO BE ATTACHED USING 2 GALVANIZED WOOD SCREWS EACH WITH A GALVANIZED WASHER.

PERMANENT (SPLIT RAIL) TREE PROTECTION FENCE
FOR REFORESTATION AREAS (TPP)

August 2010

A-4, DET-9



FOUR-YEAR MANAGEMENT PLAN FOR RE/AFFORESTATION AREAS

FIELD CHECK THE RE/AFFORESTATION AREA ACCORDING TO THE FOLLOWING SCHEDULE:

- YEAR 1: SITE PREPARATION AND TREE PLANTING
SURVIVAL CHECK ONCE ANNUALLY (SEPTEMBER-NOVEMBER) (SEE NOTE 2)
WATERING IS NEEDED (2 X MONTH)
CONTROL OF UNDESIRABLE VEGETATION AS NEEDED (1X IN JUNE AND 1 X IN SEPTEMBER MIN.)
- YEARS 2-3: REINFORCEMENT PLANTING IS NEEDED (SEE NOTE 2)
SURVIVAL CHECK ONCE ANNUALLY (SEPTEMBER-NOVEMBER)
CONTROL OF UNDESIRABLE VEGETATION AS NEEDED (1X IN MAY AND 1 X IN AUGUST MIN.)
- YEAR 4: REINFORCEMENT PLANTING IF NEEDED, (SEE NOTE 2)
SURVIVAL CHECK (SEPTEMBER-NOVEMBER)
1. SURVIVAL CHECK: CHECK PLANTED STOCK AGAINST PLANT LIST (OR AS-BUILT) BY WALKING THE SITE AND TAKING INVENTORY. PLANTS MUST SHOW VITALITY. SUBMIT FIELD DATA FORMS (CONDITION CHECK SHEETS) TO OWNER AFTER EACH INSPECTION. REMOVE ALL DEAD PLANTS.
 2. REINFORCEMENT PLANTING: REPLACE DEAD OR MISSING PLANTS IN SUFFICIENT QUANTITY TO BRING THE TOTAL NUMBER OF LIVE PLANTS TO AT LEAST 75% OF THE NUMBER ORIGINALLY PLANTED. IF A PARTICULAR SPECIES SUFFERS UNUSUALLY HIGH MORTALITY, REPLACE WITH AN ALTERNATIVE PLANT TYPE.
 3. MISCELLANEOUS: FERTILIZATION OR WATERING DURING YEARS 1 THROUGH 3 WILL BE DONE ON AN AS NEEDED BASIS. SPECIAL RETURN OPERATIONS OR RECOMMENDATIONS WILL BE CONDUCTED ON AN AS NEEDED BASIS.

POST DEVELOPMENT NOTE

WHEN WOODLANDS AND/OR SPECIMEN, HISTORIC, OR CHAMPION TREES ARE TO REMAIN:

1. IF THE DEVELOPER OR BUILDER NO LONGER HAS AN INTEREST IN THE PROPERTY AND THE NEW OWNER DESIRES TO REMOVE A HAZARDOUS TREE OR PORTION THEREOF, THE NEW OWNER SHALL OBTAIN A WRITTEN STATEMENT FROM A CERTIFIED ARBORIST OR LICENSED TREE EXPERT IDENTIFYING THE HAZARDOUS CONDITION AND THE PROPOSED CORRECTIVE MEASURES PRIOR TO HAVING THE WORK CONDUCTED. AFTER PROPER DOCUMENTATION HAS BEEN COMPLETED PER THE HANDOUT "GUIDANCE FOR PRICE GRACE'S COUNTY PROPERTY OWNERS, PRESERVATION OF WOODLAND CONSERVATION AREAS", THE ARBORIST OR TREE EXPERT MAY THEN REMOVE THE TREE. THE STUMP SHALL BE CUT AS CLOSE TO THE GROUND AS POSSIBLE AND LEFT IN PLACE. THE REMOVAL OR GRINDING OF THE STUMPS IN THE WOODLAND CONSERVATION AREA IS NOT PERMITTED.

IF A TREE OR PORTIONS THEREOF ARE IN IMMINENT DANGER OF STRIKING A STRUCTURE, PARKING AREA, OR OTHER HIGH USE AREA AND MAY RESULT IN PERSONAL INJURY OR PROPERTY DAMAGE THEN THE CERTIFICATION IS NOT REQUIRED AND THE PERMITEE SHALL TAKE CORRECTIVE ACTION IMMEDIATELY. THE CONDITION OF THE AREA SHALL BE FULLY DOCUMENTED THROUGH PHOTOGRAPHS PRIOR TO CORRECTIVE ACTION BEING TAKEN. THE PHOTOS SHALL BE SUBMITTED TO THE INSPECTOR FOR DOCUMENTATION OF THE DAMAGE.

TREE WORK TO BE COMPLETED WITHIN A ROAD RIGHT-OF-WAY REQUIRES A PERMIT FROM THE MARYLAND DEPARTMENT OF NATURAL RESOURCES UNLESS THE TREE REMOVAL IS SHOWN WITHIN THE APPROVED LIMITS OF DISTURBANCE ON A TCP2. THE WORK IS REQUIRED TO BE CONDUCTED BY A LICENSED TREE EXPERT.

2. THE REMOVAL OF NOXIOUS, INVASIVE, AND NON-NATIVE PLANT SPECIES FROM ANY WOODLAND PRESERVATION AREA SHALL BE DONE WITH THE USE OF HAND-HELD EQUIPMENT ONLY (PRUNERS OR A CHAIN SAW). THESE PLANTS MAY BE CUT NEAR THE GROUND AND MATERIAL LESS THAN TWO INCHES DIAMETER MAY BE REMOVED FROM THE AREA AND DISPOSED OF APPROPRIATELY. ALL MATERIAL FROM THESE NOXIOUS, INVASIVE, AND NON-NATIVE PLANTS GREATER THAN TWO (2) INCHES DIAMETER SHALL BE CUT TO ALLOW CONTACT WITH THE GROUND, THUS ENCOURAGING DECOMPOSITION.
3. THE USE OF BROADCAST SPRAYING OF HERBICIDES IS NOT PERMITTED. HOWEVER, THE USE OF HERBICIDES TO DISCOURAGE RE-SPROUTING OF INVASIVE, NOXIOUS, OR NON-NATIVE PLANTS IS PERMITTED IF DONE AS AN APPLICATION OF THE CHEMICAL DIRECTLY TO THE STUMP IMMEDIATELY FOLLOWING CUTTING OF PLANT TOPS. THE USE OF ANY HERBICIDE SHALL BE DONE IN ACCORDANCE WITH THE LABEL INSTRUCTIONS.
4. THE USE OF CHAINSAWS IS EXTREMELY DANGEROUS AND SHOULD NOT BE CONDUCTED WITH POORLY MAINTAINED EQUIPMENT, WITHOUT SAFETY EQUIPMENT, OR BY INDIVIDUALS NOT TRAINED IN THE USE OF THIS EQUIPMENT FOR THE PRUNING AND/OR CUTTING OF TREES.

TCP II
TREE CONSERVATION NOTES AND DETAILS

SANDY HILL PARK
BOWIE (14th) ELECTION DISTRICT
PRINCE GEORGE'S COUNTY, MARYLAND

CPI Charles P. Johnson & Associates, Inc.
Associates
Civil and Environmental Engineers • Planners • Landscape Architects • Surveyors
1751 Elton Rd., Ste. 300 Silver Spring, MD 20903 301-434-7000 Fax: 301-434-9394
www.cpija.com • Silver Spring, MD • Gaithersburg, MD • Annapolis, MD • College Park, MD • Frederick, MD • Fairfax, VA

CLIENT: MANITPC DEPARTMENT OF PARKS AND RECREATION 6600 KENILWORTH AVENUE EVANSTON, ILL. 60201-3073 TELEPHONE: (708) 699-2441 CONTACT: FRANCIS KANG	TAX MAP/WSSC		SITE PLAN NO.	
	N/A		N/A	
	DESIGN	KTG, EJS	SHEET	OF
			18	103
	DRAFT	ADG		
COPYRIGHT © LATEST DATE HEREON CHARLES P. JOHNSON & ASSOCIATES, INC. ALL RIGHTS RESERVED. UNAUTHORIZED USE OR REPRODUCTION IS PROHIBITED.	DATE	FEB. 2017	TCP-8	TCP-8
	SCALE	AS SHOWN	FILE NO:	41-242-222

Prince George's County Planning Department, M-NCPPC
Environmental Planning Section
TYPE 2 TREE CONSERVATION PLAN APPROVAL
TCPH - 081-93

	Approved by	Date	DRD #	Reason for Reversion
00	JPM	10/14/1993		
01	JPM	03/07/1996		
02	Kim Finch	4/16/2018		
03				
04				
05				
06				
07				
08				

QUALIFIED PROFESSIONAL CERTIFICATION

TO THE BEST OF MY ABILITY AND KNOWLEDGE THIS PLAN COMPLIES WITH THE CURRENT REQUIREMENTS OF SUBTITLE 25 AND THE WOODLAND AND WILDLIFE CONSERVATION TECHNICAL MANUAL.

SIGNED: CPJ & ASSOCIATES, INC. DATE: 1-18-78
CPJ & ASSOCIATES, INC. ERIC J. STURM, RLA #755
1751 ELTON ROAD, SUITE 300, SILVER SPRING, MD 20903
PHONE: 301-434-7000 EMAIL: ESTURM@CPJA.COM

MISS UTILITY

Call "Miss Utility" at 1-800-257-7777, 72 hours prior to the start of work.
The excavator must notify all public utility companies with underground facilities in the area of proposed excavation and have those facilities located by the utility companies prior to commencing excavation.

The Maryland-National Capital
Park and Planning Commission

Prince George's County Department
of Parks and Recreation
6600 Kenilworth Avenue
Riverdale, Maryland 20737
(301) 699-2441

Contact: Francis Kang