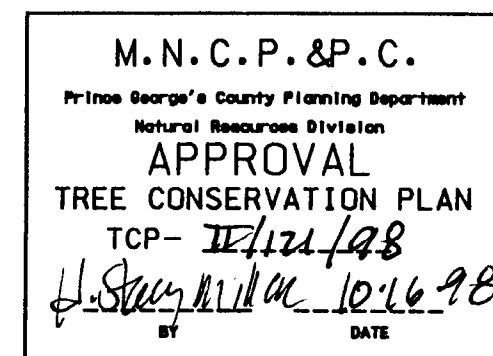


- Notes:
1. If property is to be developed at a latter date, the Tree Conservation Plan shall be revised to reflect said development.
 2. If the area of conservation is to be developed, the conservation easement shall be replaced elsewhere at a 1:1 ratio.
 3. This plan reflects the woodland conservation (off-site portion) required to fulfill the Lakeview TCP responsibilities plus the off-site 2:1 ratio penalties.

Zone:		Mr. Don Fey	
Gross Tract:	104 AC.	Address:	15230 Baden Naylor Rd
Floodplain:	0 (per FEMA)		Brandywine, Md. 20613
Dedicated Land:	0	Phone:	
Net Tract:	104 AC.	Tax Map/Grid/Parcel:	
Permit #:			
Woodland Conservation Calculations:		Net Tract	Floodplain
		(Acres)	(Acres)
Existing Woodland		a. 51.36 AC.	k. 0
WCT (1988 x Net Tract)		b. 51.36 AC.	
Smaller of a. or b.		c. 51.36 AC.	
Woodland above WCT(a - b) if < 0		d. 0	
Smaller of d. or e.		e. 0	
Clearing below WCT(a - b) if < 0		f. 0	
Replacement (f x 0.25)		g. 0	
Afforestation (g x 2.0)		h. 0	
Net Tract x 2 = 51.36		i. 0	
Woodland Conservation Required:		51.36 AC.	
Woodland Conservation Provided:		(Acres)	
Woodland Preservation		44.38 AC. (51.36 - 6.98)	
Reforestation/Replacement		6.98 AC.	
Afforestation			
Area approved for fee-in-lieu		\$0.30 x 43560 = \$	
Off-site Credits		51.36 AC.	
Woodland Conservation Provided		(must equal or exceed item "a" above) and \$	
Additional woodland retained but not part of any requirements:			Acres
Plan Certified by:		Name: Ken Dunn	
		Address: 4407 FORBES BLVD., SUITE B	
		LANHAM, MD. 20706	
		License: MD RLA 1014	

3.49 Acres of Existing Woodland are to be placed in a conservation easement for the benefit of "Lakeview" TCP-11/05/97

3.49 Acres are to be set aside to comply with off-site preservation regulations.



LOIEDERMAN ASSOCIATES INC.
OCT 16 1998
PRINTED



LOIEDERMAN ASSOCIATES, INC.

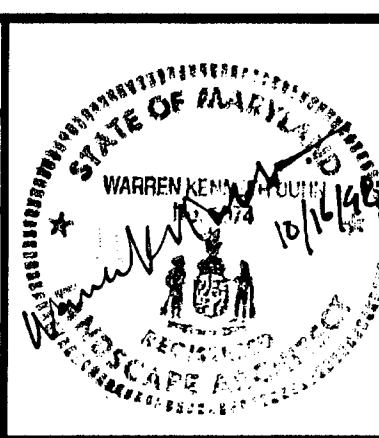
Civil Engineering Land Planning Land Surveying Environmental Studies

1390 Piccard Drive, Rockville, Maryland 20850 301-948-2750 Fax: 301-948-9067
4407 Forbes Boulevard, Lanham, Maryland 20706 301-794-7555 Fax: 301-794-7656
7 North Market Street, Frederick, Maryland 21701 301-696-1240 Fax: 301-831-4865
6E Industrial Park Drive, Waldorf, Maryland 20602 301-870-2166 Fax: 301-870-2884

Internet address: <http://www.loiederman.com>

NO.		REVISIONS	BY	DATE
1		August 1998	WKD	
2		August 1998	WKD	
3		August 1998	WKD	
4		August 1998	WKD	
5		August 1998	WKD	
6		August 1998	WKD	
7		August 1998	WKD	
8		August 1998	WKD	
9		August 1998	WKD	
10		August 1998	WKD	
11		August 1998	WKD	
12		August 1998	WKD	
13		August 1998	WKD	
14		August 1998	WKD	
15		August 1998	WKD	
16		August 1998	WKD	
17		August 1998	WKD	
18		August 1998	WKD	
19		August 1998	WKD	
20		August 1998	WKD	

Page	Grid
Tax Map	Zoning Category
M-NCPPC 200 Sheet	
WSSC 200 Sheet	

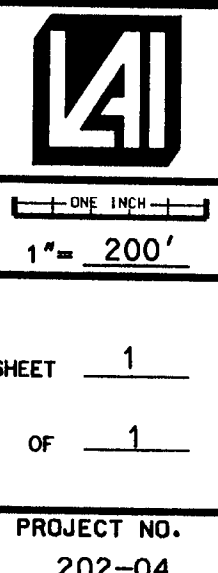


MISS UTILITY NOTE	
INFORMATION CONCERNING EXISTING UNDERGROUND UTILITIES WAS OBTAINED FROM AVAILABLE RECORDS. THE CONTRACTOR MUST DETERMINE THE EXACT LOCATION AND ELEVATION OF ALL EXISTING UTILITIES AND UTILITY CROSSINGS BY DIGGING TEST PITS BY HAND, WELL IN ADVANCE OF THE START OF EXCAVATION. CONTACT "MISS UTILITY" AT 1-800-257-7777, 48 HOURS PRIOR TO THE START OF EXCAVATION. IF CLEARANCES ARE LESS THAN SHOWN ON THIS PLAN OR TWELVE (12) INCHES, WHICHEVER IS LESS, CONTACT THE ENGINEER AND THE UTILITY COMPANY BEFORE PROCEEDING WITH CONSTRUCTION. CLEARANCES LESS THAN NOTED MAY REQUIRE REVISIONS TO THIS PLAN.	
ELECTRONIC FILE DISCLAIMER	
THE INFORMATION CONTAINED HEREON WAS PREPARED AS AN ELECTRONIC CAD FILE BY LOIEDERMAN ASSOCIATES, INC. (LAI). WHILE ALL REASONABLE STEPS HAVE BEEN TAKEN TO ASSURE THE ACCURACY OF THE INFORMATION CONTAINED IN SAID ELECTRONIC FILE, LAI CANNOT GUARANTEE THAT CHANGES AND/OR ALTERATIONS HAVE NOT BEEN MADE, NO RELIANCE ON THE INFORMATION CONTAINED HEREON SHALL BE MADE UNLESS FIRST COMPARED TO A SIGNED ORIGINAL DOCUMENT. LAI ASSUMES NO RESPONSIBILITY AND GRANTS NO WARRANTIES, EXPRESSED OR IMPLIED, CONCERNING THE ACCURACY OF INFORMATION THAT HAS BEEN TRANSMITTED OR RECEIVED BY COMPUTER OR OTHER ELECTRONIC MEANS. IF VERIFICATION OF THE INFORMATION CONTAINED HEREON OR IN THE ELECTRONIC FILE USED TO CREATE THIS DOCUMENT IS NEEDED, CONTACT SHOULD BE MADE DIRECTLY WITH LAI.	

TREE CONSERVATION PLAN - TYPE 2

FEY PROPERTY

ELECTION DISTRICT
PRINCE GEORGE'S COUNTY, MARYLAND



SHEET 1
OF 1
PROJECT NO.
202-04