

Hazardous Waste Site Remediation for Non-Superfund Projects			
Zone: 3-3	Owner: CENTEX HOMES		
Gross Tract: 81.8 Acres	Address: 5840 Galtier Road		
Proposed: 2.00 Acres	Calverton, Maryland 20617		
Prev. Dedicated Land: 2.00 Acres	Phone: 410-671-8355		
Net Tract: 81.8 Acres	Tax Map: 144		
Superfund Block/Lot: LAKEVIEW AT BRANDYWINE			
Hazardous Waste Site Remediation			
Existing Hazardous	Net Tract (Acres)	Proposed (Acres)	Off-site (Acres)
ACT (20% x Net Tract)	0.333	0.333	0.333
Smaller of a, or b	0.333	0.333	0.333
Hazardous Waste ACT (a-b) x 1.10	0.476		
Hazardous Waste ACT (a-b) x 1.10	0.476	0.333	0.333
Smaller of a, or b	0.476		
Clearing below ACT (a-b) x 1.10	0.524		
Replacement: (7 x 0.25)	1.75		
(g x 2.0)	0.22		
Afforestation: (if app. to a)	0.22		
Net tract x 2-a) or (net tract x 3-a) x 1.10	0.22		
Hazardous Waste Required: (a-b) x 1.10	0.22		
Hazardous Waste Remediation			
Hazardous Waste Remediation (Acres)	0.22		
Hazardous Waste Remediation/Replacement	0.22		
Afforestation	0.22		
Area approved for fee-in-lieu	0.22 (to 30/4560) x 1.10		
Off-site Credits	0.22		
Off-site Mitigation Provided	0.22		
Hazardous Waste Remediation (Must equal or exceed item "c" above)	0.22 and 1.10		
Additional Hazardous Waste Remediation not part of any requirements: 0.22 acres			
Breakover point: (a/b 21/4) x 0.22	0.22		
Plan Certified by:	Name: Megan Reiser		
	Address: 5840 Galtier Road, Suite 200		
	Calverton, MD 20617		
	License: Qualified Professional		
ACT is the Hazardous Waste Remediation as shown in Part 5 of the Prince George's County Hazardous Waste Remediation and Tree Preservation Policy Document.			
2A) entries - parentheses are notations for notes.			

Note: Should the Master Planned Right of Way be utilized, then the preservation located within the Right of Way shall be located at an off-site treebank area.

CLEARING AREAS (CA)	
No.	AREA (AC)
1	127.00
TOTAL	127.00

PRESERVATION AREAS (PA)	
No.	AREA (AC)
1	4.18
2	0.12
3	1.35
4	0.12
5	1.58
6	4.84
7	4.20
8	3.17
9	17.48
10	14.47
11	0.33
12	0.42
TOTAL	57.16

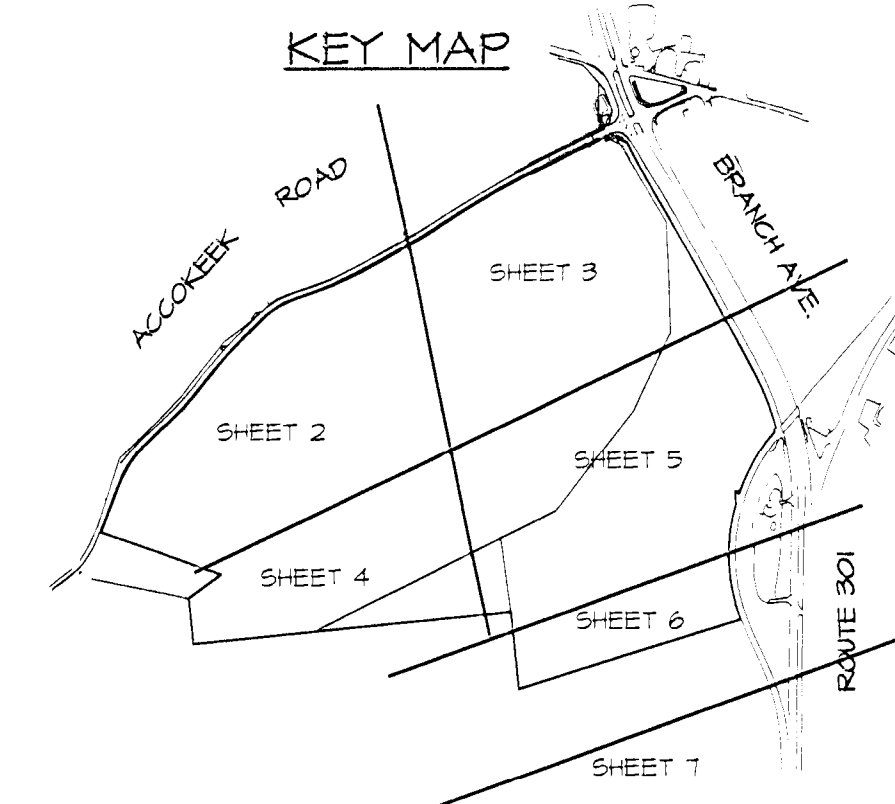
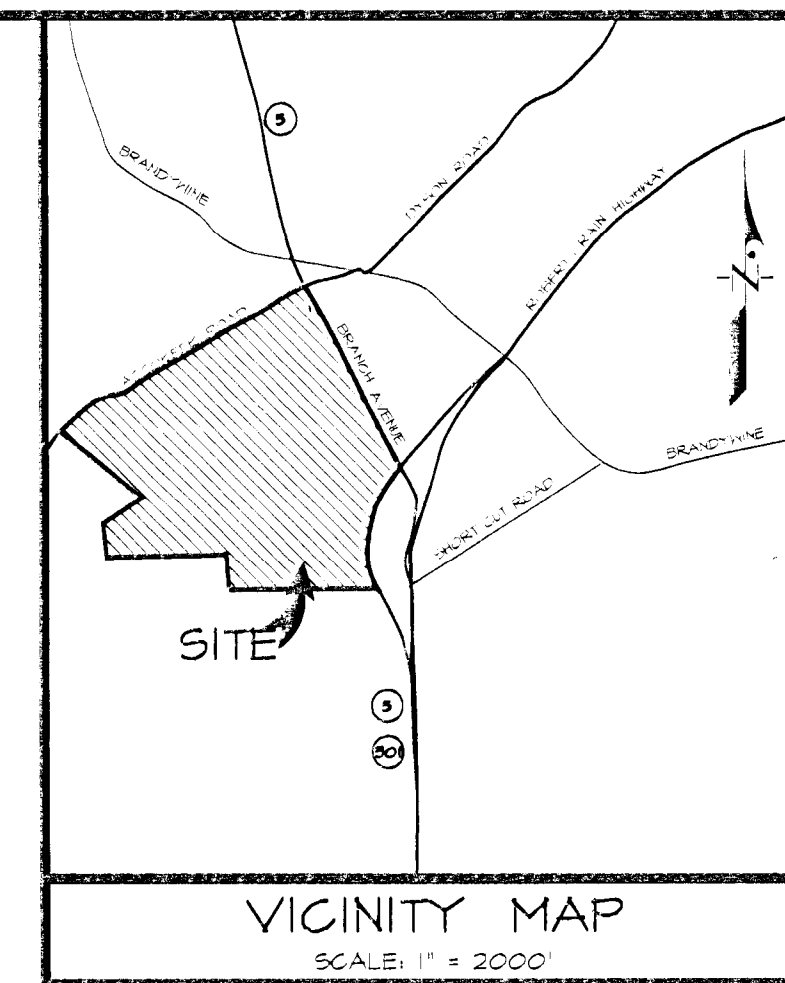
REFORESTATION AREAS (RA)	
No.	AREA (AC)
1	1.83
2	0.38
3	0.60
4	1.16
5	0.47
6	0.44
TOTAL	4.93

OFF-SITE CLEARING AREA (CA-OFF)	
No.	AREA (AC)
1	0.04
2	0.55
3	0.01
4	0.75
TOTAL	1.35

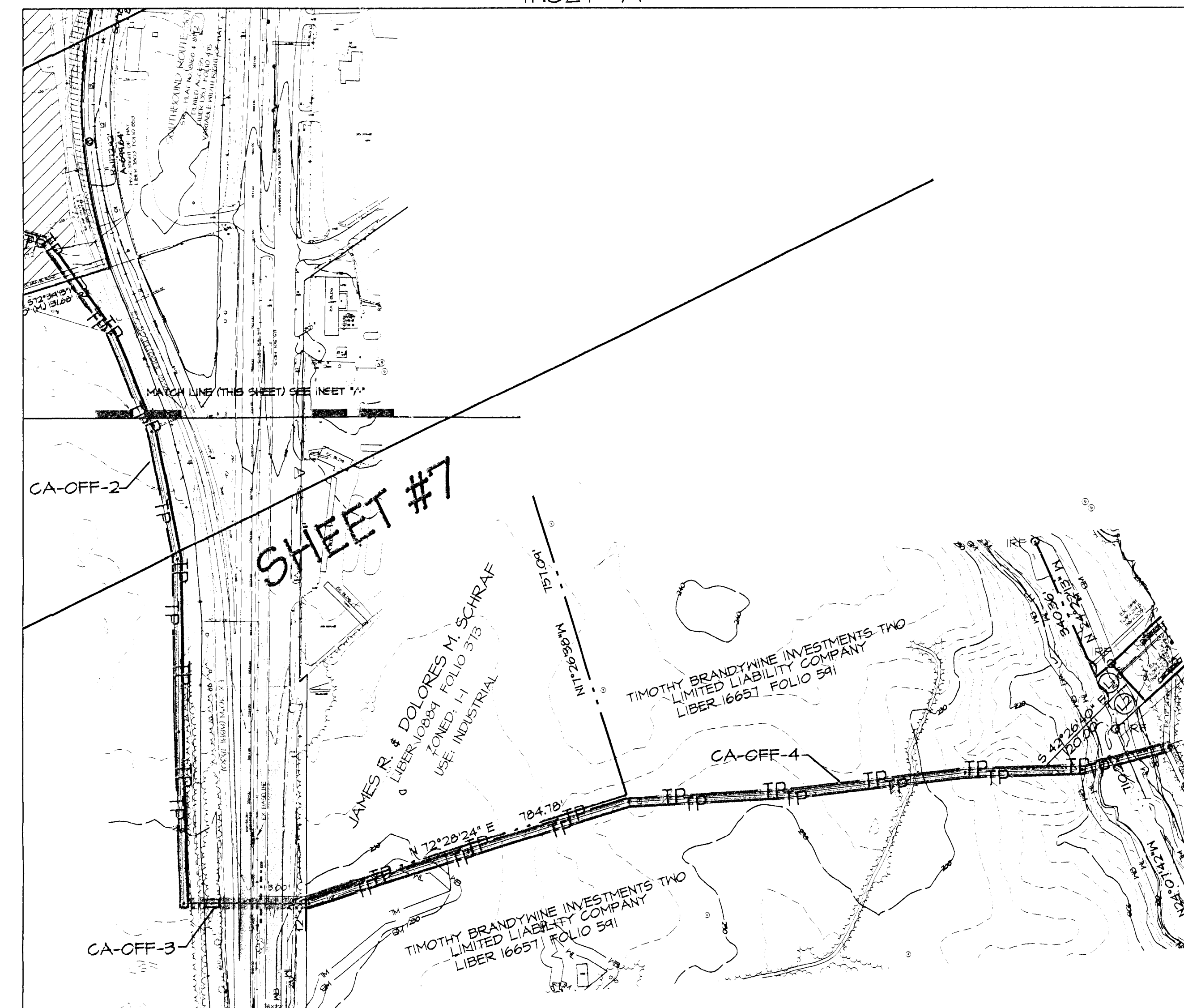
M-NCPPC APPROVALS			
PROJECT NAME: LAKEVIEW AT BRANDYWINE			
PROJECT NUMBER: DSP-05046			
For Conditions of Approval on Site Plan Cover Sheet or Approval Sheet			
Approval or Revision #	Approval Date	Reviewer's Initials	Certification Date
1	3/30/06	E.E.	4/4/06

SPECIMEN TREE SUMMARY			
NUMBER	SPECIES	DIAMETER (in.)	STATUS
1	American Beech	30"	To Be Removed

LEGEND	
PROPERTY BOUNDARY	---
EX. CONTOUR	---
PROP. CONTOUR	---
EX. TREELINE	---
LIMITS OF DISTURBANCE	---
EX. FLOODPLAIN	---
EX. WETLAND BUFFER (25')	---
SPECIMEN TREE WITH CRITICAL ROOT ZONE	○
TREE PROTECTION FENCE	TP
TREE PROTECTION SIGNAGE	■
CLEARING AREA	□
PRESERVATION AREA	▨
REFORESTATION AREA	▩



INSET "A"



M-NCPPC Prince George's County Planning Department Natural Resources Division	
APPROVAL	
TREE CONSERVATION PLAN	
TCP II / 185 / 04	
Approved by	DATE
JL R	3/24/06
01	
02	
03	
04	
05	
06	

APPLICANTS  
Centex Homes  
DC Metro Division-Maryland Operations  
5840 Galtier Drive  
Gathersburg MD 20617-404

APPLICANTS  
Accokeek Brandywine Invest. One & Two  
2124 Priest Branch Drive  
Crofton MD 21114  
and  
Centex Homes  
5840 Galtier Drive  
Gathersburg MD 20617-404

## OVERALL TREE CONSERVATION PLAN TYPE - II FOR LAKEVIEW AT BRANDYWINE

LOTS 1-37, 83-88 AND PARCELS A-C AND PARCEL H, BLOCK A;  
LOTS 1-17 AND PARCEL A, BLOCK B; LOTS 1-23, BLOCK C;  
LOTS 1-25, BLOCK D; PARCEL A, BLOCK E;  
LOTS 2-13 AND PARCEL A, BLOCK F;  
LOTS 1-26, BLOCK H; AND LOTS 1-21, BLOCK I

BRANDYWINE DISTRICT No. II  
PRINCE GEORGE'S COUNTY, MARYLAND

TCP SHEET 1 OF 8

W550 200' SHEET SERIES 218 & 219 550 & 1  
APD MAP BK LOCATION 32 B, C & 2, 11, 12 & 13

DATE	REVISIONS DESCRIPTION	DATE	REVISIONS DESCRIPTION
3/7/06	Rev. sheets 1 & 2 of 8 to show picnic parking area	3/7/06	Rev. sheets 1 & 2 of 8 to show picnic parking area
11/21/04	Revised per MNCPPC Env. Planning meeting dated 11/2/04	11/21/04	Revised per MNCPPC Env. Planning meeting dated 11/2/04
10/24/05	Revised per MNCPPC Env. Planning comments dated 4/1/05	10/24/05	Revised per MNCPPC Env. Planning comments dated 4/1/05
6/24/05	Revised for Limited Detailed Site Plan and Rough Grading	6/24/05	Revised for Limited Detailed Site Plan and Rough Grading
DATE	REVISIONS DESCRIPTION	DATE	REVISIONS DESCRIPTION

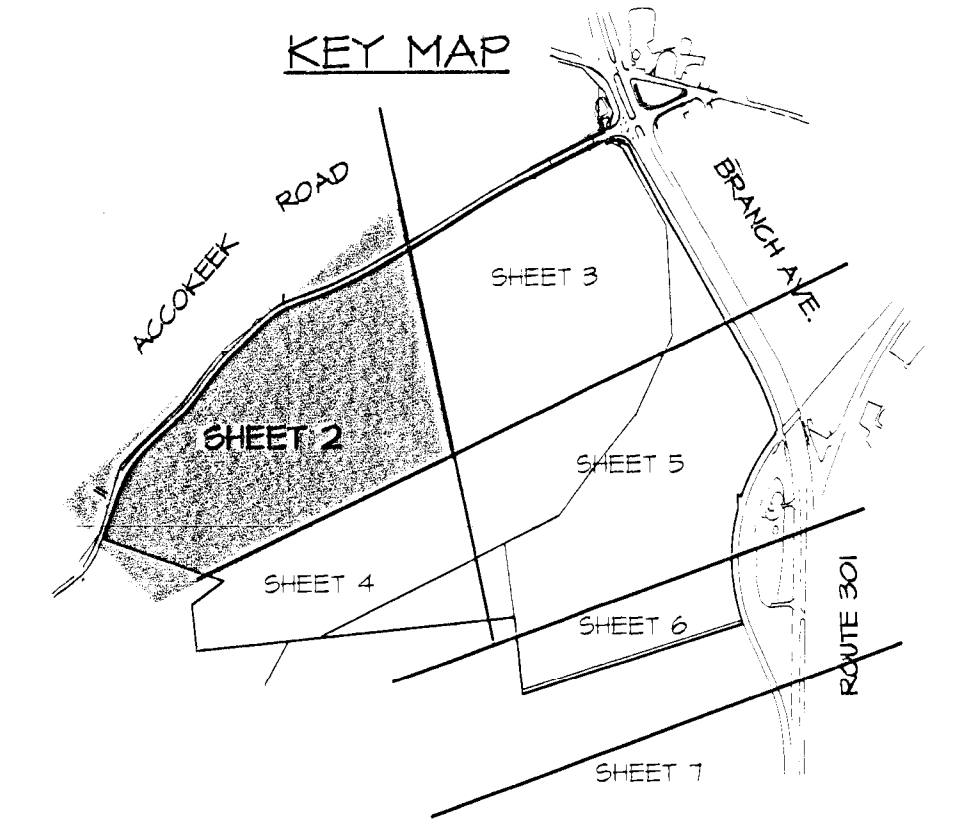
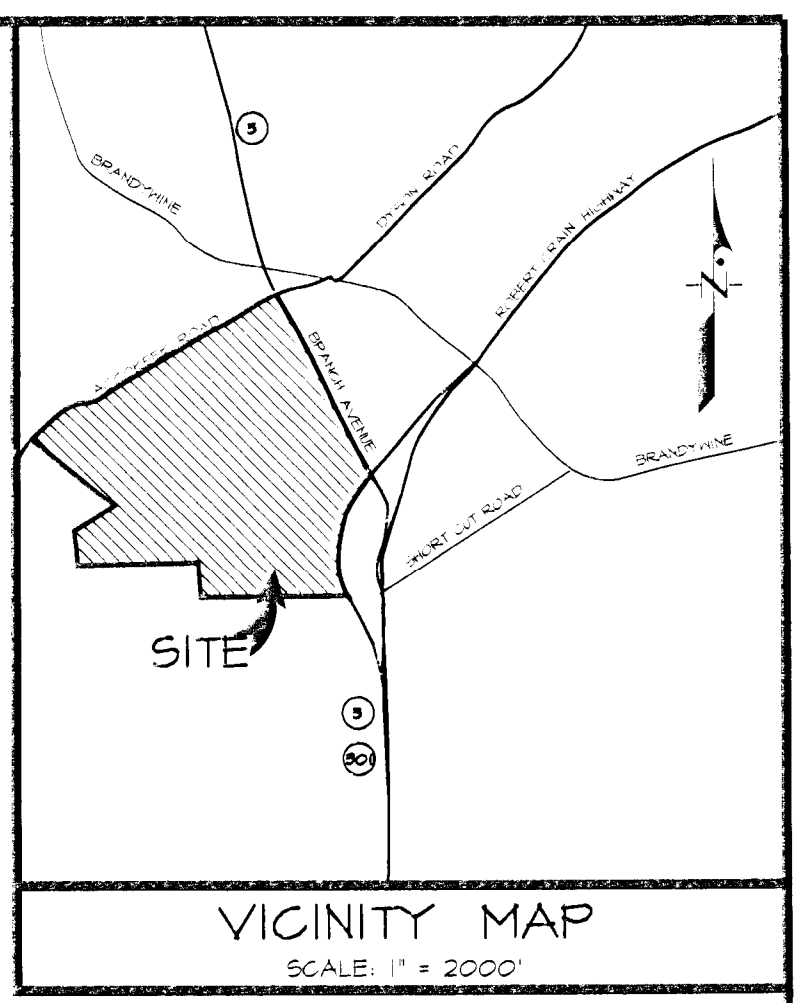
1721 WOODMERE ROAD, SUITE 200 MITCHELLVILLE, MARYLAND 20701	1721 WOODMERE ROAD, SUITE 200 MITCHELLVILLE, MARYLAND 20701
TELEPHONE (301) 430-0000	TELEPHONE (301) 430-0000
BEN DYER ASSOCIATES, INC.	BEN DYER ASSOCIATES, INC.
Engineers / Surveyors / Planners	Engineers / Surveyors / Planners
COPYRIGHT © 2004 BEN DYER ASSOCIATES, INC.	COPYRIGHT © 2004 BEN DYER ASSOCIATES, INC.
DRAWN BY: MRS. J. D. DYER	DRAWN BY: MRS. J. D. DYER
CHECKED BY: MRS. J. D. DYER	CHECKED BY: MRS. J. D. DYER
SCALE: 1"=200'	SCALE: 1"=200'
DATE: MARCH 2004	DATE: MARCH 2004
DWG. NO.: 54-018-2	DWG. NO.: 54-018-2

DSP 00046





- LEGEND**
- PROPERTY BOUNDARY
  - EX. CONTOUR
  - PROP. CONTOUR
  - EX. TREELINE
  - LIMITS OF DISTURBANCE
  - EX. FLOODPLAIN
  - NONT-DAL WETLAND
  - EX. WETLAND BUFFER (25')
  - SPEC MEN TREE WITH CRITICAL ROOT ZONE
  - TREE PROTECTION FENCE
  - TREE PROTECTION SIGNAGE
  - CLEARING AREA
  - PRESERVATION AREA
  - REPLENTISHMENT AREA



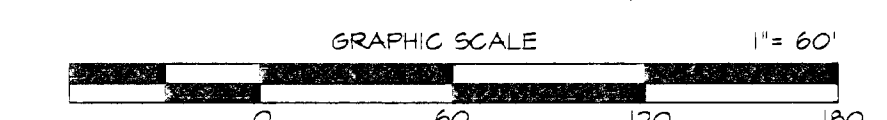
M-NCPPC Prince George's County Planning Department Natural Resources Division	
APPROVAL	
TREE CONSERVATION PLAN	
TCP II / 185 / 04	
Approved by	DATE
J. L. Stoltz	12/8/05
01	
02	
03	
04	
05	
06	

M-NCPPC APPROVALS			
PROJECT NAME: LAKEVIEW AT BRANDYWINE			
PROJECT NUMBER: DSP-05046			
For Conditions of Approval see Site Plan Cover Sheet or Approval Sheet			
Revisions Listed Below Apply to This Sheet			
Approval or Revision #	Approval Date	Reviewer's Initials	Certification Date
	3.30.06	E.E.	4.4.06

**TREE CONSERVATION PLAN TYPE - II  
FOR  
LAKEVIEW AT BRANDYWINE**

LOTS 1-37, 83-88 AND PARCELS A-C AND PARCEL H, BLOCK A;  
LOTS 1-17 AND PARCEL A, BLOCK B; LOTS 1-23, BLOCK C;  
LOTS 1-25, BLOCK D; PARCEL A, BLOCK E;  
LOTS 2-13 AND PARCEL A, BLOCK F;  
LOTS 1-26, BLOCK H; AND LOTS 1-21, BLOCK I

BRANDYWINE DISTRICT No. II  
PRINCE GEORGE'S COUNTY, MARYLAND



APPROVED  
114  
45

**CONTRACTOR**  
Centex Homes  
DC Metro Division-Maryland Operations  
5590 Galters Drive  
Gaithersburg, MD 20878-404

**APPLICANTS**  
Accokeek Brandywine Invest. One & Two  
2124 Priest Branch Drive  
Crofton, MD 21114

**DESIGNER**  
Centex Homes  
5590 Galters Drive  
Gaithersburg, MD 20878-404

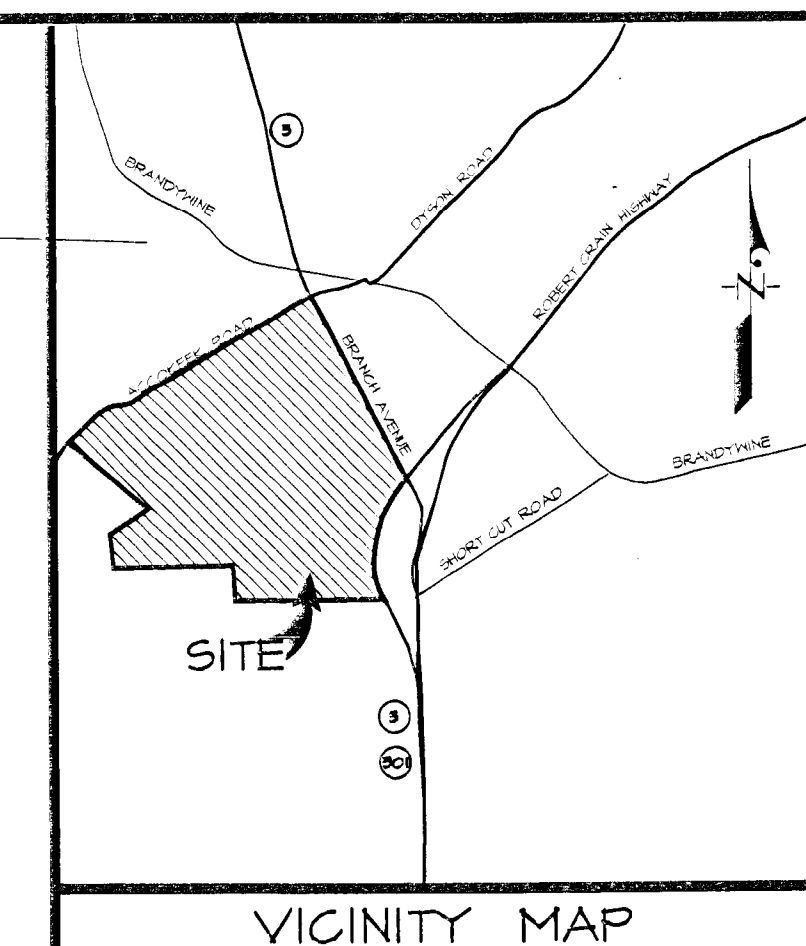
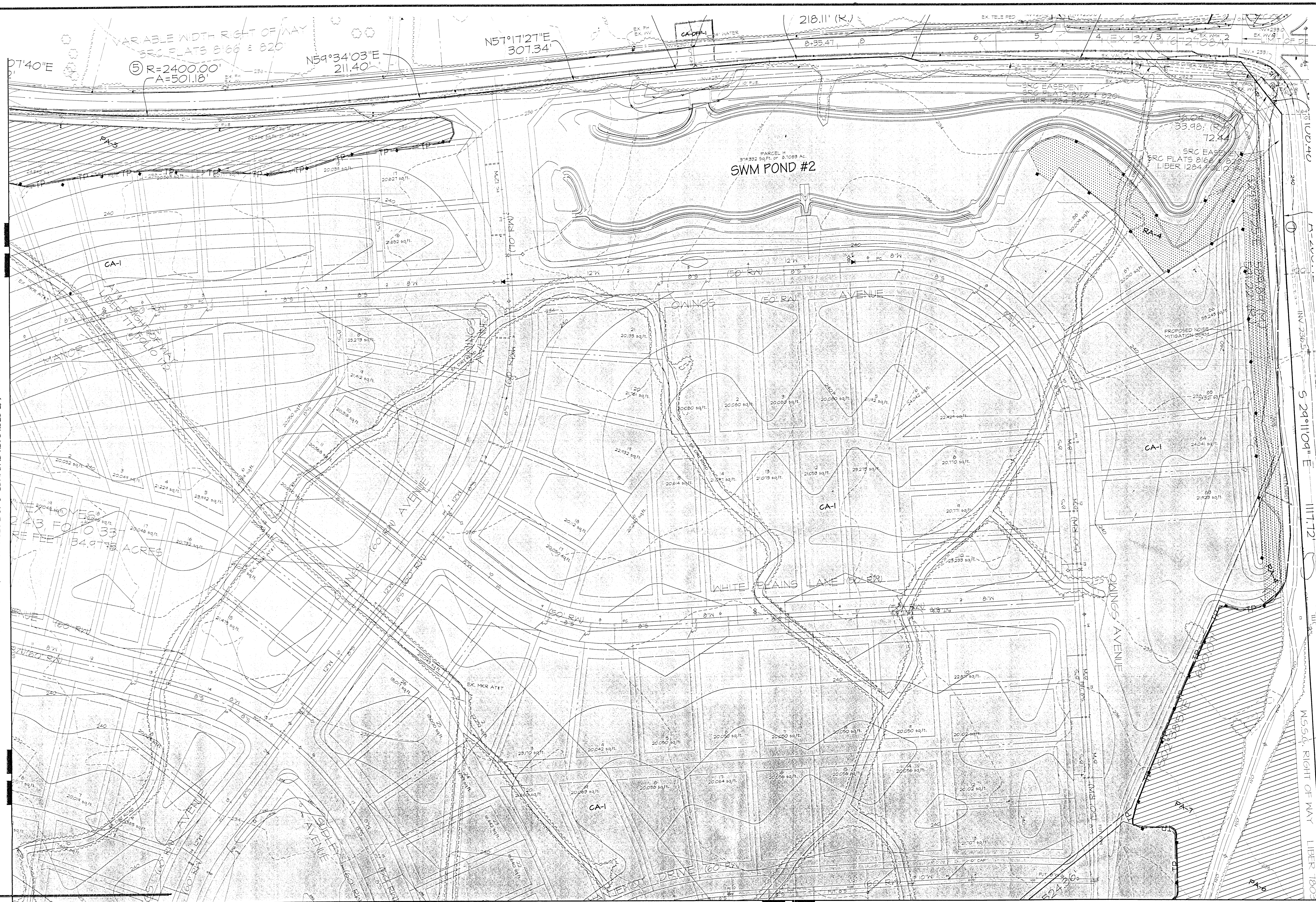
**TCP SHEET 2 OF 8**  
M55C 200' SHEET SERIES 210 x 214 56 6 x 7  
ADC MAP BK LOCATION 32 B, C & D II, 12 & 13

3/7/06	Rev. sheets 1 & 2 of 8 to show plantings parking area	MR	1721 WOODBINE ROAD, SUITE 200 MTFORDVILLE, MARYLAND 20711
11/21/05	Revised for MNCPPC Env. Planning meeting dated 11/2/05	MR	
6/24/05	Revised for MNCPPC Env. Planning comments dated 5/1/05	MR	
6/24/05	Revised for Limited Detailed Site Plan and Rough Grading	MR	
2/10/05	REVISIONS PER P650C	MR	
DATE	DESCRIPTION	BY	DATE
	REVISIONS		

**Ben Dyer Associates, Inc.**  
Engineers / Surveyors / Planners  
1301 430-2000  
COPYRIGHT © 2004 BEN DYER ASSOCIATES, INC.  
DRAWN BY: DESIGNED BY: CHECKED BY: J-47013  
SCALE: 1"=60'  
DATE: NOVEMBER 2004  
54-020-2



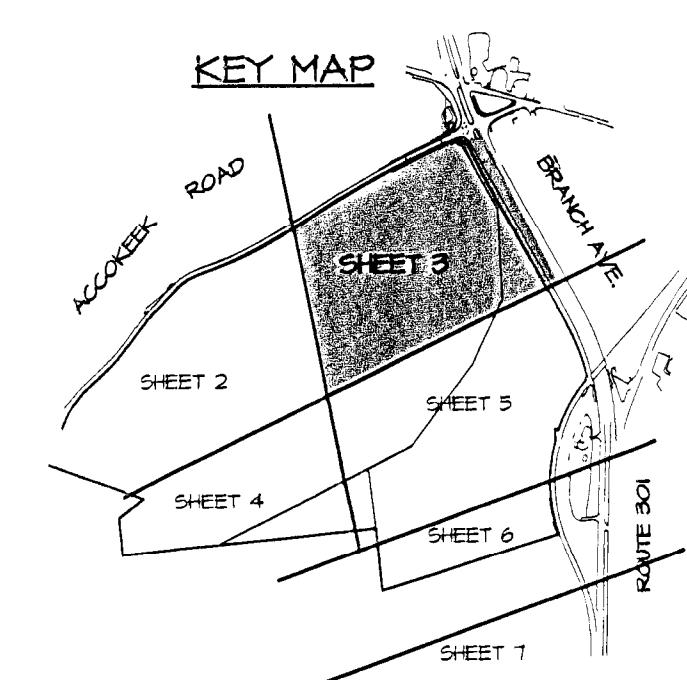
MATCH LINE (SEE TOP SHEET 2 OF 8 BDAI DWG NO. 54.020-2)



- LEGEND**
- PROPERTY BOUNDARY
  - EX. CONTOUR
  - PROP. CONTOUR
  - EX. TREELINE
  - LIMITS OF DISTURBANCE
  - EX. FLOODPLAIN
  - NONTIDAL WETLAND
  - EX. WETLAND BUFFER (25')
  - SPECIMEN TREE WITH CRITICAL ROOT ZONE
  - TREE PROTECTION FENCE
  - TREE PROTECTION SIGNAGE
  - CLEARING AREA
  - PRESERVATION AREA
  - REFORESTATION AREA

M-NCPPC APPROVALS			
PROJECT NAME: LAKEVIEW AT BRANDYWINE			
PROJECT NUMBER: DSP-05946			
For Conditions of Approval use Site Plan Cover Sheet or Approval Sheet. Revisions Listed Below Apply to This Sheet.			
Approval or Revision #	Approval Date	Reviewer's Initials	Certification Date
	3.30.06	E.E.	4.4.06

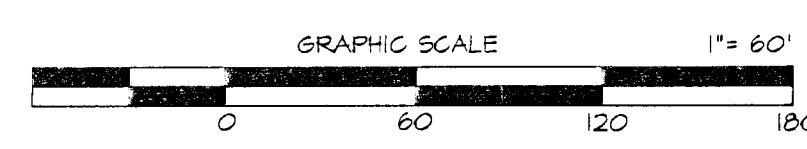
MATCH LINE (SEE TOP SHEET 5 OF 8 BDAI DWG NO. 54.023-2)



M-NCPPC		
Prince George's County Planning Department Natural Resources Division		
APPROVAL		
TREE CONSERVATION PLAN		
TOP II / 165 / 04		
APPROVED BY	DATE	
J. L. Stone	12/8/05	
01		
02		
03		
04		
05		
06		

**APPLICANTS**  
Accokeek Homes  
DC Metro Division-Maryland Operations  
15840 Gaiters Drive  
Gaithersburg, MD 20877-1404

**APPLICANTS**  
Accokeek Brandywine Invest. One & Two  
224 Privet Branch Drive  
Crofton, MD 21114  
and  
Centex Homes  
15840 Gaiters Drive  
Gaithersburg, MD 20877-1404



TCP SHEET 3 OF 8  
N80C 200' SHEET SERIES 218 & 214 SE 6 & 7  
ADG MAP BK LOCATION 52 B, C & D II, 12 & 13

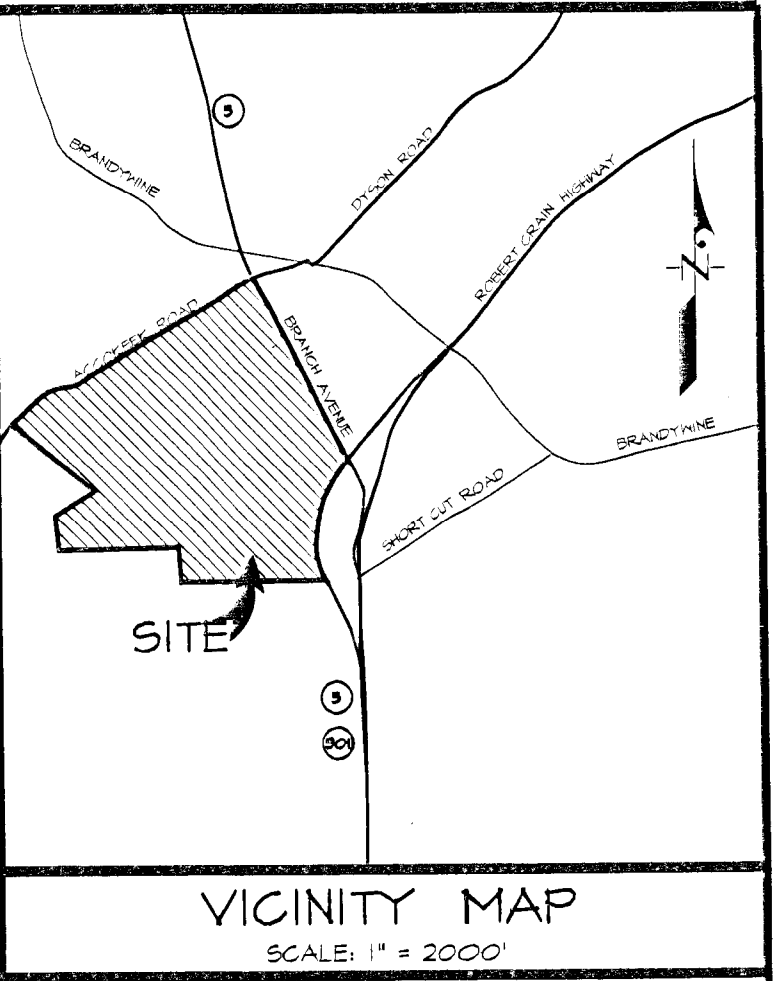
**TREE CONSERVATION PLAN TYPE - II  
FOR  
LAKEVIEW AT BRANDYWINE**

LOTS 1-37, 83-88 AND PARCELS A-C AND PARCEL H, BLOCK A;  
LOTS 1-17 AND PARCEL A, BLOCK B; LOTS 1-23, BLOCK C;  
LOTS 1-25, BLOCK D; PARCEL A, BLOCK E;  
LOTS 2-13 AND PARCEL A, BLOCK F;  
LOTS 1-26, BLOCK H; AND LOTS 1-21, BLOCK I  
BRANDYWINE DISTRICT NO. II  
PRINCE GEORGE'S COUNTY, MARYLAND

DATE		DESCRIPTION		BY		DATE	
11/21/05		Revised for MNCPPC Env. Planning meeting dated 11/21/05	MR			11/21/05	
10/24/05		Revised for MNCPPC Env. Planning meeting dated 9/1/05	MR			10/24/05	
6/24/05		Revised for Limited Detailed Site Plan and Rough Grading	MR			6/24/05	
2/10/05		REVISIONS PER P550D				2/10/05	
Megan Reiser		Megan Reiser		Megan Reiser		Megan Reiser	
Qualified Professional		Qualified Professional		Qualified Professional		Qualified Professional	
COMAR 08.19.05.01		COMAR 08.19.05.01		COMAR 08.19.05.01		COMAR 08.19.05.01	

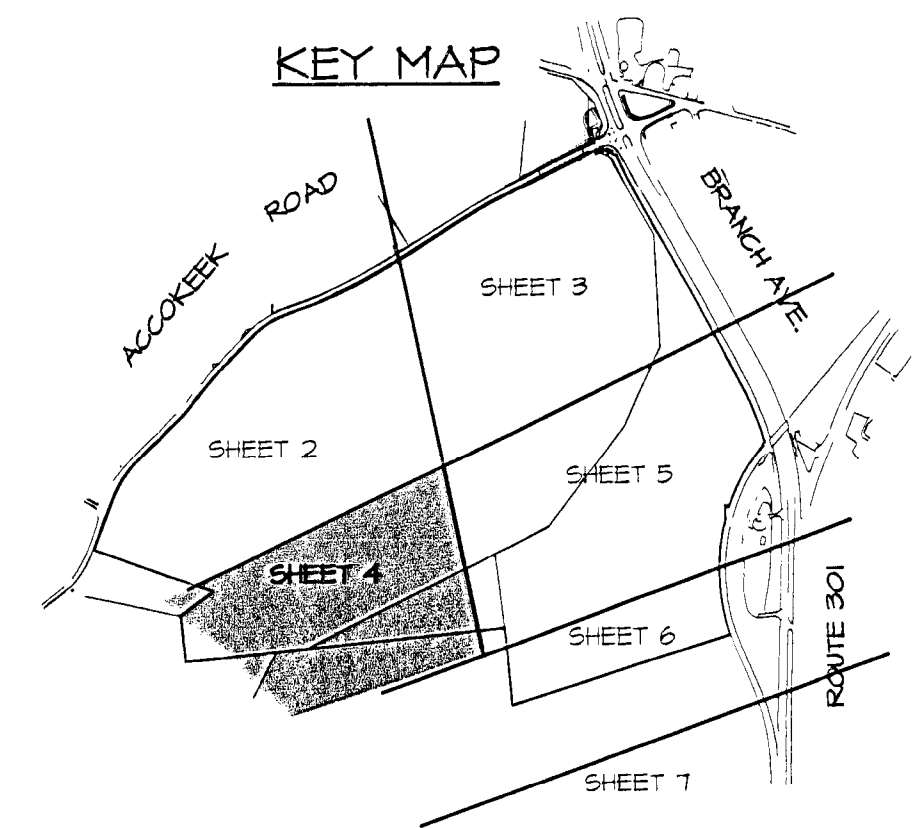


MATCH LINE (SEE TCP SHEET 2 OF 8 BDAI DWG NO. 54.020-Z)



LEGEND	
PROPERTY BOUNDARY	---
EX. CONTOUR	---
PROP. CONTOUR	---
EX. TREELINE	---
LIMITS OF DISTURBANCE	---
EX. FLOODPLAIN	---
NONTIDAL WETLAND	---
EX. WETLAND BUFFER (25')	---
SPECIMEN TREE WITH CRITICAL ROOT ZONE	○
TREE PROTECTION FENCE	TP
TREE PROTECTION SIGNAGE	■
CLEARING AREA	▨
PRESERVATION AREA	▨
REFORESTATION AREA	▨

M-NCPPC APPROVALS			
PROJECT NAME: LAKEVIEW AT BRANDYWINE			
PROJECT NUMBER: DSP-05046			
For Conditions of Approval see Site Plan Cover Sheet or Approval Sheet Revisions Listed Below Apply to This Sheet			
Approval of Revision #	Approval Date	Reviewer's Initials	Certification Date
	3/30/06	E.E.	4/4/06

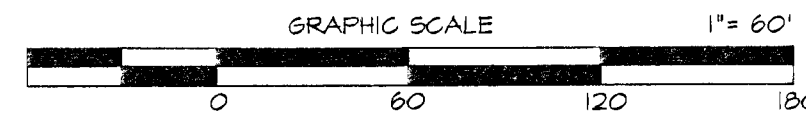


M-NCPPC	
Prince George's County Planning Department	
Natural Resources Division	
APPROVAL	
TREE CONSERVATION PLAN	
TCP II / 185 / 04	
Approved by:	DATE
J. L. Stapp	2/8/05
01	J. L. Stapp
02	
03	
04	
05	
06	

## TREE CONSERVATION PLAN TYPE - II FOR LAKEVIEW AT BRANDYWINE

LOTS 1-37, 83-88 AND PARCELS A-C AND PARCEL H, BLOCK A;  
LOTS 1-17 AND PARCEL A, BLOCK B; LOTS 1-23, BLOCK C;  
LOTS 1-25, BLOCK D; PARCEL A, BLOCK E;  
LOTS 2-13 AND PARCEL A, BLOCK F;  
LOTS 1-26, BLOCK H; AND LOTS 1-21, BLOCK I

BRANDYWINE DISTRICT No. II  
PRINCE GEORGE'S COUNTY, MARYLAND



APPROVED  
PLAN

TCP SHEET 4 OF 8

MSSC 200' SHEET SERIES 218 & 219 SE 6 & 7  
APP. MAP BE LOCATION 27.9 & 21.1 12.1 3

DATE	12/1/05	1721 WOODMOORE ROAD, SUITE 200 MITCHELLVILLE, MARYLAND 20721	ENGINEERS / SURVEYORS / PLANNERS
1/2/05	Revised for MCRPC Env. Planning meeting dated 11/2/05	HR	TELEPHONE (301) 430-2000
1/24/05	Revised for MCRPC Env. Planning meeting dated 1/1/05	HR	COPYRIGHT © 2004 BEN DYER ASSOCIATES, INC.
6/24/05	Revised for Limited Detailed Site Plan and Rough Grading	HR	BY: BEN DYER ASSOCIATES, INC.
2/10/05	REVISIONS PER P66CD	HR	DATE: J-47013
DATE	DESCRIPTION	BY	DATE
NOVEMBER 2004	REVISIONS	DATE	54.022-Z

OWNERS  
Centex Homes  
DC Metro Division-Maryland Operations  
15840 Gaiter Drive  
Gaithersburg, MD 20878-1404

APPLICANTS  
Accokeek Brandywine Invest. One & Two  
2124 Priest Branch Drive  
Crofton, MD 21114  
and  
Centex Homes  
15840 Gaiter Drive  
Gaithersburg, MD 20878-1404



MATCH LINE (SEE TCP SHEET 3 OF 8 BDAI DWG NO. 54.021-Z)

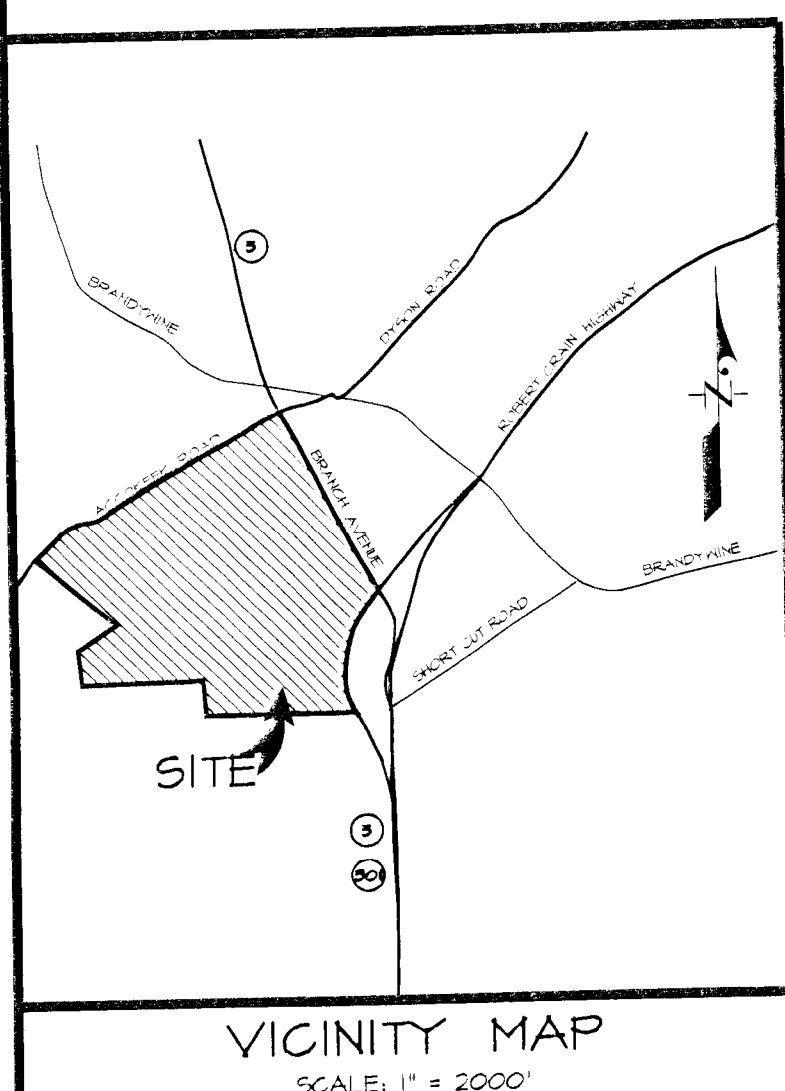
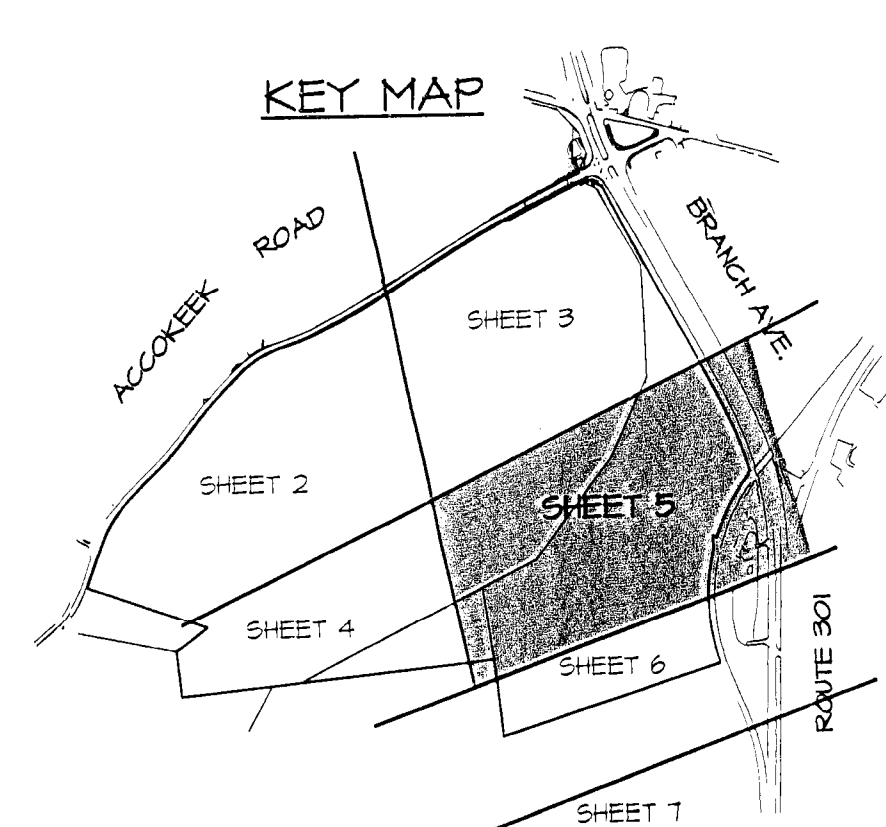
MATCH LINE (SEE TCP SHEET 4 OF 8 BDAI DWG NO. 54.022-Z)

MATCH LINE (SEE TCP SHEET 6 OF 8 BDAI DWG NO. 54.024-Z)

#### LEGEND

- PROPERTY BOUNDARY
- EX. CONTOUR
- PROP. CONTOUR
- EX. TREELINE
- LIMITS OF DISTURBANCE
- EX. FLOODPLAIN
- NONTIDAL WETLAND
- EX. WETLAND BUFFER (25')
- SPECIMEN TREE WITH CRITICAL ROOT ZONE
- TREE PROTECTION FENCE
- TREE PROTECTION SIGNAGE
- CLEARING AREA
- PRESERVATION AREA
- REFORESTATION AREA

#### KEY MAP



VICINITY MAP  
SCALE: 1" = 2000'

M-NCPPC APPROVALS			
PROJECT NAME: LAKEVIEW AT BRANDYWINE			
PROJECT NUMBER: DSP-05046			
For Conditions of Approval see Site Plan Cover Sheet or Approval Sheet			
Approval or Revision #	Approval Date	Reviewer's Initials	Certification Date
1	3.30.06	E.E.	4.4.06

M-NCPPC Prince George's County Planning Department Natural Resources Division	
TREE CONSERVATION PLAN APPROVAL	
TCP II / 165 / 04	
Approved by	DATE
J.L. BAKER	3/23/06

OWNER  
Centex Homes  
D.C. Metro Division-Maryland Operations  
15040 Gaiter Drive  
Gaithersburg, MD 20877-1404

APPLICANTS  
Accokeek Brandywine Invest. One & Two  
2124 Priest Branch Drive  
Crofton, MD 21114

2004  
Centex Homes  
15040 Gaiter Drive  
Gaithersburg, MD 20877-1404

## TREE CONSERVATION PLAN TYPE - II FOR LAKEVIEW AT BRANDYWINE

LOTS 1-37, 83-88 AND PARCELS A-C AND PARCEL H, BLOCK A;  
LOTS 1-17 AND PARCEL A, BLOCK B; LOTS 1-23, BLOCK C;  
LOTS 1-25, BLOCK D; PARCEL A, BLOCK E;  
LOTS 2-13 AND PARCEL A, BLOCK F;  
LOTS 1-26, BLOCK H; AND LOTS 1-21, BLOCK I

BRANDYWINE DISTRICT No. II  
PRINCE GEORGE'S COUNTY, MARYLAND



APPROVED  
PLAN

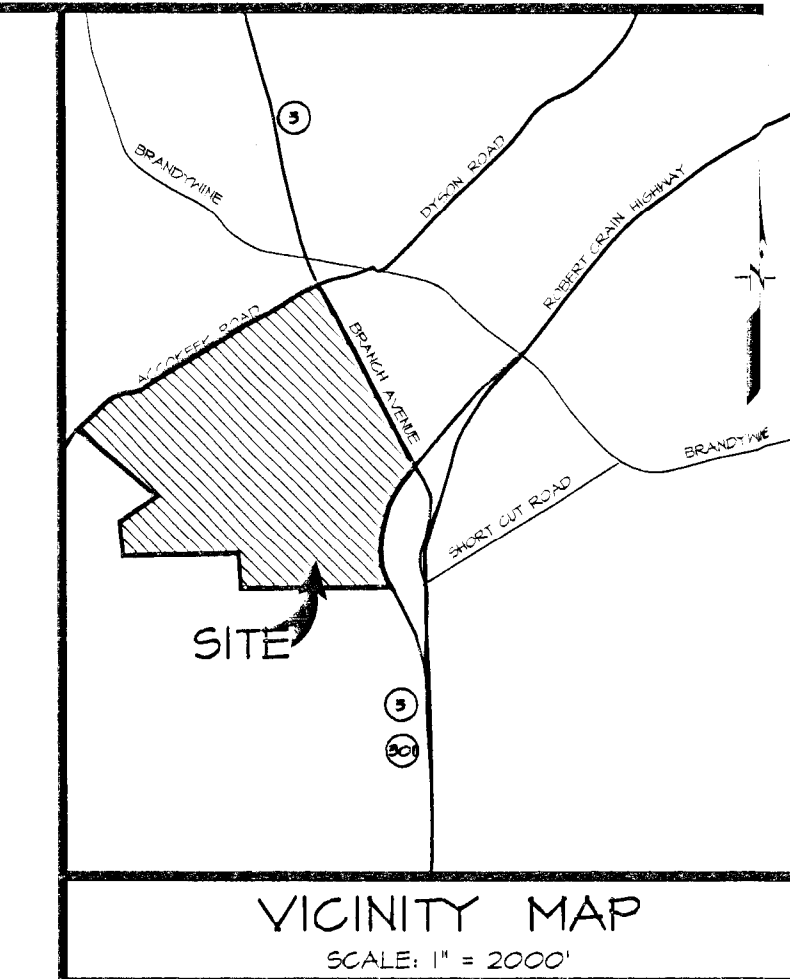
TCP SHEET 5 OF 8

MDC 200' SHEET SERIES 210 & 214 SEE 6 & 7		1121 WOODHURST ROAD, SUITE 200 MITCHELLVILLE, MARYLAND 20701	
DATE		BEN DYER ASSOCIATES, INC.	
12/07/05		Engineers / Surveyors / Planners	
1/21/06		Revised for MDCPRC Env. Planning meeting dated 1/21/06	
10/24/05		Revised for MDCPRC Env. Planning meeting dated 9/1/05	
6/24/05		Revised for Limited Detailed Site Plan and Rough Grading	
2/10/05		REVISIONS PER P0600	
DATE	DESCRIPTION	BY	DATE
12/07/05	REVISIONS	W. R. R.	12/07/05

DSP 04-048



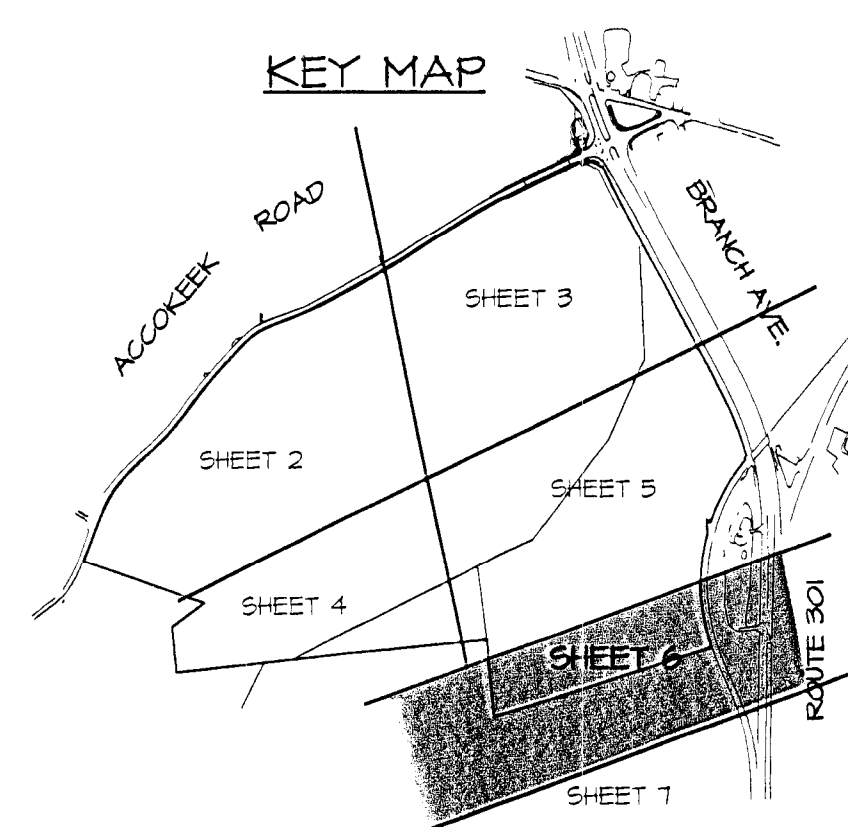
MATCH LINE (SEE TCP SHEET 5 OF 8 BDAI DWG NO. 54.023-Z)



LEGEND	
PROPERTY BOUNDARY	---
EX. CONTOUR	---
PROP. CONTOUR	---
EX. TREELINE	---
LIMITS OF DISTURBANCE	---
EX. FLOODPLAIN	---
NONTIDAL WETLAND	---
EX. WETLAND BUFFER (25')	---
SPECIMEN TREE WITH CRITICAL ROOT ZONE	---
TREE PROTECTION FENCE	---
TREE PROTECTION SIGNAGE	---
CLEARING AREA	---
PRESERVATION AREA	---
REFORESTATION AREA	---

M-NCPPC APPROVALS			
PROJECT NAME: LAKEVIEW AT BRANDYWINE			
PROJECT NUMBER: DSP-05046			
For Conditions of Approval see Site Plan Cover Sheet or Approval Sheet Revisions Listed Below Apply to This Sheet			
Approval or Revision #	Approval Date	Reviewer's Initials	Certification Date
	5/30/06	E.E.	4/4/06

TREE CONSERVATION PLAN TYPE - II  
FOR  
LAKEVIEW AT BRANDYWINE  
LOTS 1-37, 83-88 AND PARCELS A-C AND PARCEL H, BLOCK A;  
LOTS 1-17 AND PARCEL A, BLOCK B; LOTS 1-23, BLOCK C;  
LOTS 1-25, BLOCK D; PARCEL A, BLOCK E;  
LOTS 2-13 AND PARCEL A, BLOCK F;  
LOTS 1-26, BLOCK H; AND LOTS 1-21, BLOCK I  
BRANDYWINE DISTRICT No. II  
PRINCE GEORGE'S COUNTY, MARYLAND



M-NCPPC Prince George's County Planning Department Natural Resources Division	
APPROVAL	
TREE CONSERVATION PLAN	
TCP II / 185 / 04	
Approved by	DATE
JL	5/30/06

APPLICANTS  
Cortrex Homes  
DC Metro Division-Maryland Operations  
15840 Gaiter Drive  
Gaithersburg, MD 20877-1404

APPLICANTS  
Accokeek Brandywine Invest. One & Two  
2124 Priest Branch Drive  
Crofton, MD 21114  
and  
Cortrex Homes  
15840 Gaiter Drive  
Gaithersburg, MD 20877-1404

TCP SHEET 6 OF 8

MDC 200 SHEET SERIES 218 & 214 SE 6 & 7

APPROVED FOR CONSTRUCTION BY BEN DYER ASSOCIATES, INC.

DATE 10/21/05

11/2/05 Revised for MNCPPC Env. Planning meeting dated 11/2/05. MR

10/24/05 Revised for MNCPPC Env. Planning comments dated 9/10/05. MR

8/24/05 Revised for Limited Detailed Site Plan and Rough Grading. MR

2/10/05 REVISIONS PER R56CD

DATE DESCRIPTION BY

REVISIONS

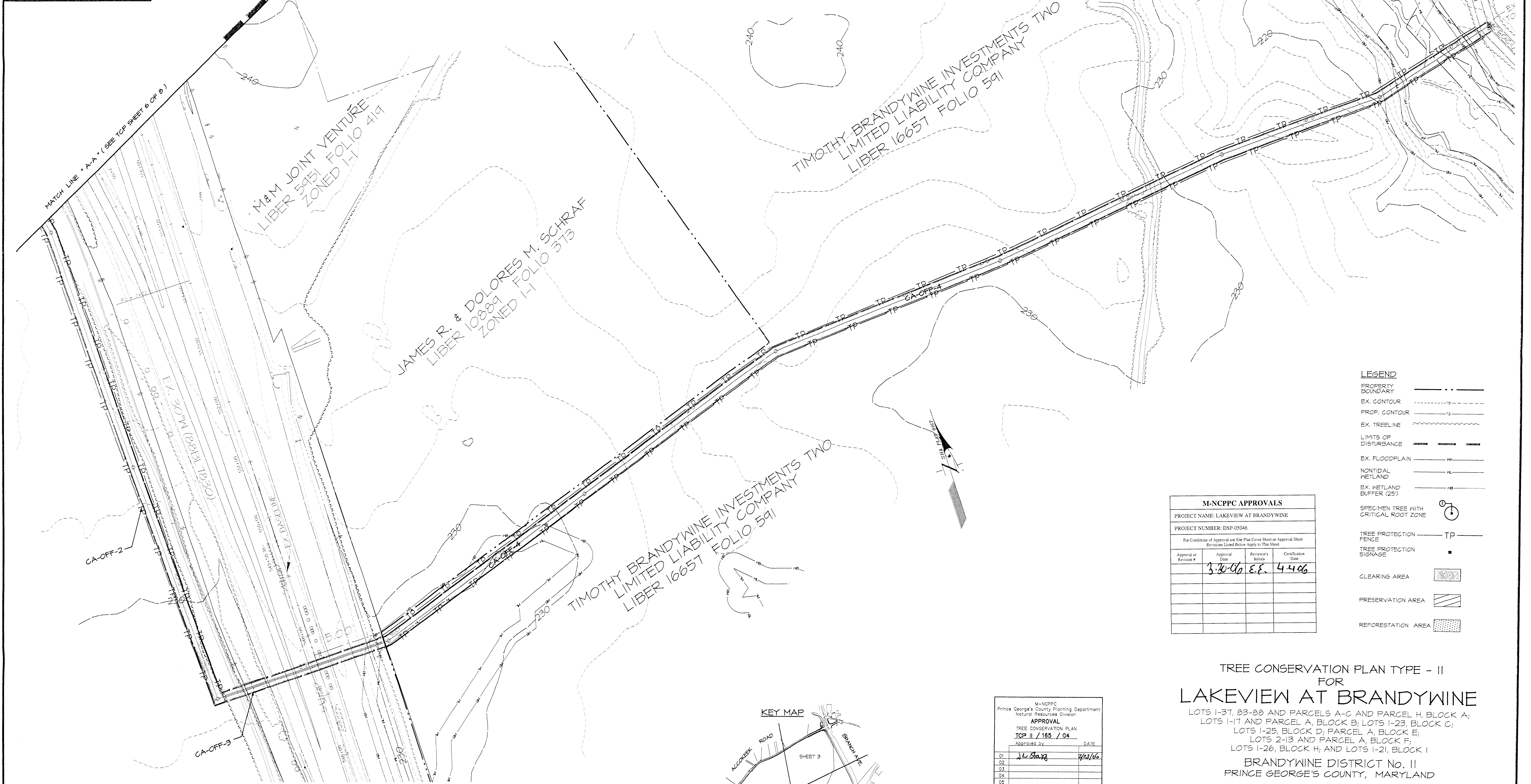
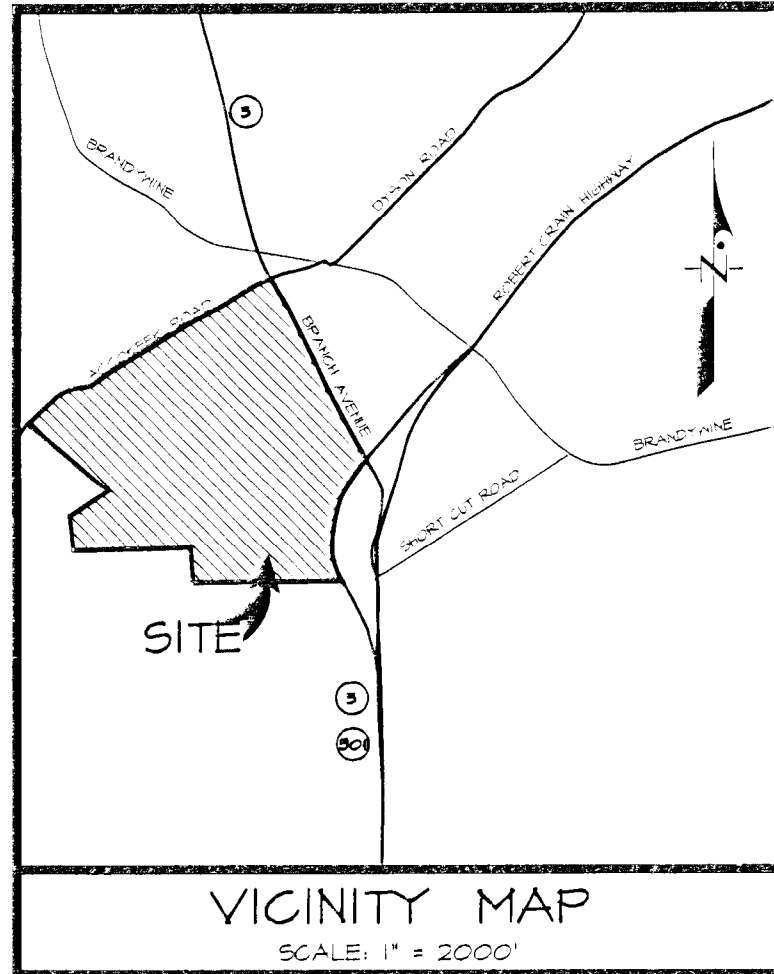
GRAPHIC SCALE 1" = 60'

APPROVED  
PLAN

114  
45

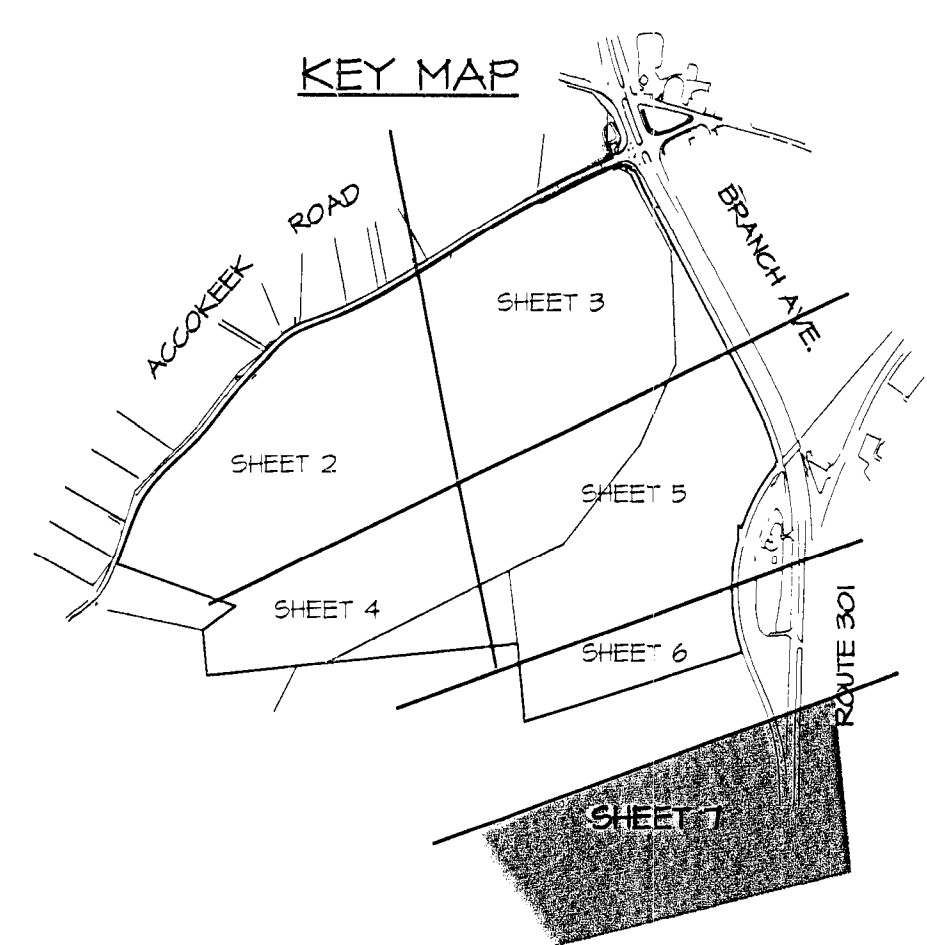
11721 WOODMORE ROAD, SUITE 200 MITCHELLVILLE, MARYLAND 20721 BEN DYER ASSOCIATES, INC. Engineers / Surveyors / Planners TELEPHONE (301) 430-2000 FAX (301) 430-2000 COPYRIGHT © 2004 BEN DYER ASSOCIATES, INC. DRAWN BY: J. REISER CHECKED BY: J. REISER DATE: JUNE 2005 SHEET NO.: 54.024-Z	
--	--





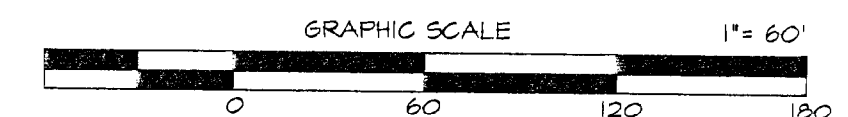
M-NCPPC APPROVALS			
PROJECT NAME: LAKEVIEW AT BRANDYWINE			
PROJECT NUMBER: DSP-05046			
For Conditions of Approval see Site Plan Cover Sheet or Approval Sheet Revisions Listed Below Apply to This Sheet			
Approval or Revision #	Approval Date	Reviewer's Initials	Certification Date
01	3/30/06	E.E.	4/4/06
02			
03			
04			
05			
06			

M-NCPPC APPROVALS			
PROJECT NAME: LAKEVIEW AT BRANDYWINE			
PROJECT NUMBER: DSP-05046			
For Conditions of Approval see Site Plan Cover Sheet or Approval Sheet Revisions Listed Below Apply to This Sheet			
Approval or Revision #	Approval Date	Reviewer's Initials	Certification Date
01	3/30/06	E.E.	4/4/06
02			
03			
04			
05			
06			



M-NCPPC APPROVALS			
PROJECT NAME: LAKEVIEW AT BRANDYWINE			
PROJECT NUMBER: DSP-05046			
For Conditions of Approval see Site Plan Cover Sheet or Approval Sheet Revisions Listed Below Apply to This Sheet			
Approval or Revision #	Approval Date	Reviewer's Initials	Certification Date
01	3/30/06	E.E.	4/4/06
02			
03			
04			
05			
06			

TREE CONSERVATION PLAN TYPE - II  
FOR  
LAKEVIEW AT BRANDYWINE  
LOTS 1-37, 83-88 AND PARCELS A-C AND PARCEL H, BLOCK A;  
LOTS 1-17 AND PARCEL A, BLOCK B; LOTS 1-23, BLOCK C;  
LOTS 1-25, BLOCK D; PARCEL A, BLOCK E;  
LOTS 2-13 AND PARCEL A, BLOCK F;  
LOTS 1-26, BLOCK H; AND LOTS 1-21, BLOCK I  
BRANDYWINE DISTRICT NO. II  
PRINCE GEORGE'S COUNTY, MARYLAND



TCP SHEET 7 OF 8  
M&C 200' SHEET SERIES 210 & 214 SE 6 & 7  
APR 2006 LOCATION 12 11 21 13

M-NCPPC APPROVALS			
PROJECT NAME: LAKEVIEW AT BRANDYWINE			
PROJECT NUMBER: DSP-05046			
For Conditions of Approval see Site Plan Cover Sheet or Approval Sheet Revisions Listed Below Apply to This Sheet			
Approval or Revision #	Approval Date	Reviewer's Initials	Certification Date
01	3/30/06	E.E.	4/4/06
02			
03			
04			
05			
06			

CANES  
Cantex Homes  
DC Metro Division-Maryland Operations  
2124 Priest Branch Drive  
Gaithersburg, MD 20877-1404

APPLICANTS  
Accokeek Brandywine Invest. One & Two  
2124 Priest Branch Drive  
Crofton, MD 21114

and  
Cantex Homes  
15800 Golden Drive  
Gaithersburg, MD 20877-1404

M-NCPPC APPROVALS			
PROJECT NAME: LAKEVIEW AT BRANDYWINE			
PROJECT NUMBER: DSP-05046			
For Conditions of Approval see Site Plan Cover Sheet or Approval Sheet Revisions Listed Below Apply to This Sheet			
Approval or Revision #	Approval Date	Reviewer's Initials	Certification Date
01	3/30/06	E.E.	4/4/06
02			
03			
04			
05			
06			

DSP-05046



