

VICINITY MAP  
SCALE 1"=2,000'  
COPYRIGHT ADC THE MAP PEOPLE  
PERMITTED USE NUMBER 20711184

OUTFALL 60 RESTORATION  
TYPE 2 TREE CONSERVATION PLAN -- TCP2

ANACOSTIA RIVER WATERSHED  
Prince George's County, Maryland  
WSSI Project Number: MD1487.01

Copyright © 2019 Wetland Studies and Solutions, Inc.

REVISIONS				DATE: October 2018		SCALE: 1" = 20'
No.	Date	Description	Rev. By	App. By		

**LEGEND**

- SB REGULATED STREAM BUFFER (60')
- PMA PRIMARY MANAGEMENT AREA (PMA)
- WB 25' WETLAND BUFFER
- LOD EXISTING TREELINE
- T.O.B. SITE BOUNDARY (PROJECT LOD)
- T.O.B. REGULATED STREAM - TOP OF BANK
- T.O.B. REGULATED STREAM - CENTERLINE
- FP 100 YEAR FLOODPLAIN
- t101 EXISTING SPECIMEN TREE WITH CRITICAL ROOT ZONE
- ✕ EXISTING SPECIMEN TREE FOR REMOVAL WITH CRITICAL ROOT ZONE
- SPECIMEN TREE SIGNAGE
- TPF PROPOSED TREE PROTECTION FENCE (SEE DETAIL & SPECIFICATIONS)
- RP PROPOSED ROOT PRUNING (SEE DETAIL & SPECIFICATIONS)

**EROSION/SEDIMENT CONTROL LEGEND**

TITLE	SYMBOL	TITLE	SYMBOL
SANDBAG DIKE	○○○	SILT FENCE WITH WIRE SUPPORT (SUPER SILT FENCE)	—SSF—
WASH RACK	MR	FILTER BAG	☒FB
TEMP. STABILIZER CONSTRUCTION ENTRANCE	SCE	DEWATERING PUMP	(P)
SILT FENCE ON PAVEMENT	—SFOP—		

**EROSION & SEDIMENT LEGEND**

- PROPOSED BANKFULL BENCH
- PROPOSED BANKFULL
- TEMPORARY ACCESS PATH
- STOCKPILE AREA

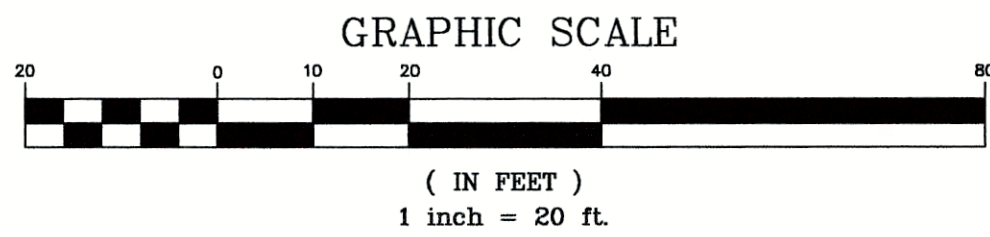
Prince George's County Planning Department, MNCPPC  
Environmental Planning Section  
**TREE CONSERVATION PLAN APPROVAL**  
TCP2-167-90-01

Approved by	Date	DRD #	Reason for Revision
00 John Markovich	9/24/1990	N/A	N/A
01 [Signature]	4/25/2019	N/A	
02			
03			
04			
05			
06			

**QUALIFIED PROFESSIONAL CERTIFICATION**  
THIS PLAN COMPLIES WITH THE CURRENT REQUIREMENTS OF PRINCE GEORGE'S CODE AND THE ENVIRONMENTAL TECHNICAL MANUAL.  
SIGNED: Michael J. Klebasko DATE: 4-3-19  
**MICHAEL J. KLEBASKO**  
WETLAND STUDIES AND SOLUTIONS, INC.  
1131 BENFIELD BOULEVARD, SUITE L  
MILLERSVILLE, MD 21108  
PH: (410) 672-5990 FAX: (410) 672-5993  
E-MAIL: MKLEBASKO@WETLANDS.COM

**NOTE:**  
BEARINGS AND DISTANCES ARE DERIVED FROM PUBLICLY-AVAILABLE PLATS, AND DO NOT REPRESENT A LAND SURVEY.

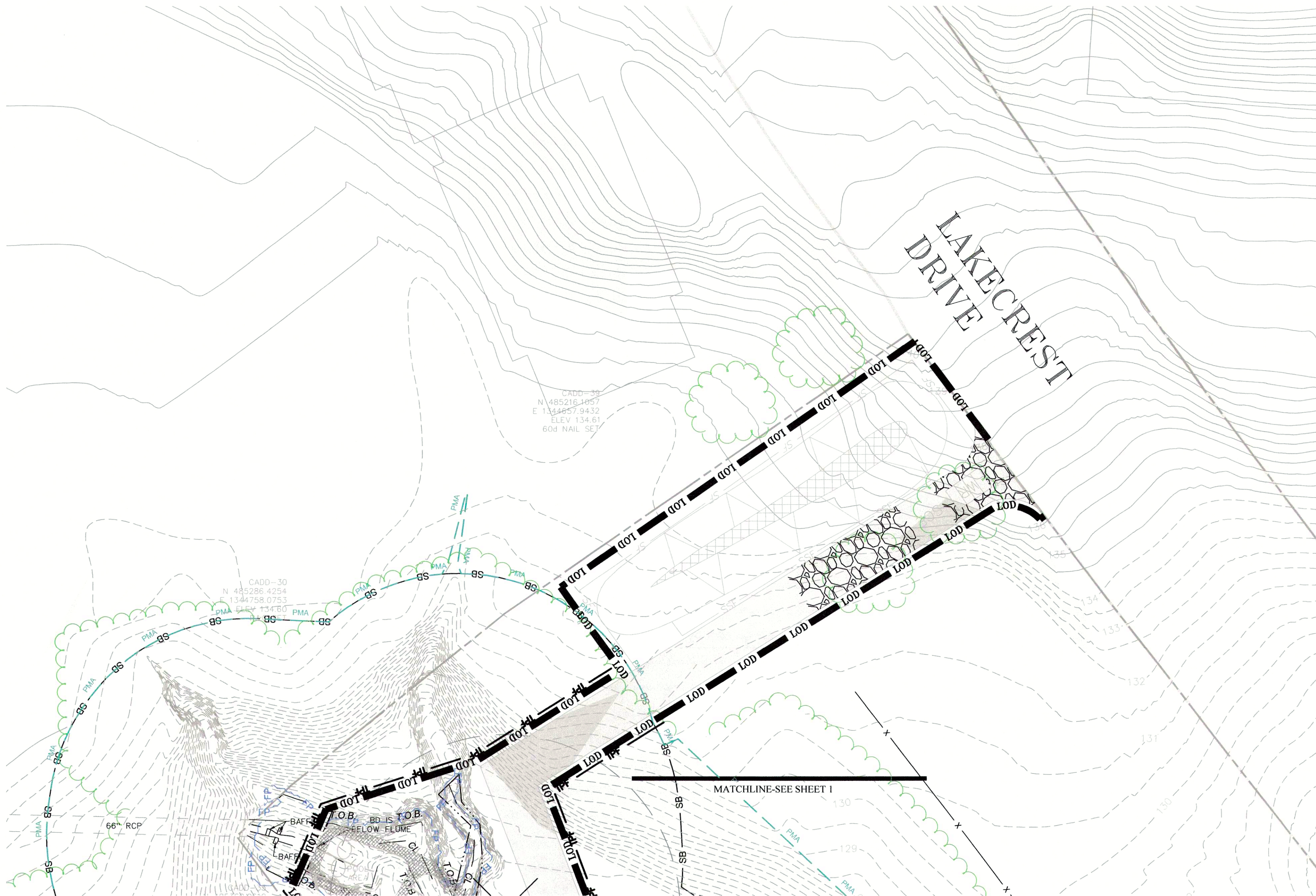




General Information Table		
Layer Category	Layer Name	Value
Zone	Zoning (Zone)	O-S
Zone	Aviation Policy Area (APA)	N/A
Administrative	Tax Grid (TMG)	167-C4
Administrative	WSSC Grid (Sheet 20)	222SE12
Administrative	Policy Analysis Zone (PAZ)	N/A
Administrative	Planning Area (Plan Area)	86b
Administrative	Election District (ED)	8
Administrative	Councilmanic District (CD)	9
Administrative	General Plan 2002 Tier (Tier)	Rural
Administrative	Traffic Analysis Zone (COG) (TAZ-COG)	1303
Administrative	PG Traffic Analysis Zone (TAZ-PG)	2750

SPECIMEN TREE TABLE						
No.	Common Name	Scientific Name	DBH (inches)	Condition Rating	Comments	Post-Construction Disposition
820	Yellow Poplar	<i>Liriodendron tulipifera</i>	35	Excellent	Vine cover, few dead scaffold branches, crown dieback	Removed
821	Yellow Poplar	<i>Liriodendron tulipifera</i>	33	Good	Tree on streambank, crooked bole, compressed scaffold branches, thin crown and crown dieback	Removed
822	Red Maple	<i>Acer rubrum</i>	32	Fair	Tree on streambank, heavy vine cover, compressed crown, crown dieback	Removed
823	Yellow Poplar	<i>Liriodendron tulipifera</i>	33	Fair	Roots on stream bank, slightly crooked trunk, compressed crown/scaffold branches, crown dieback	Removed
824	Yellow Poplar	<i>Liriodendron tulipifera</i>	39	Excellent	Crown dieback	Removed
825	White Oak	<i>Quercus alba</i>	30	Excellent	Lower trunk injury, crown dieback	Retained
826	Yellow Poplar	<i>Liriodendron tulipifera</i>	32	Fair	Lower trunk injury healed over, slight trunk lean, co-dominant leader, compressed crown, crown dieback	Retained
827	Yellow Poplar	<i>Liriodendron tulipifera</i>	32	Good	Tree on streambank, compressed crown, crown dieback	Removed
828	Yellow Poplar	<i>Liriodendron tulipifera</i>	31	Fair	Tree on steep streambank, compressed canopy	Removed
829	Yellow Poplar	<i>Liriodendron tulipifera</i>	30	Fair	Tree located on private property	Retained
830	Yellow Poplar	<i>Liriodendron tulipifera</i>	32	Excellent	Thin crown, compressed canopy, crown dieback	Retained

NOTE: All specimen trees were survey located.



Woodland Conservation Worksheet  
for Governmental and Linear Projects in Prince George's County

**SECTION 1-Establishing Site Information**

Property Description or Name: Outfall 60

Project Location: TCP2-167-90-01

Project Number: NRI-136-2018

Zone: O-S

Gross Tract: 0.77 acres

Project Area/Limits: 0.77 acres

**SECTION 2-Determining Requirements**

Existing Woodland in Project Limits = WCT 0.81 or 79.22%

Woodland Cleared in Project Limits 0.81

Total area of woodland cleared (subject to 1:1 replacement) 0.81

Off-site Woodland Conservation Provided (afforestation) 0.00

Off-site Woodland Conservation Provided (preservation) 0.00

Woodland Conservation Requirement: 0.81 acres

**SECTION 3-Meeting the Requirements**

Woodland Preserved 0.00

Afforestation /Reforestation 0.00

Natural Regeneration 0.00

Landscape Credit 0.00

Specimen/Historic Tree Credit (CRZ area \*2.0) 0.00

Forest Enhancement Credit (Area \*.25) 0.00

Street Tree Credit (Existing or 10-year canopy coverage) 0.00

Prior Credit for Off-site Woodland Conservation 0.00

Current Credit for Off-site Woodland Conservation 0.00

Off-site Woodland Conservation provided (afforestation) 0.00

Off-site Woodland Conservation provided (preservation) 0.00

Area Approved for Fee-in-lieu/PFA 0.81 Fee amount: \$8,104.34

Area Approved for Fee-in-lieu/non-PFA 0.00 Fee amount: \$0.00

Woodland Conservation Provided 0.81 acres

Bond amount: \$ -

Prepared by: Michael J. Klew Signed Date: 4-3-19

Prince George's County Planning Department, MNCPPC Environmental Planning Section TREE CONSERVATION PLAN APPROVAL TCP2-167-90-01			
Approved by	Date	DRD #	Reason for Revision
00 John Markovich	9/24/1990	N/A	N/A
01 <u>Mark Juba</u>	4/25/2019	N/A	
02			
03			
04			
05			
06			

**QUALIFIED PROFESSIONAL CERTIFICATION**  
THIS PLAN COMPLIES WITH THE CURRENT REQUIREMENTS OF PRINCE GEORGE'S CODE AND THE ENVIRONMENTAL TECHNICAL MANUAL.

SIGNED: Michael J. Klew DATE: 4-3-19

**MICHAEL J. KLEBASKO**  
WETLAND STUDIES AND SOLUTIONS, INC.  
1131 BENFIELD BOULEVARD, SUITE L  
MILLERSVILLE, MD 21108  
PH:(410) 672-5990 FAX:(410) 672-5993  
E-MAIL: MKLEBASKO@WETLANDS.COM

OUTFALL 60 RESTORATION  
TYPE 2 TREE CONSERVATION PLAN -- TCP2

ANACOSTIA RIVER WATERSHED

Prince George's County, Maryland

WSSI Project Number: MD1487.01

REVISIONS

No.	Date	Description	Rev. By	App. By

DATE: October 2018

SCALE: 1" = 20'

Horizontal Datum:

Vertical Datum:

Boundary and Top Source:  
SHELADIA ASSOCIATES  
PG ATLAS DIGITAL DATA

Design	Draft	Approved
BB	BB	MK

Sheet #

TCP2-3

Computer File Name:  
L:\Maryland\Projects\W0001000a\W001400\W01487.01\CADD\05-ENVR\Outfall 60\TCP\W01487\_TCP\_60\_revisions April 2019.dwg

**Wetland**  
Studies and Solutions, Inc.  
a **DAVEY** company

1131 Benfield Boulevard • Suite L  
Millersville, Maryland 21108  
Phone: 410-672-5990 • Fax: 410-672-5993  
www.wetlands.com

Copyright © 2019 Wetland Studies and Solutions, Inc.