

PRINCE GEORGE'S COUNTY

9400 PEPPERCORN PLACE
SUITE 600
LANDOVER, MARYLAND

PATUXENT ESTUARY DEMONSTRATION PROJECT KETTERING COMMUNITY ENVIRONMENTAL ENHANCEMENT PROGRAM C.I.P. NO. DV541475

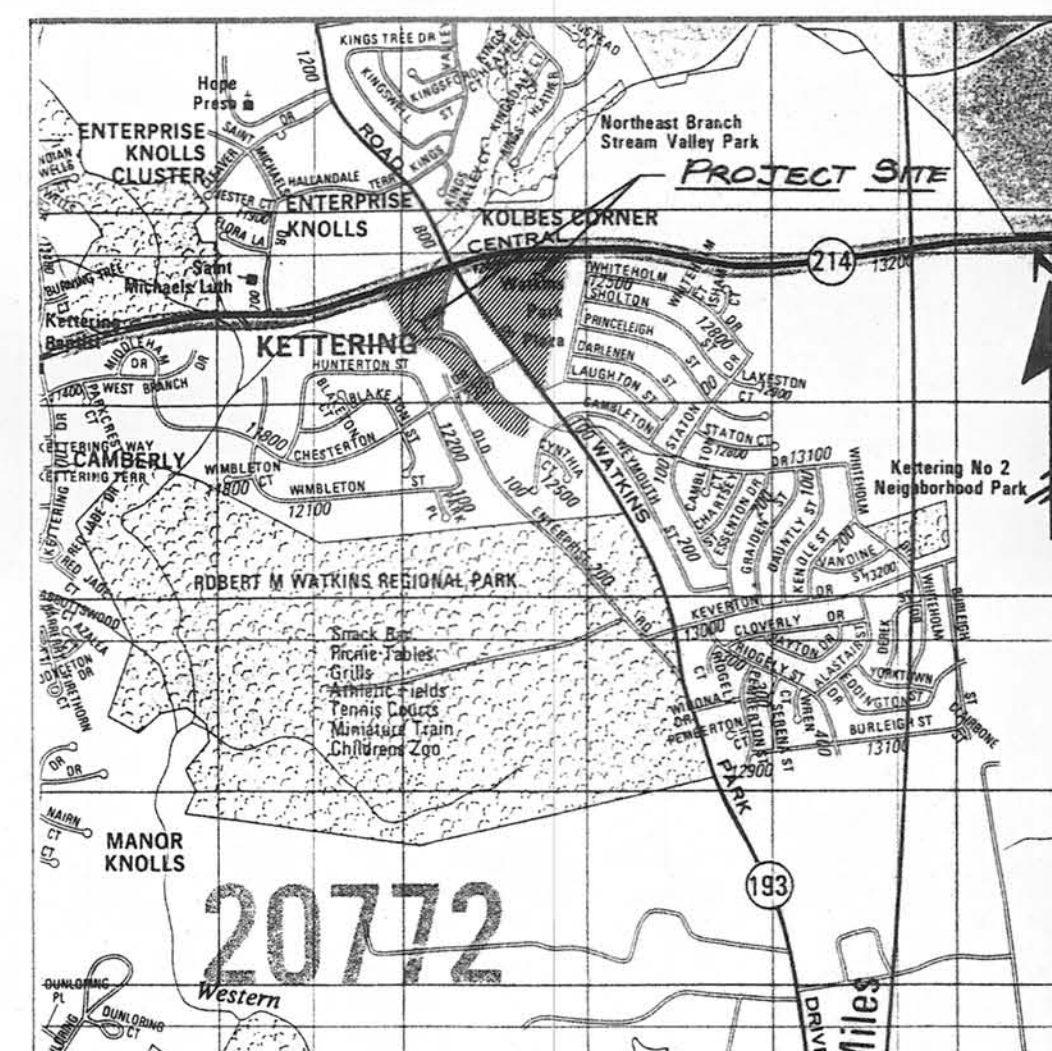
SHEET INDEX

SHEET NO.	TITLE
1	TITLE SHEET.
2	GENERAL NOTES, TRAVERSE DATUM, KEY PLAN AND MISCELLANEOUS DETAILS.
3	WETLAND MARSH WITH EXTENDED DETENTION PLAN AND EROSION AND SEDIMENT CONTROL PLAN.
4	STREAMBED RE-ESTABLISHMENT PLAN AND EROSION AND SEDIMENT CONTROL PLAN.
5	CHANNEL BED RE-ESTABLISHMENT PLAN AND PROFILE (STATION 0+00 - 7+50)
6	CHANNEL BED RE-ESTABLISHMENT PLAN AND PROFILE (STATION 7+50 - TWIN 78 RCP)
7	BIORETENTION AREA DRAINAGE AREA MAP
8	BIORETENTION AREA PLAN VIEWS AND SEDIMENT & EROSION CONTROL PLAN
9	BIORETENTION AREA PLAN VIEWS AND SEDIMENT & EROSION CONTROL PLAN
10	BIORETENTION AREA PLAN VIEWS AND SECTION DETAILS.
11	BIORETENTION DETAILS.
12	MISCELLANEOUS DETAILS.
13	MISCELLANEOUS SECTIONS AND PROFILES.
14	EROSION AND SEDIMENT CONTROL NOTES AND DETAILS.
15	PLANTING PLAN FOR BIORETENTION AREAS.
16	PLANTING PLAN FOR BIORETENTION AREAS.
17	PLANTING PLAN FOR BIORETENTION AREAS.
18	PLANTING PLAN FOR WETLAND / STREAMBED RE-ESTABLISHMENT AREAS.
19	PLANTING PLAN FOR CHANNEL REFORESTATION.
20	PLANTING PLAN FOR WETLAND MARSH WITH EXTENDED DETENTION.
21	PLANTING DETAILS SCHEDULES AND NOTES.

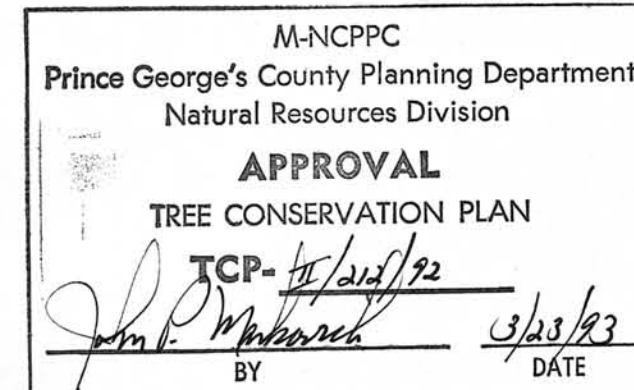
RIGHT-OF-WAY LINES SHOWN ON THESE PLANS DO NOT INCLUDE EASEMENTS, THEY ARE FOR ASSISTANCE IN INTERPRETING THE PLANS, THEY ARE NOT OFFICIAL. FOR OFFICIAL FEE RIGHT-OF-WAY AND EASEMENT INFORMATION SEE APPROPRIATE RIGHT-OF-WAY PLAT OR PLATS.

CERTIFICATE OF COMPLIANCE - I HEREBY CERTIFY THAT THE GRADING SHOWN HEREON CONFORMS WITH SUBTITLE FOUR, DIVISION THREE OF THE PRINCE GEORGE'S COUNTY BUILDING CODE.

THE LOCATION OF EXISTING UTILITIES SHOWN ON THE PLANS ARE FOR INFORMATION AND GUIDANCE PURPOSES ONLY. NO GUARANTEE IS MADE AS TO THE ACCURACY OF SAID LOCATION. CONTRACTORS SHALL NOTIFY "MISS UTILITY" TELEPHONE NUMBER 1-800-257-7777 FOR UTILITY LOCATIONS AT LEAST 48 HOURS PRIOR TO BEGINNING CONSTRUCTION.



VICINITY MAP
SCALE: 1" = 2000'
PG CO. MAP 16, GRID C-4



CERTIFICATE OF COMPLIANCE

I CERTIFY THAT THESE PLANS REPRESENT A PRACTICABLE AND WORKABLE PLAN BASED ON MY PERSONAL KNOWLEDGE OF THE SITE AND THIS PLAN WAS PREPARED IN ACCORDANCE WITH THE REQUIREMENTS OF THE PRINCE GEORGE'S COUNTY WPB DESIGN MANUAL AND STANDARD SPECIFICATIONS, AND OTHER JURISDICTIONAL FEDERAL AND STATE PERMITS.

SIGNATURE: David B. Ennis, PE MD. LICENSE NO. 15224 DATE: 2-1-93

NAME: DAVID B. ENNIS, PE.

ENGINEERING TECHNOLOGIES ASSOCIATES, INC.
ENGINEERS * PLANNERS * SURVEYORS
3458 ELLICOTT CENTER DRIVE SUITE #101
ELLICOTT CITY, MARYLAND 21043
PHONE: (410) 461-9910



THE PRINCE GEORGE'S COUNTY GOVERNMENT
DEPARTMENT OF ENVIRONMENTAL RESOURCES
WATERSHED PROTECTION BRANCH
CONCEPT SECTION
INGLEWOOD III OFFICE BUILDING
9400 PEPPERCORN PLACE, SIXTH FLOOR
LANDOVER, MARYLAND 20785
(301) 925-5921

STORMWATER MANAGEMENT CONCEPT APPROVAL

APPROVAL NO. 938003760
Development Name: Kettering Community Environmental Program - Patuxent Estuary Demonstration Program
Applicant's Name: Prince George's County Government
Engineer/Architect/Surveyor: Engineering Technologies Associates, Inc.

- REQUIREMENTS:
- ☐ Public storm drainage/stormwater management construction
 - ☐ Private storm drainage/stormwater management construction
 - ☐ Watershed Protection Branch (WPB) design approval
 - ☐ Surface drainage/floodplain easement
 - ☐ Infiltration
 - ☐ 2-10 year attenuation
 - ☐ 100 year attenuation
 - ☒ Other see condition #1 below
 - ☐ Stormwater management fee payment of \$ NONE in lieu of providing on-site attenuation/quality control measures.

Conditions of Approval:
The purpose of this project is to construct a wetland marsh with extended detention and for streambed re-establishment.

Approved by: Richard Thompson
Approval date: 10-27-92
Expiration date: 10-27-95

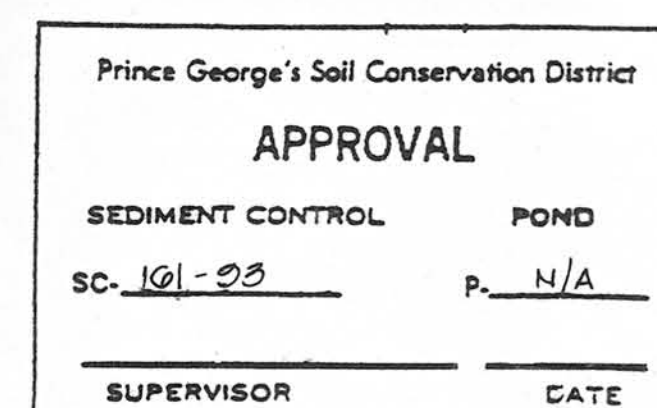
FOR OFFICE USE ONLY
Page & Location: 16, C4 200' 201N11
Sheet Name: WATKINS PARK DRIVE
Branch: 20 Number of DUs: 0
CR: 23S
Lot & Block:

PINK - Applicant
YELLOW - Submit w/SCD Sediment Control Application
WHITE - Watershed Protection Branch
GOLD - Submit w/Building Permit Application
P.G.C. Form #3693 (Rev. 11/91)

OWNER'S / DEVELOPERS CERTIFICATION

"I/WE HEREBY CERTIFY THAT I HAVE REVIEWED THIS EROSION AND SEDIMENT CONTROL PLAN AND THAT ALL CLEARING, GRADING, CONSTRUCTION AND OR DEVELOPMENT WILL BE DONE PURSUANT TO THIS PLAN AND THAT ANY RESPONSIBLE PERSONNEL INVOLVED IN THE CONSTRUCTION PROJECT WILL HAVE A CERTIFICATE OF ATTENDANCE AT A DEPARTMENT OF NATURAL RESOURCES APPROVED TRAINING PROGRAM FOR THE CONTROL OF SEDIMENT AND EROSION BEFORE BEGINNING THE PROJECT.

SIGNATURE: St. Wild DATE: 3/8/93
NAME: STAN E. WILDESEN, PE TITLE: BRANCH MANAGER
PHONE NO.: (301) 925-5900



PRINCE GEORGE'S COUNTY
GOVERNMENT
9400 PEPPERCORN PLACE SUITE 600
LANDOVER, MARYLAND 20785

CONSULTANTS CERTIFICATE

"I CERTIFY THAT THIS PLAN OF EROSION AND SEDIMENT CONTROL REPRESENTS A PRACTICABLE AND WORKABLE PLAN BASED ON MY PERSONAL KNOWLEDGE OF THE SITE, AND THIS PLAN WAS PREPARED IN ACCORDANCE WITH THE REQUIREMENTS OF THE PRINCE GEORGE'S SOIL CONSERVATION DISTRICT AND STANDARDS AND SPECIFICATIONS FOR SOIL EROSION AND SEDIMENT CONTROL.

I HAVE REVIEWED THIS EROSION AND SEDIMENT CONTROL PLAN WITH THE OWNER AND OR DEVELOPER.

SIGNATURE: David B. Ennis MD. LICENSE NO. 15224 DATE: 2/1/93

NAME: DAVID B. ENNIS, PE.

ENGINEERING TECHNOLOGIES ASSOCIATES, INC.
ENGINEERS * PLANNERS * SURVEYORS
3458 ELLICOTT CENTER DRIVE SUITE #101
ELLICOTT CITY, MARYLAND 21043
PHONE: (410) 461-9910

TITLE SHEET

PATUXENT ESTUARY DEMONSTRATION PROJECT
KETTERING COMMUNITY
ENVIRONMENTAL ENHANCEMENT PROGRAM

Prepared by:
ENGINEERING TECHNOLOGIES
ASSOCIATES, INC.
3458 ELLICOTT CENTER DRIVE SUITE 101
ELLICOTT CITY, MARYLAND 21043
PHONE: (410) 461-9920

INSPECTION BY
DESIGNER: St. Wild DATE: 3/8/93
PROJECT NAME: KETTERING
PRINCE GEORGE'S COUNTY, MD
DEPARTMENT OF ENVIRONMENTAL RESOURCES
WATERSHED PROTECTION BRANCH
APPROVED FOR Stormwater Management
and Storm Drain Only
Public storm drain/SWM
system permits required
prior to construction.
Private storm drain/SWM
system. A recorded
maintenance agreement is
required.
Preconstruction meeting is
required for all DES
(inspected storm drain/SWM
systems. Call (301)952-4914
to arrange.
Revision
() Approval
Date
Description:

PERMIT REQUIREMENTS

CONCEPTUAL APPROVAL	15	REQ'D
FLOODPLAIN APPROVAL (WRA)	15	REQ'D
D.E.R. GRADING	15	REQ'D
PGSCD. SED. CONTROL	15	REQ'D
P.G. COUNTY DPW&T.	NOT	REQ'D
M.N.C.P. & P.C.	NOT	REQ'D
PUBLIC UTILITY (WSSC)	15	REQ'D
STATE HWY. ADM.	15	REQ'D
STATE BD. HEALTH	NOT	REQ'D
WRA. WATERWAY CONST.	15	REQ'D
WRA. DAM SAFETY	NOT	REQ'D
ARMY CORPS OF ENGR'S	15	REQ'D
MDE. WATER MANAGEMENT ADMINISTRATION	15	REQ'D
MDE WATER QUALITY PERMIT (401)	15	REQ'D
DNR (404)	15	REQ'D
WPB PERMIT	15	REQ'D

AS-BUILT DATA

CONTRACT NO.	
CONTRACTOR	
INSPECTOR	
DATE FINALED	
FINALED BY	

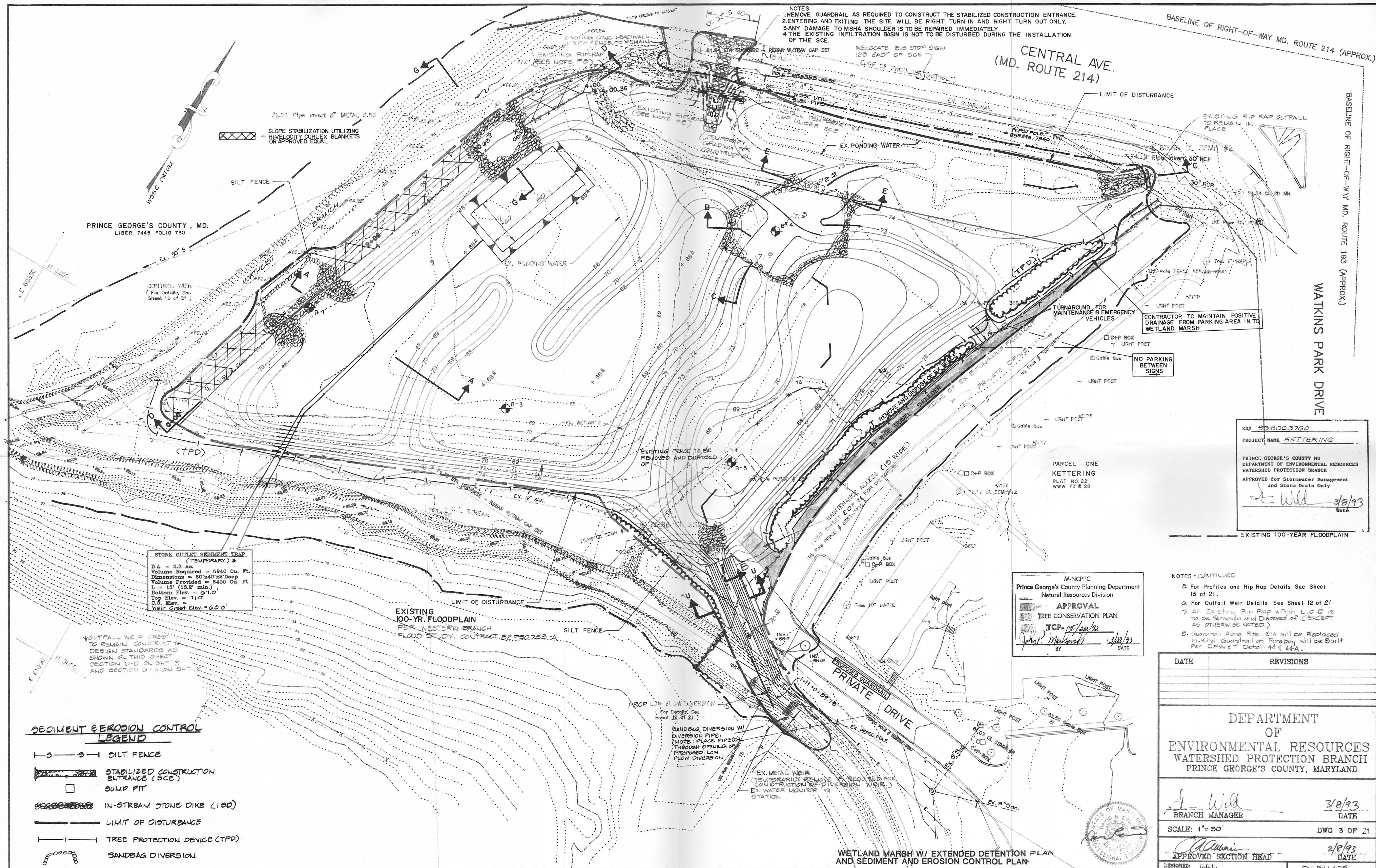
DATE	REVISIONS

DEPARTMENT
OF
ENVIRONMENTAL RESOURCES
WATERSHED PROTECTION BRANCH
PRINCE GEORGE'S COUNTY, MARYLAND

St. Wild 3/8/93
BRANCH MANAGER DATE
SCALE: As Shown DWG 1 OF 21
APPROVED SECTION HEAD St. Wild 3/8/93
DATE
DESIGNED: D.B.E.
DRAWN: S.G.P.
CHECKED BY: N.H.N.
PROJECT MANAGER Job No. 541475
C.I.P. NO. DV541475
CONTRACT NO.

DEPARTMENT OF ENVIRONMENTAL RESOURCES

WATERSHED PROTECTION BRANCH
PROJECT ADMINISTRATION SECTION



DEPARTMENT OF ENVIRONMENTAL RESOURCES

WATERSHED PROTECTION BRANCH
PROJECT ADMINISTRATION SECTION

PATUXENT ESTUARY DEMONSTRATION PROJECT
KETTERING COMMUNITY
ENVIRONMENTAL ENHANCEMENT PROGRAM

**ENGINEERING TECHNOLOGIES
ASSOCIATES, INC.**
ENGINEERS • PLANNERS • SURVEYORS
3458 ELLICOTT CENTER DRIVE SUITE 101
ELLICOTT CITY, MARYLAND 21045
(301) 481-1828

DEPARTMENT
OF
ENVIRONMENTAL RESOURCES
WATERSHED PROTECTION BRANCH
PRINCE GEORGE'S COUNTY, MARYLAND

L. Will
BRANCH MANAGER

3/8/93
DATE

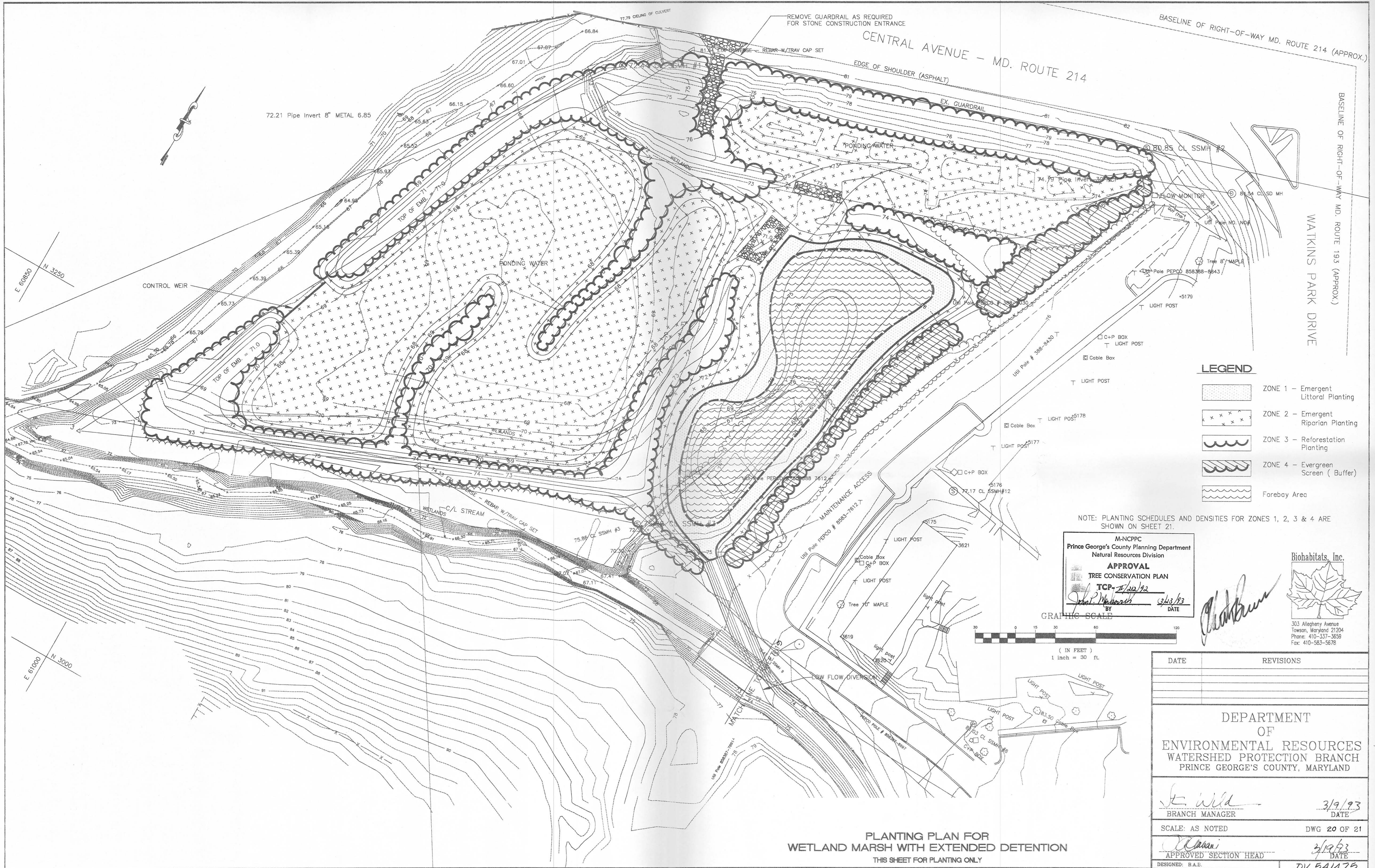
SCALE: 1" = 30' DWG 3 OF 21

APPROVED SECTION HEAD 2/8/93
DATE

DESIGNED: D.B.E.	DY. 541475 C.I.P. NO.
DRAWN: S.G.P.	
CHECKED BY: W.H.N.	

[Signature]
PROJECT MANAGER

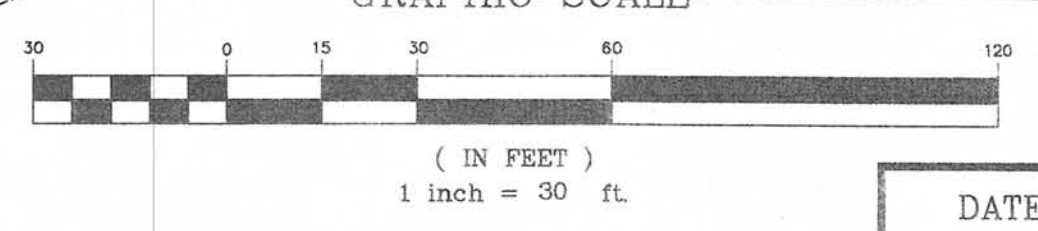
CONTRACT NO. _____



- LEGEND**
- ZONE 1 - Emergent Littoral Planting
 - ZONE 2 - Emergent Riparian Planting
 - ZONE 3 - Reforestation Planting
 - ZONE 4 - Evergreen Screen (Buffer)
 - Forebay Area

NOTE: PLANTING SCHEDULES AND DENSITIES FOR ZONES 1, 2, 3 & 4 ARE SHOWN ON SHEET 21.

M-NCPPC
Prince George's County Planning Department
Natural Resources Division
APPROVAL
TREE CONSERVATION PLAN
TCP-7/12/92
BY: [Signature]
DATE: 3/23/93



Biohabitats, Inc.
303 Allegheny Avenue
Towson, Maryland 21204
Phone: 410-337-3659
Fax: 410-583-5678

DATE	REVISIONS

DEPARTMENT OF ENVIRONMENTAL RESOURCES
WATERSHED PROTECTION BRANCH
PRINCE GEORGE'S COUNTY, MARYLAND

Branch Manager: [Signature]
DATE: 3/9/93

SCALE: AS NOTED DWG 20 OF 21

DESIGNED: B.A.E.
DRAWN: W.J.G.
CHECKED BY: J.K.B.

APPROVED SECTION HEAD: [Signature]
DATE: 3/19/93
PROJECT MANAGER: [Signature]
CONTRACT NO. DV 5414.75 C.I.P. NO.

PLANTING PLAN FOR
WETLAND MARSH WITH EXTENDED DETENTION
THIS SHEET FOR PLANTING ONLY

DEPARTMENT OF ENVIRONMENTAL RESOURCES

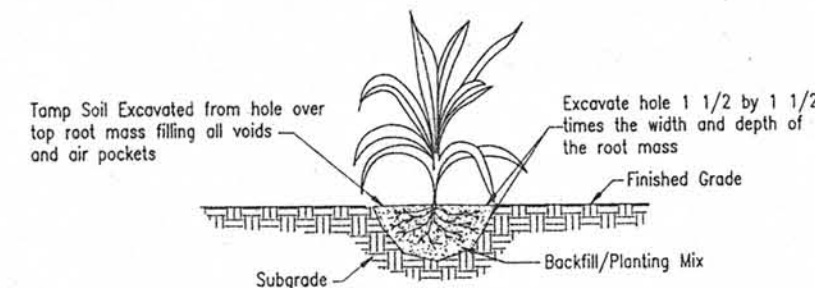
WATERSHED PROTECTION BRANCH
PROJECT ADMINISTRATION SECTION

PATUXENT ESTUARY DEMONSTRATION PROJECT
KETTERING COMMUNITY
ENVIRONMENTAL ENHANCEMENT PROGRAM

PLANTING DETAILS

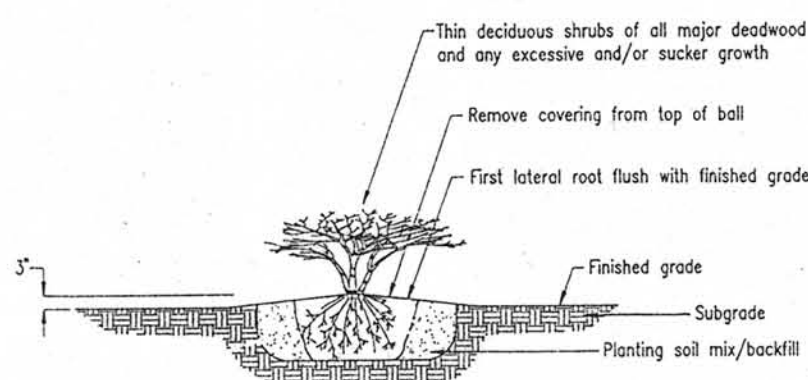
HERBACEOUS PLANTING DETAIL

Plan View Not To Scale



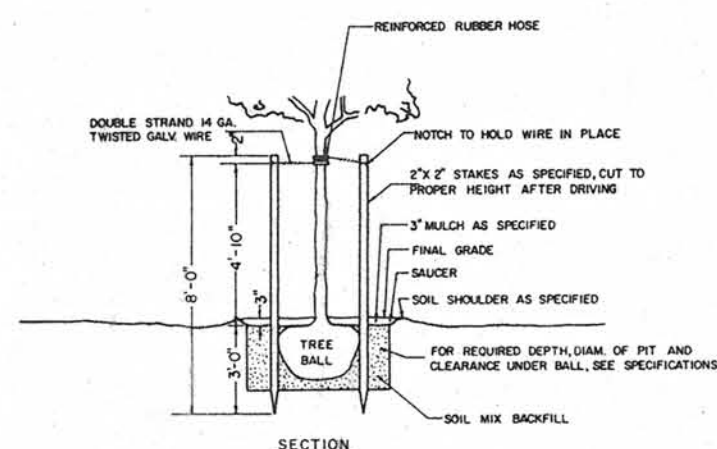
SHRUB PLANTING DETAIL

Bare Root Not To Scale



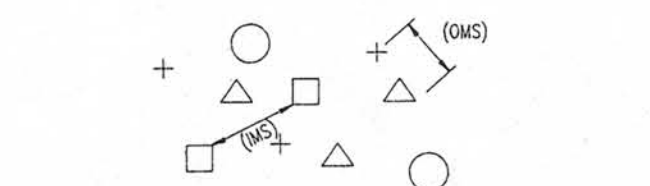
TREE PLANTING DETAIL - BALL & BURLAP

Not To Scale



PLANT SPACING DETAIL-RANDOM

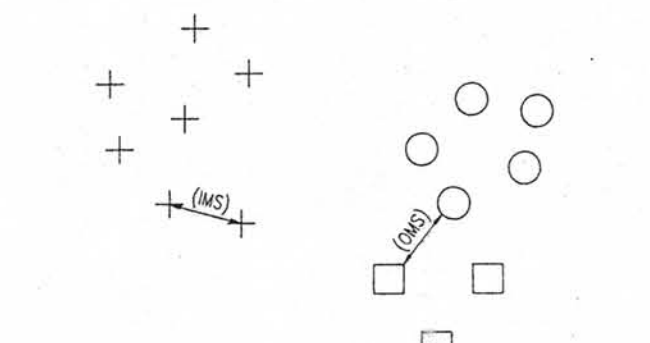
Plan View Not To Scale



1. An overall minimum spacing distance (OMS) is assigned to the planting configuration (see plant schedule).
2. An individual minimum spacing distance (IMS) is assigned to each individual species (see plant schedule).

PLANT SPACING DETAIL-CLUSTER

Plan View Not To Scale



1. Plants are arranged in clusters consisting of five some species.
2. Spacing between each cluster is determined by the overall minimum spacing distance (OMS).
3. Spacing between each species within each cluster is determined by the individual minimum spacing distance (IMS).
4. Clusters, whenever possible, shall consist of odd numbers with no less than 3 and no more than 11 individual species.

PLANTING SCHEDULES

BIORETENTION AREAS SEE SHEETS 19, 16, 17 FOR PLAN

PLANT SCHEDULE

Planting Area: Bioretention Area Zone: N/A Habitat: N/A Classification: N/A Size: 0.33 ac/ 14,417 sf

Ont	Botanical Name	Common Name	Unit	Size	Space Type	Overall Minimum Spacing (per acre)	Ind. Minimum Spacing (per acre)
Trees							
23	Acer rubrum	red maple	BB	2.5 cal.	See Plan	10'	N/A
11	Fraxinus americana	white ash	BB	2.5 cal.	See Plan	10'	N/A
8	Fraxinus pennsylvanica	green ash	BB	2.5 cal.	See Plan	10'	N/A
18	Liquidambar styraciflua	sweet gum	BB	2.5 cal.	See Plan	10'	N/A
8	Nyssa sylvatica	black gum	BB	2.5 cal.	See Plan	10'	N/A
16	Quercus palustris	pin oak	BB	2.5 cal.	See Plan	10'	N/A
13	Quercus phellos	willow oak	BB	2.5 cal.	See Plan	10'	N/A
16	Quercus rubra	red oak	BB	2.5 cal.	See Plan	10'	N/A

PLANT SCHEDULE

Planting Area: Bioretention Area Zone: N/A Habitat: N/A Classification: N/A Size: 0.33 ac/ 14,417 sf

Ont	Botanical Name	Common Name	Unit	Size	Space Type	Overall Minimum Spacing (per acre)	Ind. Minimum Spacing (per acre)
Shrubs							
9	Clethra alnifolia	sweet pepperbush	Con	3-4'	See Plan	4'	N/A
2	Cornus stolonifera	red osier dogwood	Con	3-4'	See Plan	4'	N/A
24	Hamelia virginica	witch hazel	Con	3-4'	See Plan	4'	N/A
34	Ilex glabra	inkberry	Con	3-4'	See Plan	4'	N/A
31	Ilex verticillata	winterberry	Con	3-4'	See Plan	4'	N/A
4	Juniperus communis 'compressa'	common juniper	Con	3-4'	See Plan	4'	N/A
36	Juniperus horizontalis 'Star Harbor'	creeping juniper	Con	3-4'	See Plan	4'	N/A
36	Lindera benzoin	spicebush	Con	3-4'	See Plan	4'	N/A
28	Myrica pennsylvanica	bayberry	Con	3-4'	See Plan	4'	N/A
21	Physocarpus opulifolius	minibush	Con	3-4'	See Plan	4'	N/A
65	Viburnum dentatum	arrowwood	Con	3-4'	See Plan	4'	N/A
23	Viburnum lentago	nannyberry	Con	3-4'	See Plan	4'	N/A

PLANT SCHEDULE

Planting Area: Bioretention Area Zone: N/A Habitat: N/A Classification: N/A Size: 0.33 ac/ 14,417 sf

Ont	Botanical Name	Common Name	Unit	Size	Space Type	Overall Minimum Spacing (per acre)	Ind. Minimum Spacing (per acre)
Herbaceous Vegetation							
3595	Vinca minor	periwinkle	EA	p.p.	RAN	2'	2'

N.I.C. WETLAND/STREAMBED REESTABLISHMENT AREAS SEE SHEET 18 FOR PLAN

PLANT SCHEDULE

Planting Area: Wetland/Streambed Reestablishment Area Zone: 1 Habitat: Riparian Classification: Emergent Size: 0.17 ac/ 7,427 sf

Ont	Botanical Name	Common Name	Unit	Size	Space Type	Overall Minimum Spacing (per acre)	Ind. Minimum Spacing (per acre)
Herbaceous Vegetation							
261	Asclepias incarnata	swamp milkweed	EA	p.p.	RAN	3'	5'
261	Carex stricta	tussock sedge	EA	p.p.	RAN	3'	5'
697	Juncea effusa	soft rush	EA	p.p.	RAN	3'	5'
174	Lobelia cardinalis	cardinal flower	EA	p.p.	RAN	3'	5'
348	Scirpus cyperinus	woolgrass	EA	p.p.	RAN	3'	5'
110	Agrostis alba	repp	LBS	Seed	N/A	N/A	N/A
0.125	Carex crinita	fringed sedge	LBS	Seed	N/A	N/A	N/A

NOTES: All plants shall be wet cultured. Seed shall be a minimum of 72% PLS.

PLANT SCHEDULE

Planting Area: Wetland/Streambed Reestablishment Area Zone: 2 Habitat: Riparian Classification: Scrub/Shrub Size: 0.32 ac/ 14,117 sf

Ont	Botanical Name	Common Name	Unit	Size	Space Type	Overall Minimum Spacing (per acre)	Ind. Minimum Spacing (per acre)
Shrubs							
36	Aronia arbutifolia	red chokeberry	Con	3-4'	RAN	8'	20'
36	Cephalanthus occidentalis	buttonbush	Con	3-4'	RAN	8'	20'
36	Cornus amomum	silly dogwood	Con	3-4'	RAN	8'	20'
36	Ilex verticillata	winterberry	Con	3-4'	RAN	8'	20'
36	Sambucus canadensis	common elder	Con	3-4'	RAN	8'	20'
36	Viburnum dentatum	arrowwood	Con	3-4'	RAN	8'	20'

NOTE: All plants shall be wet cultured.

PLANT SCHEDULE

Planting Area: Wetland/Streambed Reestablishment Area Zone: 3 Habitat: Upland Classification: Scrub/Shrub Size: 0.17 ac/ 7,388 sf

Ont	Botanical Name	Common Name	Unit	Size	Space Type	Overall Minimum Spacing (per acre)	Ind. Minimum Spacing (per acre)
Shrubs							
19	Ceanothus americanus	New Jersey tea	Con	3-4'	RAN	8'	20'
19	Hamelia virginiana	witch hazel	Con	3-4'	RAN	8'	20'
19	Kalmia latifolia	mountain laurel	Con	3-4'	RAN	8'	20'
19	Lindera benzoin	spicebush	Con	3-4'	RAN	8'	20'
19	Rhododendron nudiflorum	pink azalea	Con	3-4'	RAN	8'	20'
19	Viburnum dentatum	arrowwood	Con	3-4'	RAN	8'	20'

PLANT SCHEDULE LEGEND:

BB - Balled & Burlap
LBS - pounds
PLS - Pure live seed minimum
p.p. - 2 - 2 1/4 peat pots
cal. - caliper

Con - Container
EA - Each
CLR - Cluster
RAN - Random

CHANNEL REFORESTATION AREAS SEE SHEET 19 FOR PLAN

PLANT SCHEDULE

Planting Area: Channel Reforestation Area Zone: 1 Habitat: Upland Classification: Mesic Size: 0.80 ac/ 34,945 sf

Ont	Botanical Name	Common Name	Unit	Size	Space Type	Overall Minimum Spacing (per acre)	Ind. Minimum Spacing (per acre)
Trees							
28	Ametanther canadensis	shadbush	BB	1.0 cal.	RAN	12'	27'
28	Carpinus caroliniana	horned	BB	1.0 cal.	RAN	12'	27'
28	Cercis canadensis	red bud	BB	1.0 cal.	RAN	12'	27'
28	Chionanthus virginicus	fringe tree	BB	1.0 cal.	RAN	12'	27'
28	Cornus florida	flowering dogwood	BB	1.0 cal.	RAN	12'	27'
Shrubs							
29	Aronia arbutifolia	red chokeberry	Con	3-4'	RAN	8'	27'
29	Hamelia virginiana	witch hazel	Con	3-4'	RAN	8'	27'
29	Ilex verticillata	winterberry	Con	3-4'	RAN	8'	27'
29	Kalmia latifolia	mountain laurel	Con	3-4'	RAN	8'	27'
29	Lindera benzoin	spicebush	Con	3-4'	RAN	8'	27'
28	Physocarpus opulifolius	minibush	Con	3-4'	RAN	8'	27'
28	Vaccinium corymbosum	highbush blueberry	Con	3-4'	RAN	8'	27'
28	Vaccinium clammeum	hill gooseberry	Con	3-4'	RAN	8'	27'
28	Viburnum cassinoides	wild raisin	Con	3-4'	RAN	8'	27'
28	Viburnum dentatum	arrowwood	Con	3-4'	RAN	8'	27'
28	Viburnum lentago	nannyberry	Con	3-4'	RAN	8'	27'

PLANT SCHEDULE

Planting Area: Channel Reforestation Area Zone: 2 Habitat: Upland Classification: Mesic Size: 0.34 ac/ 14,693 sf

Ont	Botanical Name	Common Name	Unit	Size	Space Type	Overall Minimum Spacing (per acre)	Ind. Minimum Spacing (per acre)
Shrubs							
69	Cornus amomum	silly dogwood	Con	3-4'	RAN	6'	15'
69	Cornus stolonifera	red osier dogwood	Con	3-4'	RAN	6'	15'
69	Ilex verticillata	winterberry	Con	3-4'	RAN	6'	15'
69	Lindera benzoin	spicebush	Con	3-4'	RAN	6'	15'
65	Viburnum dentatum	arrowwood	Con	3-4'	RAN	6'	15'
65	Viburnum lentago	nannyberry	Con	3-4'	RAN	6'	15'

WETLAND MARSH WITH EXTENDED DETENTION SEE SHEET 20 FOR PLAN

PLANT SCHEDULE

Planting Area: Wetland Marsh with Extended Detention Zone: 1 Habitat: Littoral Zone Classification: Emergent Size: 0.17 ac/ 7,427 sf

Ont	Botanical Name	Common Name	Unit	Size	Space Type	Overall Minimum Spacing (per acre)	Ind. Minimum Spacing (per acre)
Herbaceous Vegetation							
370	Inf. versicolor	blueflag	EA	p.p.	CLR	2'	4'
247	Potamogeton amplifolius	arrow arum	EA	p.p.	RAN	3'	5'
247	Scirpus americanus	duck potato	EA	p.p.	RAN	3'	5'
82	Scirpus americanus	common three-square	EA	p.p.	RAN	3'	10'
82	Scirpus validus	great bulrush	EA	p.p.	RAN	3'	10'

NOTES: All plants shall be wet cultured. CLR plants shall be randomly spaced, 7 per CLR.

PLANT SCHEDULE

Planting Area: Wetland Marsh with Extended Detention Zone: 2 Habitat: Riparian Classification: Emergent Size: 1.86 ac/ 81,098 sf

Ont	Botanical Name	Common Name	Unit	Size	Space Type	Overall Minimum Spacing (per acre)	Ind. Minimum Spacing (per acre)
Herbaceous Vegetation							
56.0	Agrostis alba	red top	LBS	Seed	N/A	N/A	N/A
4.1	Bitens cernua	nodding beggar-ticks	LBS	Seed	N/A	N/A	N/A
2.7	Carex crinita	fringed sedge	LBS	Seed	N/A	N/A	N/A
2.7	Carex stricta	tussock sedge	LBS	Seed	N/A	N/A	N/A
6.2	Cephalanthus occidentalis	buttonbush	LBS	Seed	N/A	N/A	N/A
4.1	Eupatorium perfoliatum	boneset	LBS	Seed	N/A	N/A	N/A
4.1	Verbena hastata	blue vervain	LBS	Seed	N/A	N/A	N/A

NOTES: All plants shall be wet cultured. Seed shall be a minimum of 72% PLS.

PLANT SCHEDULE

Planting Area: Wetland Marsh with Extended Detention Zone: 3 Habitat: Riparian Classification: Forested Size: 1.05 ac/ 45,680 sf

Ont	Botanical Name	Common Name	Unit	Size	Space Type	Overall Minimum Spacing (per acre)	Ind. Minimum Spacing (per acre)
Trees							
80	Acer rubrum	red maple	BB	2.5 cal.	RAN	12'	24'
48	Betula nipa	river birch	BB	2.5 cal.	RAN	12'	24'
64	Fraxinus pennsylvanica	green ash	BB	2.5 cal.	RAN	12'	27'
32	Liquidambar styraciflua	sweet gum	BB	2.5 cal.	RAN	12'	38'
32	Nyssa sylvatica	black gum	BB	2.5 cal.	RAN	12'	38'
32	Platanus occidentalis	American sycamore	BB	2.5 cal.	RAN	12'	38'
32	Quercus alata	pin oak	BB	2.5 cal.	RAN	12'	38'
Shrubs							
92	Cornus amomum	silly dogwood	Con	3-4'	RAN	10'	22'
114	Ilex verticillata	winterberry	Con	3-4'	RAN	10'	20'
46	Sambucus canadensis	common elder	Con	3-4'	RAN	10'	20'
92	Viburnum dentatum	arrowwood	Con	3-4'	RAN	10'	22'

NOTE: All plants shall be wet cultured.

PLANT SCHEDULE

Planting Area: Wetland Marsh with Extended Detention Zone: 4 Habitat: Riparian Classification: Forested Size: 0.15 ac/ 6,385 sf

Ont	Botanical Name	Common Name	Unit	Size	Space Type	Overall Minimum Spacing (per acre)	Ind. Minimum Spacing (per acre)
Trees							
7	Cercis canadensis	red bud	BB	1.0 cal.	RAN	10'	31'
7	Cornus florida	flowering dogwood	BB	1.0 cal.	RAN	10'	31'
51	Cupressocypripis x leylandii	Leyland cypress	BB	6" - 8"	RAN	10'	11'

GENERAL NOTES

1. All operations pertinent to the soil preparation, planting and seeding of the areas within and adjacent to the basin shall be accomplished in accordance with the plan and specifications.
2. Planting and seeding operations shall follow final grading and necessary soil preparation in successive order as nearly as possible pending critical seasons for planting and seeding and weather conditions.
3. The Contractor shall notify MISS UTILITY (1-800-257-7777) and the local county jurisdictions at least 72 hours (three full working days) in advance of beginning any work pertinent to planting or seeding, for verification of the depth and horizontal location of all underground utilities within the limits of work.
4. The Contractor shall verify the quantities of plant materials shown on the plan and plant list and shall be prepared to furnish the quantities as shown. No changes in plant material, quantity, quality, variety or size shall be made without the permission of the Prince Georges County Watershed Protection Branch.
5. Should the Contractor discover any discrepancies or have any questions concerning data on the drawings, he shall contact the Prince George's County representative at (301) 451-9920 immediately prior to beginning or continuing any work and shall not proceed any further until the particular item is clarified.

WOODLAND CONSERVATION NOTES

1. ON TAX MAP 68, PARCEL 66 (PEPCO R/W) AND PLATS 7595 AND 7597 (KETTERING CONDOMINIUM PLATS) ARE EXEMPT FROM THE TREE CONSERVATION BECAUSE THERE ARE NO TREES PRESENT.
2. ALL TREES TO BE REMOVED ARE IN THE 100 YEAR FLOOD PLAIN AND WILL BE REPLACED ON AN ACRE TO ACRE BASIS.
3. FOR THIS PROJECT, GROSS TRACT AREA IS EQUAL TO THE LIMIT OF DISTURBANCE.

GROSS TRACT AREA = 6.2 AC.
WOODLAND CLEARED = 0.36 AC. (ALL IN FLOOD PLAIN)
REFORESTATION = 2.04 AC. (IN FLOOD PLAIN)